

INTERIM



Quality Indicators

Annual Report

01 January 2024 - 31 December 2024

Real-Time Database

PUBLISHED 3 March 2025

The release of the Quality Indicator report is now an ANZDATA/ANZSN co-badged report. This information is provided as it is reported to ANZDATA. The reporting arrangements provide additional information to units on quality indicators. Units should use these data to monitor clinical practice and outcomes.

Suggested Citation

ANZDATA Registry. 2024 Quality Indicators Annual Report - Real-Time Database. Australia and New Zealand Dialysis and Transplant Registry, Adelaide, Australia. 2025. Available at: <http://www.anzdata.org.au>

Note on Reports from the Real-Time Database

This report has been generated from the “real-time” database, as contributed by units at the date of publication. Results are dependent on the timeliness and completeness of data submission by units. We try to provide indices to allow evaluation of the completeness both overall and for individual hospitals. However, results are preliminary and subject to change. The subsequent report from the Analysis database, following the end of year survey, will provide the final results for this observation period.

Contents

1	Incidence of Peritonitis in Patients Treated with Peritoneal Dialysis	3
1.1	Adult	3
1.2	Paediatric	7
2	Dialysis Access Planning at Commencement of Dialysis	8
2.1	All Dialysis Access Planning	8
2.1.1	Adult	8
2.1.2	Paediatric	14
2.2	Vascular Access at First Haemodialysis	15
2.2.1	Adult	15
2.2.2	Paediatric	22
2.3	HD Vascular Access Planning	23
2.3.1	Adult	23
2.3.2	Paediatric	29
2.4	PD Catheter Planning	30
2.4.1	Adult	30
2.4.2	Paediatric	34
3	Transplantation Wait Listing	35
3.1	Adult	35
3.2	Paediatric	40
4	ANZDATA annual data survey timeliness	41
5	Kidney Replacement Therapy (KRT) Modality	45
5.1	Incident Modality	45
5.1.1	Adult	45
5.1.2	Paediatric	49
5.2	Prevalent Modality	50
5.2.1	Adult	50
5.2.2	Paediatric	54

1 Incidence of Peritonitis in Patients Treated with Peritoneal Dialysis

1.1 Adult

This table presents the total number of peritonitis episodes and patient exposure in years by Centre. Patient totals, exposure and peritonitis episodes were determined using the hospital at which the patient was receiving treatment at the time. So, if a patient transferred units during the observation period, the subsequent exposure and peritonitis episodes were allocated to the new unit. Months per episode (PM per Episode) is also reported. This should be interpreted as the average number of months between episodes of peritonitis; it can not be calculated if the peritonitis rate is zero. The 2023 episodes are based on the 2023 analysis database and are provided to allow assessment of possible under-reporting. This is a particular issue with peritonitis reporting. Patients are excluded from this adult report if they were treated at a paediatric hospital. In rare cases when patients younger than 18 years are treated at an adult centre, they are included in this adult report. Any patients 18 years and older treated at a paediatric hospital are excluded from this report. This quality indicator is presented for Australia only as New Zealand peritonitis episode data is reported through the New Zealand Peritoneal Dialysis Registry. Note that the 2022 International Society for Peritoneal Dialysis peritonitis guideline has a target that the overall peritonitis rate should be no more than 0.40 episodes per year at risk.

Centre	PD Patients	No of Episodes	Person Years	Rate (95% CI)	PM per Episode (95% CI)	2023 Episodes
Australia	3826	693	2705.10	0.26 (0.24-0.28)	46.84 (43.48-50.53)	727
Queensland	718	139	479.93	0.29 (0.24-0.34)	41.43 (35.09-49.29)	149
Bundaberg Hospital	17	2	12.89	0.16 (0.02-0.56)	77.36 (21.41-638.75)	7
Cairns Hospital	54	3	34.19	0.09 (0.02-0.26)	136.77 (46.80-663.22)	20
Gold Coast Private Hospital	1	0	0.45	0.00 (0.00-8.22)	. (1.46-.)	0
Gold Coast University Hospital	63	6	45.16	0.13 (0.05-0.29)	90.31 (41.49-246.09)	7
Hervey Bay Hospital	26	11	19.67	0.56 (0.28-1.00)	21.46 (11.99-42.99)	7
Ipswich Hospital	31	6	21.44	0.28 (0.10-0.61)	42.87 (19.70-116.83)	6
John Flynn Private Hospital	1	0	0.48	0.00 (0.00-7.70)	. (1.56-.)	0
Mackay Base Hospital	20	1	13.70	0.07 (0.00-0.41)	164.40 (29.51-6493.55)	2
Metro South Kidney and Transplant Services	237	47	156.00	0.30 (0.22-0.40)	39.83 (29.95-54.21)	50
Logan Hospital	105	28	71.01	0.39 (0.26-0.57)	30.43 (21.06-45.80)	24
Princess Alexandra Hospital	132	19	84.98	0.22 (0.13-0.35)	53.67 (34.37-89.15)	26
Rockhampton Hospital	15	1	13.03	0.08 (0.00-0.43)	156.39 (28.07-6176.92)	1
Royal Brisbane and Women's Hospital	112	21	73.16	0.29 (0.18-0.44)	41.80 (27.35-67.53)	13
St Andrew's Ipswich Private Hospital	1	0	0.05	0.00 (0.00-79.26)	. (0.15-.)	0
Sunshine Coast University Hospital	24	2	11.49	0.17 (0.02-0.63)	68.94 (19.09-569.30)	3
Toowoomba Hospital	53	13	36.76	0.35 (0.19-0.60)	33.93 (19.84-63.72)	15
Townsville University Hospital	63	26	41.47	0.63 (0.41-0.92)	19.14 (13.06-29.30)	18

continued on next page

continued from previous page

Centre	PD Patients	No of Episodes	Person Years	Rate (95% CI)	PM per Episode (95% CI)	2023 Episodes
New South Wales	1353	299	1008.17	0.30 (0.26-0.33)	40.46 (36.13-45.47)	284
Coffs Harbour Hospital	5	0	5.01	0.00 (0.00-0.74)	. (16.30-.)	0
Concord Repatriation General Hospital	44	3	33.45	0.09 (0.02-0.26)	133.79 (45.78-648.78)	12
Dubbo Base Hospital	12	2	7.64	0.26 (0.03-0.95)	45.83 (12.69-378.45)	2
Gosford Hospital	29	4	20.98	0.19 (0.05-0.49)	62.93 (24.58-230.97)	2
Gregory Hills B.Braun Renal Care Centre	1	0	0.00	0.00 (0.00-1347.36)	. (0.01-.)	0
John Hunter Hospital	87	17	60.70	0.28 (0.16-0.45)	42.85 (26.76-73.55)	26
Lismore Base Hospital	23	7	17.51	0.40 (0.16-0.82)	30.01 (14.57-74.65)	11
Manning Rural Hospital	18	1	13.50	0.07 (0.00-0.41)	162.00 (29.08-6398.82)	1
Orange Health Service	10	3	8.51	0.35 (0.07-1.03)	34.03 (11.64-165.00)	0
Port Macquarie Base Hospital	9	0	6.68	0.00 (0.00-0.55)	. (21.74-.)	7
Royal North Shore Hospital	81	15	64.13	0.23 (0.13-0.39)	51.30 (31.10-91.66)	8
Royal Prince Alfred Hospital	47	6	33.16	0.18 (0.07-0.39)	66.31 (30.47-180.69)	11
South West Sydney Renal Service	312	83	237.52	0.35 (0.28-0.43)	34.34 (27.70-43.11)	73
St George Hospital	54	5	35.71	0.14 (0.05-0.33)	85.71 (36.73-263.97)	7
St Vincent's Hospital Sydney	25	8	17.66	0.45 (0.20-0.89)	26.49 (13.45-61.36)	3
Tamworth Hospital	20	4	13.24	0.30 (0.08-0.77)	39.71 (15.51-145.75)	5
The Prince of Wales Hospital	41	5	28.95	0.17 (0.06-0.40)	69.48 (29.77-213.98)	5
Tweed Valley Hospital	17	2	9.57	0.21 (0.03-0.76)	57.40 (15.89-473.94)	3
Wagga Wagga Base Hospital	23	2	16.16	0.12 (0.01-0.45)	96.99 (26.85-800.84)	6
Western Sydney Renal Health Services	425	120	327.41	0.37 (0.30-0.44)	32.74 (27.38-39.49)	96
Nepean Hospital	61	16	47.75	0.34 (0.19-0.54)	35.81 (22.05-62.65)	22
Westmead Hospital	364	104	279.67	0.37 (0.30-0.45)	32.27 (26.63-39.49)	74
Wollongong Hospital	70	12	50.68	0.24 (0.12-0.41)	50.68 (29.01-98.08)	6
Australian Capital Territory	56	9	46.01	0.20 (0.09-0.37)	61.34 (32.31-134.15)	11
Canberra Hospital	56	9	46.01	0.20 (0.09-0.37)	61.34 (32.31-134.15)	11
Victoria	947	122	633.15	0.19 (0.16-0.23)	62.28 (52.16-74.99)	110
Alfred Hospital	113	15	72.42	0.21 (0.12-0.34)	57.94 (35.13-103.52)	18
Austin Hospital	46	6	30.03	0.20 (0.07-0.43)	60.07 (27.60-163.68)	4
Bendigo Hospital	65	8	43.91	0.18 (0.08-0.36)	65.87 (33.43-152.57)	11
Eastern Health Integrated Renal Services	56	3	39.09	0.08 (0.02-0.22)	156.35 (53.50-758.17)	6
Monash Medical Centre	194	40	131.86	0.30 (0.22-0.41)	39.56 (29.05-55.37)	17

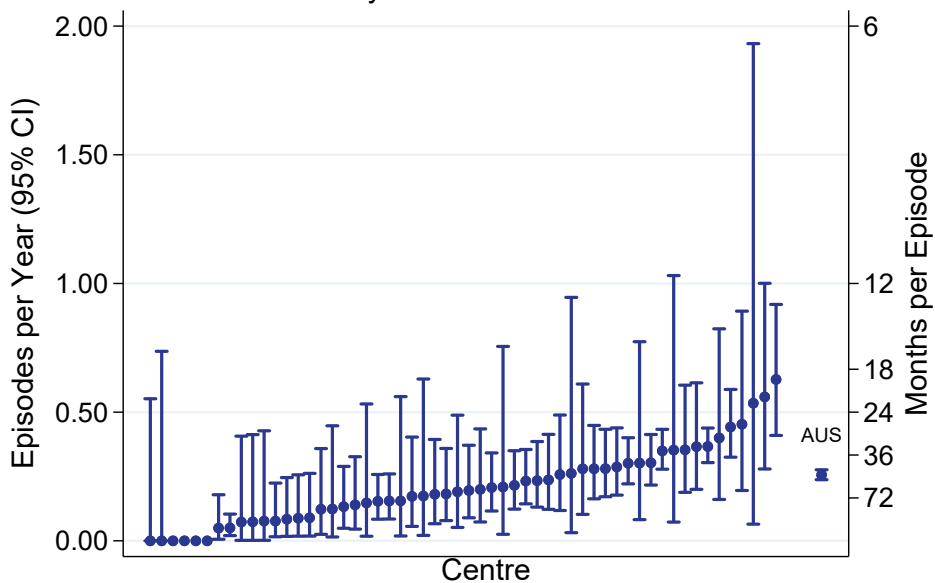
continued on next page

continued from previous page

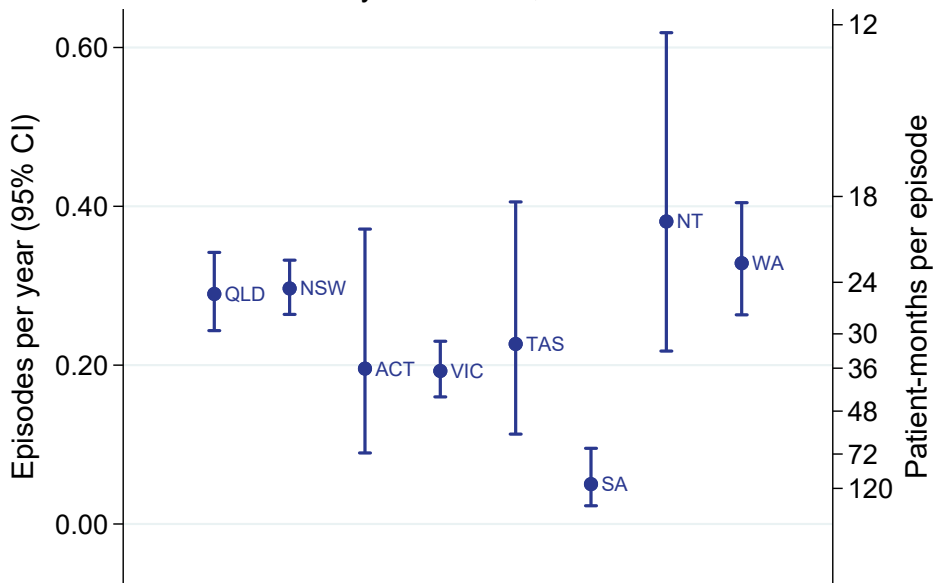
Centre	PD Patients	No of Episodes	Person Years	Rate (95% CI)	PM per Episode (95% CI)	2023 Episodes
Northern Health Service Melbourne	49	3	35.69	0.08 (0.02-0.25)	142.75 (48.85-692.22)	5
St Vincent's Hospital Melbourne	107	16	74.22	0.22 (0.12-0.35)	55.67 (34.28-97.39)	18
The Royal Melbourne Hospital	144	14	90.35	0.15 (0.08-0.26)	77.44 (46.16-141.65)	18
University Hospital Geelong Barwon Health	38	3	24.46	0.12 (0.03-0.36)	97.85 (33.48-474.49)	4
Western Health Service	135	14	91.11	0.15 (0.08-0.26)	78.10 (46.55-142.85)	9
Tasmania	69	11	48.53	0.23 (0.11-0.41)	52.94 (29.59-106.06)	14
Launceston General Hospital	46	9	34.95	0.26 (0.12-0.49)	46.59 (24.55-101.90)	10
Royal Hobart Hospital	23	2	13.59	0.15 (0.02-0.53)	81.51 (22.56-673.07)	4
South Australia	235	9	179.31	0.05 (0.02-0.10)	239.08 (125.95-522.86)	28
Central Northern Adelaide Renal Service	186	7	138.97	0.05 (0.02-0.10)	238.24 (115.63-592.56)	23
Flinders Medical Centre	49	2	40.34	0.05 (0.01-0.18)	242.04 (67.00-1998.58)	5
Northern Territory	59	16	42.00	0.38 (0.22-0.62)	31.50 (19.40-55.11)	30
Alice Springs Hospital	6	2	3.74	0.53 (0.06-1.93)	22.44 (6.21-185.29)	1
Royal Darwin Hospital	53	14	38.26	0.37 (0.20-0.61)	32.80 (19.55-59.99)	29
Western Australia	389	88	267.99	0.33 (0.26-0.40)	36.54 (29.66-45.56)	101
Fiona Stanley Hospital	129	21	90.44	0.23 (0.14-0.35)	51.68 (33.81-83.49)	21
Royal Perth Hospital	104	20	71.29	0.28 (0.17-0.43)	42.78 (27.70-70.03)	28
Sir Charles Gairdner Hospital	156	47	106.25	0.44 (0.33-0.59)	27.13 (20.40-36.92)	52

INTERIM

PD Peritonitis Rate, Adults
01 January 2024 - 31 December 2024



PD Peritonitis Rate, Adults
By Jurisdiction, 2024



1.2 Paediatric

This table presents the total number of peritonitis episodes and patient exposure in years by Centre. Patient totals, exposure and peritonitis episodes were determined using the hospital at which the patient was receiving treatment at the time. So, if a patient transferred units during the observation period, the subsequent exposure and peritonitis episodes were allocated to the new unit. Months per episode (PM per Episode) is also reported. This should be interpreted as the average number of months between episodes of peritonitis; it can not be calculated if the peritonitis rate is zero. The 2023 episodes are based on the 2023 analysis database and are provided to allow assessment of possible under-reporting. This is a particular issue with peritonitis reporting. Patients are included in this paediatric report if they were treated at a paediatric hospital. In rare cases when patients younger than 18 years are treated at an adult centre, they are included in the adult report. Any patients 18 years and older treated at a paediatric hospital are included in this report. Note that the 2022 International Society for Peritoneal Dialysis peritonitis guideline has a target that the overall peritonitis rate should be no more than 0.40 episodes per year at risk.

Centre	PD Patients	No of Episodes	Person Years	Rate (95% CI)	PM per Episode (95% CI)	2023 Episodes
Australia	70	13	43.14	0.30 (0.16-0.52)	39.82 (23.29-74.79)	25
Queensland	22	4	14.92	0.27 (0.07-0.69)	44.77 (17.49-164.32)	11
Child and Adolescent Renal Service	22	4	14.92	0.27 (0.07-0.69)	44.77 (17.49-164.32)	11
New South Wales	8	0	5.63	0.00 (0.00-0.65)	. (18.33-.)	2
Sydney Children's Hospital	5	0	3.01	0.00 (0.00-1.23)	. (9.78-.)	2
The Children's Hospital at Westmead	3	0	2.63	0.00 (0.00-1.40)	. (8.55-.)	0
Victoria	29	7	15.26	0.46 (0.18-0.95)	26.15 (12.69-65.05)	10
Monash Children's Centre	9	1	4.76	0.21 (0.01-1.17)	57.13 (10.25-2256.65)	3
Royal Children's Hospital	20	6	10.49	0.57 (0.21-1.24)	20.99 (9.64-57.19)	7
South Australia	6	1	3.41	0.29 (0.01-1.64)	40.87 (7.34-1614.30)	0
Women's and Children's Hospital	6	1	3.41	0.29 (0.01-1.64)	40.87 (7.34-1614.30)	0
Western Australia	5	1	3.92	0.25 (0.01-1.42)	47.08 (8.45-1859.56)	2
Perth Children's Hospital	5	1	3.92	0.25 (0.01-1.42)	47.08 (8.45-1859.56)	2
New Zealand	10	3	5.74	0.52 (0.11-1.53)	22.94 (7.85-111.25)	5
Starship Children's Hospital	10	3	5.74	0.52 (0.11-1.53)	22.94 (7.85-111.25)	5

2 Dialysis Access Planning at Commencement of Dialysis

2.1 All Dialysis Access Planning

2.1.1 Adult

This table presents the numbers of patients beginning haemodialysis or peritoneal dialysis and the percentage starting with a permanent access (an AVF or AVG for haemodialysis and all peritoneal dialysis patients) during the observation window by Centre, where dialysis was the first kidney replacement therapy. Patients are excluded from this adult report if they were treated at a paediatric hospital. In rare cases when patients younger than 18 years are treated at an adult centre, they are included in this adult report. Any patients 18 years and older treated at a paediatric hospital are excluded from this report. Some Centres did not report type of first access for all new HD patients. The percent beginning with a permanent access is based on the number of patients with data available for first access. The number of new dialysis patients for 2023 from the analysis database is also provided to allow assessment of possible under-reporting. Finally, the total of Early Referrals (patients seen more than 3 months before first treatment) and the percentage of Early Referrals with a permanent access are also presented.

Centre	Dialysis Patients	AVF or AVG or PD	Vascular Catheter	Missing Access Data	2023 Dialysis Patients	% of AVF or AVG or PD (95 % CI)	Early Referral	% of Early Referrals with AVF or AVG or PD
Australia	3294	1775	1512	7	3301	54 (52-56)	2723	60 (58-62)
Queensland	699	372	327	0	706	53 (49-57)	589	61 (57-65)
Bundaberg Hospital	23	14	9	0	14	61 (39-80)	19	68 (43-87)
Cairns Hospital	74	47	27	0	63	64 (52-74)	64	73 (61-84)
Cairns Private Hospital	4	3	1	0	2	75 (19-99)	4	75 (19-99)
Chermside Dialysis Centre	6	4	2	0	14	67 (22-96)	6	67 (22-96)
Gold Coast Private Hospital	7	1	6	0	12	14 (0-58)	1	100 (2-100)
Gold Coast University Hospital	56	23	33	0	49	41 (28-55)	42	50 (34-66)
Henry Dalziel Dialysis Clinic - Greenslopes	26	14	12	0	38	54 (33-73)	25	56 (35-76)
Hervey Bay Hospital	17	8	9	0	18	47 (23-72)	13	62 (32-86)
Ipswich Hospital	35	12	23	0	42	34 (19-52)	27	41 (22-61)
John Flynn Private Hospital	4	1	3	0	10	25 (1-81)	4	25 (1-81)
Mackay Base Hospital	15	12	3	0	26	80 (52-96)	15	80 (52-96)
Mater Hospital, Brisbane	12	8	4	0	11	67 (35-90)	10	80 (44-97)
Mater Hospital, Townsville	5	1	4	0	13	20 (1-72)	5	20 (1-72)
Metro South Kidney and Transplant Services	133	81	52	0	115	61 (52-69)	117	67 (57-75)
Logan Hospital	54	31	23	0	34	57 (43-71)	44	68 (52-81)
Princess Alexandra Hospital	72	48	24	0	78	67 (55-77)	67	70 (58-81)

continued on next page

continued from previous page

Centre	Dialysis Patients	AVF or AVG or PD	Vascular Catheter	Missing Access Data	2023 Dialysis Patients	% of AVF or AVG or PD (95 % CI)	Early Referral	% of Early Referrals with AVF or AVG or PD
<i>Redlands Hospital</i>	7	2	5	0	3	29 (4-71)	6	17 (0-64)
Morayfield B.Braun Renal Care Centre	1	1	0	0	1	100 (2-100)	1	100 (2-100)
Nambour Selangor Private Hospital	2	2	0	0	0	100 (16-100)	1	100 (2-100)
North Lakes Dialysis Centre	10	7	3	0	7	70 (35-93)	10	70 (35-93)
Pindara Renal Unit	5	3	2	0	7	60 (15-95)	5	60 (15-95)
Rockhampton Hospital	18	3	15	0	14	17 (4-41)	11	27 (6-61)
Royal Brisbane and Women's Hospital	72	49	23	0	56	68 (56-79)	60	78 (66-88)
St Andrew's Ipswich Private Hospital	10	7	3	0	13	70 (35-93)	10	70 (35-93)
St Andrew's Toowoomba B.Braun's Dialysis Clinic	9	3	6	0	3	33 (7-70)	5	60 (15-95)
Sunshine Coast University Hospital	31	18	13	0	46	58 (39-75)	28	64 (44-81)
Sunshine Coast University Private Hospital	4	2	2	0	4	50 (7-93)	4	50 (7-93)
The Wesley Hospital Brisbane	30	7	23	0	45	23 (10-42)	23	26 (10-48)
Toowoomba Hospital	28	19	9	0	38	68 (48-84)	23	78 (56-93)
Torres & Cape Kidney Health	1	1	0	0	2	100 (2-100)	1	100 (2-100)
Townsville University Hospital	61	21	40	0	43	34 (23-48)	55	35 (22-49)
New South Wales	921	492	426	3	912	54 (50-57)	772	59 (55-62)
Bathurst Base Hospital	1	0	1	0	3	0 (0-98)	1	0 (0-98)
Coffs Harbour Hospital	7	5	2	0	17	71 (29-96)	7	71 (29-96)
Concord Repatriation General Hospital	36	19	16	1	21	54 (37-71)	28	64 (44-81)
Dubbo Base Hospital	20	13	7	0	15	65 (41-85)	16	75 (48-93)
Gosford Hospital	39	17	22	0	43	44 (28-60)	29	59 (39-76)
Gregory Hills B.Braun Renal Care Centre	4	0	4	0	9	0 (0-60)	4	0 (0-60)
John Hunter Hospital	67	45	22	0	59	67 (55-78)	59	73 (60-84)
Lismore Base Hospital	21	14	7	0	27	67 (43-85)	20	70 (46-88)
Liverpool Private Dialysis Centre	2	1	1	0	0	50 (1-99)	2	50 (1-99)
Manning Rural Hospital	11	4	7	0	9	36 (11-69)	7	29 (4-71)
Mater Hospital, North Sydney	1	1	0	0	11	100 (2-100)	1	100 (2-100)
Mayo Private Hospital	3	1	2	0	1	33 (1-91)	3	33 (1-91)
Newcastle Dialysis Centre	2	2	0	0	5	100 (16-100)	2	100 (16-100)
Orange Health Service	13	4	9	0	16	31 (9-61)	9	44 (14-79)
Port Macquarie Base Hospital	17	10	7	0	16	59 (33-82)	14	71 (42-92)

continued on next page

continued from previous page

Centre	Dialysis Patients	AVF or AVG or PD	Vascular Catheter	Missing Access Data	2023 Dialysis Patients	% of AVF or AVG or PD (95 % CI)	Early Referral	% of Early Referrals with AVF or AVG or PD
Royal North Shore Hospital	52	35	17	0	85	67 (53-80)	40	70 (53-83)
Royal Prince Alfred Hospital	41	19	22	0	47	46 (31-63)	38	47 (31-64)
South West Sydney Renal Service	183	78	104	1	117	43 (36-50)	178	43 (36-51)
St George Hospital	40	26	14	0	41	65 (48-79)	33	73 (54-87)
St Vincent's Hospital Sydney	23	7	16	0	30	30 (13-53)	12	58 (28-85)
St Vincent's Lismore Private Dialysis Centre	4	4	0	0	7	100 (40-100)	4	100 (40-100)
Sydney Adventist Hospital	5	2	3	0	9	40 (5-85)	5	40 (5-85)
Tamworth Hospital	27	13	13	1	29	50 (30-70)	15	67 (38-88)
The Prince of Wales Hospital	18	10	8	0	22	56 (31-78)	15	67 (38-88)
Tweed Valley Hospital	15	6	9	0	15	40 (16-68)	14	43 (18-71)
Wagga Wagga Base Hospital	34	15	19	0	31	44 (27-62)	25	44 (24-65)
Western Sydney Renal Health Services	207	124	83	0	185	60 (53-67)	165	65 (58-73)
<i>Nepean Hospital</i>	52	24	28	0	34	46 (32-61)	36	58 (41-74)
<i>Westmead Hospital</i>	155	100	55	0	151	65 (56-72)	129	67 (59-75)
Wollongong Hospital	28	17	11	0	42	61 (41-78)	26	65 (44-83)
Australian Capital Territory	76	36	40	0	59	47 (36-59)	68	51 (39-64)
Access Nephrology	9	4	5	0	9	44 (14-79)	8	50 (16-84)
Canberra Hospital	67	32	35	0	50	48 (35-60)	60	52 (38-65)
Victoria	843	501	340	2	832	60 (56-63)	708	65 (62-69)
Alfred Hospital	68	37	31	0	65	54 (42-67)	65	55 (43-68)
Austin Hospital	51	24	27	0	73	47 (33-62)	45	49 (34-64)
Bendigo Hospital	34	17	17	0	29	50 (32-68)	28	61 (41-78)
Eastern Health Integrated Renal Services	57	36	21	0	54	63 (49-76)	48	67 (52-80)
Epworth Eastern Hospital	10	8	2	0	11	80 (44-97)	10	80 (44-97)
Epworth Richmond Hospital	13	6	7	0	10	46 (19-75)	12	42 (15-72)
Forest Hill Dialysis Centre	2	2	0	0	5	100 (16-100)	2	100 (16-100)
Malvern Dialysis Centre	15	9	6	0	11	60 (32-84)	8	88 (47-100)
Monash Medical Centre	183	125	58	0	167	68 (61-75)	160	72 (65-79)
Northern Health Service Melbourne	60	38	22	0	53	63 (50-75)	48	73 (58-85)
Peninsula Health Renal Services	16	6	10	0	0	38 (15-65)	16	38 (15-65)

continued on next page

continued from previous page

Centre	Dialysis Patients	AVF or AVG or PD	Vascular Catheter	Missing Access Data	2023 Dialysis Patients	% of AVF or AVG or PD (95 % CI)	Early Referral	% of Early Referrals with AVF or AVG or PD
South Eastern Private Hospital Dialysis Centre	4	1	3	0	3	25 (1-81)	0	–
St Vincent's Hospital Melbourne	60	41	19	0	69	68 (55-80)	42	86 (71-95)
Sunshine Private Dialysis Centre Fresenius	1	1	0	0	0	100 (2-100)	0	–
The Royal Melbourne Hospital	123	78	45	0	121	63 (54-72)	101	73 (64-82)
University Hospital Geelong Barwon Health	39	18	19	2	59	49 (32-66)	33	55 (36-72)
Western Health Service	107	54	53	0	95	50 (41-60)	90	54 (44-65)
Tasmania	62	40	22	0	47	65 (51-76)	56	64 (50-77)
Launceston General Hospital	28	18	10	0	28	64 (44-81)	26	65 (44-83)
Royal Hobart Hospital	34	22	12	0	19	65 (46-80)	30	63 (44-80)
South Australia	217	118	98	1	234	55 (48-61)	191	61 (54-68)
Central Northern Adelaide Renal Service	165	87	77	1	179	53 (45-61)	147	59 (50-67)
Flinders Medical Centre	52	31	21	0	55	60 (45-73)	44	70 (55-83)
Northern Territory	108	39	68	1	135	36 (27-46)	103	38 (28-48)
Alice Springs Hospital	50	11	39	0	56	22 (12-36)	49	22 (12-37)
Royal Darwin Hospital	58	28	29	1	79	49 (36-63)	54	52 (38-66)
Western Australia	368	177	191	0	376	48 (43-53)	236	60 (53-66)
Fiona Stanley Hospital	133	55	78	0	143	41 (33-50)	53	64 (50-77)
Royal Perth Hospital	140	69	71	0	125	49 (41-58)	117	53 (44-62)
Sir Charles Gairdner Hospital	95	53	42	0	108	56 (45-66)	66	68 (56-79)
New Zealand	684	275	409	0	695	40 (37-44)	483	49 (45-54)
Auckland City Hospital	79	25	54	0	70	32 (22-43)	69	36 (25-49)
Bay of Plenty Renal Unit	3	3	0	0	7	100 (29-100)	2	100 (16-100)
Christchurch Hospital	36	23	13	0	51	64 (46-79)	33	64 (45-80)
Dunedin Hospital	24	16	8	0	17	67 (45-84)	20	75 (51-91)
Hawkes Bay Hospital	16	6	10	0	27	38 (15-65)	13	46 (19-75)
Middlemore Hospital	169	56	113	0	178	33 (26-41)	67	66 (53-77)
Palmerston North Hospital	21	9	12	0	35	43 (22-66)	9	44 (14-79)

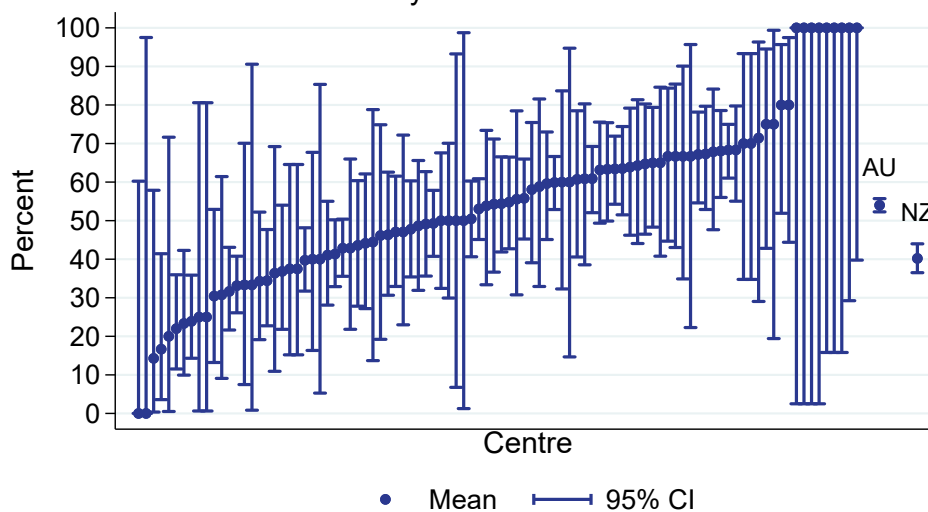
continued on next page

continued from previous page

Centre	Dialysis Patients	AVF or AVG or PD	Vascular Catheter	Missing Access Data	2023 Dialysis Patients	% of AVF or AVG or PD (95 % CI)	Early Referral	% of Early Referrals with AVF or AVG or PD
Taranaki Hospital	12	9	3	0	15	75 (43-95)	12	75 (43-95)
Waikato Hospital	146	58	88	0	148	40 (32-48)	110	45 (35-54)
Waitemata Renal Service	67	16	51	0	54	24 (14-36)	55	24 (13-37)
Wellington Regional Hospital	73	40	33	0	67	55 (43-66)	66	58 (45-70)
Whangarei Hospital	38	14	24	0	26	37 (22-54)	27	41 (22-61)

All dialysis access planning (AVF/AVG or PD) % of all dialysis starts, Adults

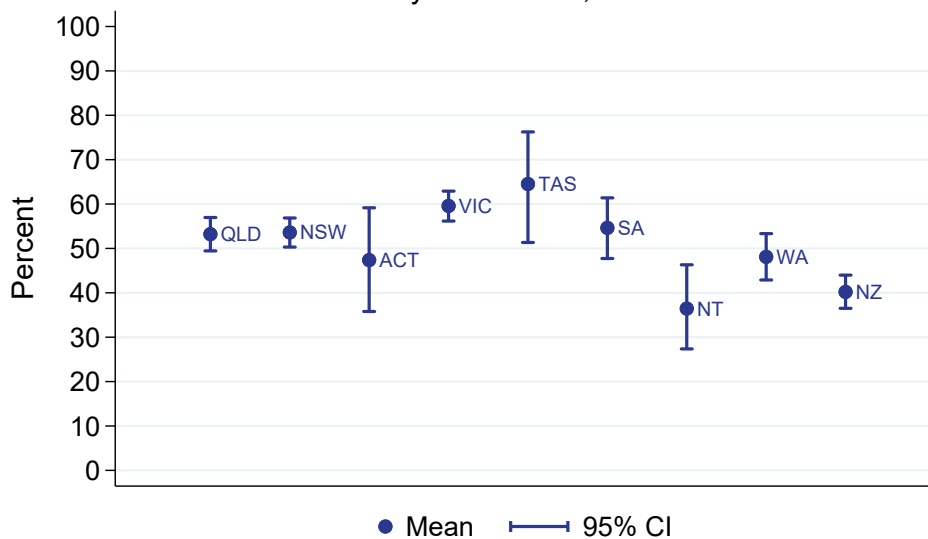
01 January 2024 - 31 December 2024



All adult dialysis starts including late referred patients

All dialysis access planning (AVF/AVG or PD) % of all dialysis starts, Adults

By Jurisdiction, 2024



2.1.2 Paediatric

This table presents the numbers of patients beginning haemodialysis or peritoneal dialysis and the percentage starting with a permanent access (an AVF or AVG for haemodialysis and all peritoneal dialysis patients) during the observation window by Centre, where dialysis was the first kidney replacement therapy. Patients are included in this paediatric report if they were treated at a paediatric hospital. In rare cases when patients younger than 18 years are treated at an adult centre, they are included in the adult report. Any patients 18 years and older treated at a paediatric hospital are included in this report. The number of new dialysis patients for 2023 from the analysis database is also provided to allow assessment of possible under-reporting. Finally, the total of Early Referrals (patients seen more than 3 months before first treatment) and the percentage of Early Referrals with a permanent access are also presented.

Centre	Dialysis Patients	AVF or AVG or PD	Vascular Catheter	Missing Access Data	2023 Dialysis Patients	% of AVF or AVG or PD (95 % CI)	Early Referral	% of Early Referrals with AVF or AVG or PD
Australia	30	20	10	0	25	67 (47-83)	23	61 (39-80)
Queensland	8	7	1	0	6	88 (47-100)	6	83 (36-100)
Child and Adolescent Renal Service	8	7	1	0	6	88 (47-100)	6	83 (36-100)
New South Wales	5	2	3	0	4	40 (5-85)	4	50 (7-93)
Sydney Children's Hospital	2	2	0	0	2	100 (16-100)	2	100 (16-100)
The Children's Hospital at Westmead	3	0	3	0	2	0 (0-71)	2	0 (0-84)
Victoria	15	9	6	0	9	60 (32-84)	11	45 (17-77)
Monash Children's Centre	5	3	2	0	2	60 (15-95)	4	50 (7-93)
Royal Children's Hospital	10	6	4	0	7	60 (26-88)	7	43 (10-82)
South Australia	2	2	0	0	2	100 (16-100)	2	100 (16-100)
Women's and Children's Hospital	2	2	0	0	2	100 (16-100)	2	100 (16-100)
New Zealand	3	3	0	0	5	100 (29-100)	2	100 (16-100)
Starship Children's Hospital	3	3	0	0	5	100 (29-100)	2	100 (16-100)

2.2 Vascular Access at First Haemodialysis

2.2.1 Adult

This table presents the numbers of patients beginning haemodialysis and the percentage starting with an AVF or AVG during the observation window by Centre, where HD was the first kidney replacement therapy. Patients are excluded from this adult report if they were treated at a paediatric hospital. In rare cases when patients younger than 18 years are treated at an adult centre, they are included in this adult report. Any patients 18 years and older treated at a paediatric hospital are excluded from this report. Some Centres did not report type of first access for all new HD patients. The percent beginning with AVF or AVG is based on the number of patients with data available for first access. The number of new HD patients for 2023 from the analysis database is also provided to allow assessment of possible under-reporting. Finally, the total of Early Referrals (patients seen more than 3 months before first treatment) and the percentage of Early Referrals with AVF or AVG are also presented.

Centre	HD Patients	AVF or AVG	Vascular Catheter	Missing Access Data	2023 HD Patients	% of AVF or AVG (95 % CI)	Early Referral	% of Early Referrals with AVF or AVG
Australia	2444	925	1512	7	2931	38 (36-40)	1948	44 (42-47)
Queensland	541	214	327	0	553	40 (35-44)	439	47 (43-52)
Bundaberg Hospital	20	11	9	0	10	55 (32-77)	17	65 (38-86)
Cairns Hospital	64	37	27	0	56	58 (45-70)	54	69 (54-80)
Cairns Private Hospital	4	3	1	0	2	75 (19-99)	4	75 (19-99)
Chermside Dialysis Centre	6	4	2	0	14	67 (22-96)	6	67 (22-96)
Gold Coast Private Hospital	6	0	6	0	12	0 (0-46)	0	–
Gold Coast University Hospital	46	13	33	0	35	28 (16-43)	33	36 (20-55)
Henry Dalziel Dialysis Clinic - Greenslopes	26	14	12	0	38	54 (33-73)	25	56 (35-76)
Hervey Bay Hospital	11	2	9	0	12	18 (2-52)	7	29 (4-71)
Ipswich Hospital	26	3	23	0	32	12 (2-30)	19	16 (3-40)
John Flynn Private Hospital	4	1	3	0	10	25 (1-81)	4	25 (1-81)
Mackay Base Hospital	12	9	3	0	18	75 (43-95)	12	75 (43-95)
Mater Hospital, Brisbane	12	8	4	0	11	67 (35-90)	10	80 (44-97)
Mater Hospital, Townsville	5	1	4	0	13	20 (1-72)	5	20 (1-72)
Metro South Kidney and Transplant Services	78	26	52	0	64	33 (23-45)	64	39 (27-52)
<i>Logan Hospital</i>	<i>30</i>	<i>7</i>	<i>23</i>	<i>0</i>	<i>14</i>	<i>23 (10-42)</i>	<i>21</i>	<i>33 (15-57)</i>
<i>Princess Alexandra Hospital</i>	<i>41</i>	<i>17</i>	<i>24</i>	<i>0</i>	<i>47</i>	<i>41 (26-58)</i>	<i>37</i>	<i>46 (29-63)</i>
<i>Redlands Hospital</i>	<i>7</i>	<i>2</i>	<i>5</i>	<i>0</i>	<i>3</i>	<i>29 (4-71)</i>	<i>6</i>	<i>17 (0-64)</i>
Morayfield B.Braun Renal Care Centre	1	1	0	0	1	100 (2-100)	1	100 (2-100)
Nambour Selangor Private Hospital	2	2	0	0	0	100 (16-100)	1	100 (2-100)

continued on next page

continued from previous page

Centre	HD Patients	AVF or AVG	Vascular Catheter	Missing Access Data	2023 HD Patients	% of AVF or AVG (95 % CI)	Early Referral	% of Early Referrals with AVF or AVG
North Lakes Dialysis Centre	10	7	3	0	7	70 (35-93)	10	70 (35-93)
Pindara Renal Unit	5	3	2	0	7	60 (15-95)	5	60 (15-95)
Rockhampton Hospital	18	3	15	0	13	17 (4-41)	11	27 (6-61)
Royal Brisbane and Women's Hospital	43	20	23	0	40	47 (31-62)	32	59 (41-76)
St Andrew's Ipswich Private Hospital	10	7	3	0	13	70 (35-93)	10	70 (35-93)
St Andrew's Toowoomba B.Braun's Dialysis Clinic	9	3	6	0	3	33 (7-70)	5	60 (15-95)
Sunshine Coast University Hospital	22	9	13	0	41	41 (21-64)	19	47 (24-71)
Sunshine Coast University Private Hospital	4	2	2	0	4	50 (7-93)	4	50 (7-93)
The Wesley Hospital Brisbane	30	7	23	0	45	23 (10-42)	23	26 (10-48)
Toowoomba Hospital	17	8	9	0	18	47 (23-72)	13	62 (32-86)
Torres & Cape Kidney Health	1	1	0	0	2	100 (2-100)	1	100 (2-100)
Townsville University Hospital	49	9	40	0	32	18 (9-32)	44	18 (8-33)
New South Wales	666	237	426	3	628	36 (32-40)	538	41 (36-45)
Bathurst Base Hospital	1	0	1	0	3	0 (0-98)	1	0 (0-98)
Coffs Harbour Hospital	7	5	2	0	16	71 (29-96)	7	71 (29-96)
Concord Repatriation General Hospital	27	10	16	1	12	38 (20-59)	20	50 (27-73)
Dubbo Base Hospital	17	10	7	0	12	59 (33-82)	14	71 (42-92)
Gosford Hospital	33	11	22	0	40	33 (18-52)	23	48 (27-69)
Gregory Hills B.Braun Renal Care Centre	4	0	4	0	9	0 (0-60)	4	0 (0-60)
John Hunter Hospital	46	24	22	0	35	52 (37-67)	39	59 (42-74)
Lismore Base Hospital	20	13	7	0	19	65 (41-85)	19	68 (43-87)
Liverpool Private Dialysis Centre	2	1	1	0	0	50 (1-99)	2	50 (1-99)
Manning Rural Hospital	9	2	7	0	7	22 (3-60)	6	17 (0-64)
Mater Hospital, North Sydney	1	1	0	0	11	100 (2-100)	1	100 (2-100)
Mayo Private Hospital	3	1	2	0	1	33 (1-91)	3	33 (1-91)
Newcastle Dialysis Centre	2	2	0	0	5	100 (16-100)	2	100 (16-100)
Orange Health Service	13	4	9	0	11	31 (9-61)	9	44 (14-79)
Port Macquarie Base Hospital	17	10	7	0	15	59 (33-82)	14	71 (42-92)
Royal North Shore Hospital	35	18	17	0	59	51 (34-69)	28	57 (37-76)
Royal Prince Alfred Hospital	35	13	22	0	35	37 (21-55)	32	38 (21-56)
South West Sydney Renal Service	121	16	104	1	61	13 (8-21)	117	14 (8-21)

continued on next page

continued from previous page

Centre	HD Patients	AVF or AVG	Vascular Catheter	Missing Access Data	2023 HD Patients	% of AVF or AVG (95 % CI)	Early Referral	% of Early Referrals with AVF or AVG
St George Hospital	25	11	14	0	28	44 (24-65)	20	55 (32-77)
St Vincent's Hospital Sydney	21	5	16	0	25	24 (8-47)	10	50 (19-81)
St Vincent's Lismore Private Dialysis Centre	4	4	0	0	7	100 (40-100)	4	100 (40-100)
Sydney Adventist Hospital	5	2	3	0	9	40 (5-85)	5	40 (5-85)
Tamworth Hospital	21	7	13	1	24	35 (15-59)	9	44 (14-79)
The Prince of Wales Hospital	10	2	8	0	17	20 (3-56)	7	29 (4-71)
Tweed Valley Hospital	11	2	9	0	11	18 (2-52)	10	20 (3-56)
Wagga Wagga Base Hospital	30	11	19	0	29	37 (20-56)	21	33 (15-57)
Western Sydney Renal Health Services	128	45	83	0	101	35 (27-44)	95	40 (30-51)
<i>Nepean Hospital</i>	42	14	28	0	25	33 (20-50)	28	46 (28-66)
<i>Westmead Hospital</i>	86	31	55	0	76	36 (26-47)	67	37 (26-50)
Wollongong Hospital	18	7	11	0	26	39 (17-64)	16	44 (20-70)
Australian Capital Territory	61	21	40	0	51	34 (23-48)	54	39 (26-53)
Access Nephrology	9	4	5	0	9	44 (14-79)	8	50 (16-84)
Canberra Hospital	52	17	35	0	42	33 (20-47)	46	37 (23-52)
Victoria	596	254	340	2	615	43 (39-47)	487	50 (45-54)
Alfred Hospital	42	11	31	0	52	26 (14-42)	40	28 (15-44)
Austin Hospital	42	15	27	0	62	36 (22-52)	38	39 (24-57)
Bendigo Hospital	19	2	17	0	18	11 (1-33)	13	15 (2-45)
Eastern Health Integrated Renal Services	41	20	21	0	38	49 (33-65)	35	54 (37-71)
Epworth Eastern Hospital	10	8	2	0	11	80 (44-97)	10	80 (44-97)
Epworth Richmond Hospital	13	6	7	0	10	46 (19-75)	12	42 (15-72)
Forest Hill Dialysis Centre	2	2	0	0	5	100 (16-100)	2	100 (16-100)
Malvern Dialysis Centre	15	9	6	0	11	60 (32-84)	8	88 (47-100)
Monash Medical Centre	126	68	58	0	117	54 (45-63)	111	60 (51-70)
Northern Health Service Melbourne	47	25	22	0	40	53 (38-68)	38	66 (49-80)
Peninsula Health Renal Services	16	6	10	0	0	38 (15-65)	16	38 (15-65)
South Eastern Private Hospital Dialysis Centre	4	1	3	0	3	25 (1-81)	0	–
St Vincent's Hospital Melbourne	28	9	19	0	40	32 (16-52)	12	50 (21-79)
Sunshine Private Dialysis Centre Fresenius	1	1	0	0	0	100 (2-100)	0	–

continued on next page

continued from previous page

Centre	HD Patients	AVF or AVG	Vascular Catheter	Missing Access Data	2023 HD Patients	% of AVF or AVG (95 % CI)	Early Referral	% of Early Referrals with AVF or AVG
The Royal Melbourne Hospital	83	38	45	0	88	46 (35-57)	65	58 (46-71)
University Hospital Geelong Barwon Health	29	8	19	2	45	30 (14-50)	23	35 (16-57)
Western Health Service	78	25	53	0	68	32 (22-44)	64	36 (24-49)
Tasmania	46	24	22	0	31	52 (37-67)	41	51 (35-67)
Launceston General Hospital	18	8	10	0	17	44 (22-69)	17	47 (23-72)
Royal Hobart Hospital	28	16	12	0	14	57 (37-76)	24	54 (33-74)
South Australia	172	73	98	1	173	43 (35-50)	147	50 (41-58)
Central Northern Adelaide Renal Service	132	54	77	1	127	41 (33-50)	115	47 (38-56)
Flinders Medical Centre	40	19	21	0	46	48 (32-64)	32	59 (41-76)
Northern Territory	99	30	68	1	117	31 (22-41)	94	32 (23-42)
Alice Springs Hospital	50	11	39	0	54	22 (12-36)	49	22 (12-37)
Royal Darwin Hospital	49	19	29	1	63	40 (26-55)	45	42 (28-58)
Western Australia	263	72	191	0	276	27 (22-33)	148	36 (28-44)
Fiona Stanley Hospital	97	19	78	0	100	20 (12-29)	24	21 (7-42)
Royal Perth Hospital	106	35	71	0	104	33 (24-43)	87	37 (27-48)
Sir Charles Gairdner Hospital	60	18	42	0	72	30 (19-43)	37	43 (27-61)
New Zealand	493	84	409	0	487	17 (14-21)	315	22 (17-27)
Auckland City Hospital	61	7	54	0	64	11 (5-22)	51	14 (6-26)
Bay of Plenty Renal Unit	1	1	0	0	0	100 (2-100)	1	100 (2-100)
Christchurch Hospital	17	4	13	0	35	24 (7-50)	16	25 (7-52)
Dunedin Hospital	17	9	8	0	6	53 (28-77)	14	64 (35-87)
Hawkes Bay Hospital	12	2	10	0	16	17 (2-48)	9	22 (3-60)
Middlemore Hospital	132	19	113	0	129	14 (9-22)	34	32 (17-51)
Palmerston North Hospital	19	7	12	0	28	37 (16-62)	8	38 (9-76)
Taranaki Hospital	5	2	3	0	6	40 (5-85)	5	40 (5-85)
Waikato Hospital	99	11	88	0	107	11 (6-19)	72	15 (8-26)
Waitemata Renal Service	62	11	51	0	44	18 (9-30)	51	18 (8-31)

continued on next page

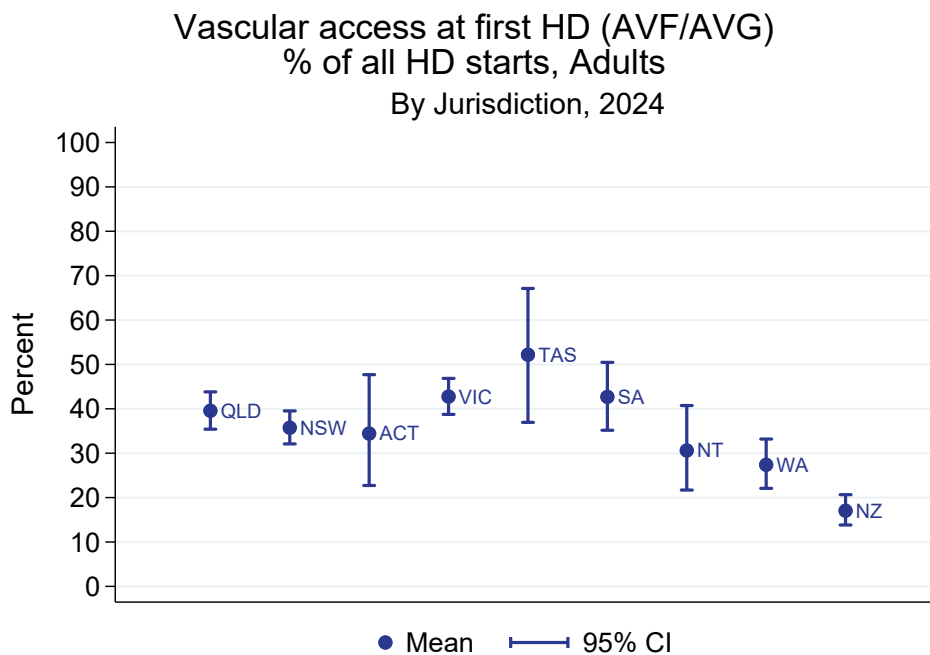
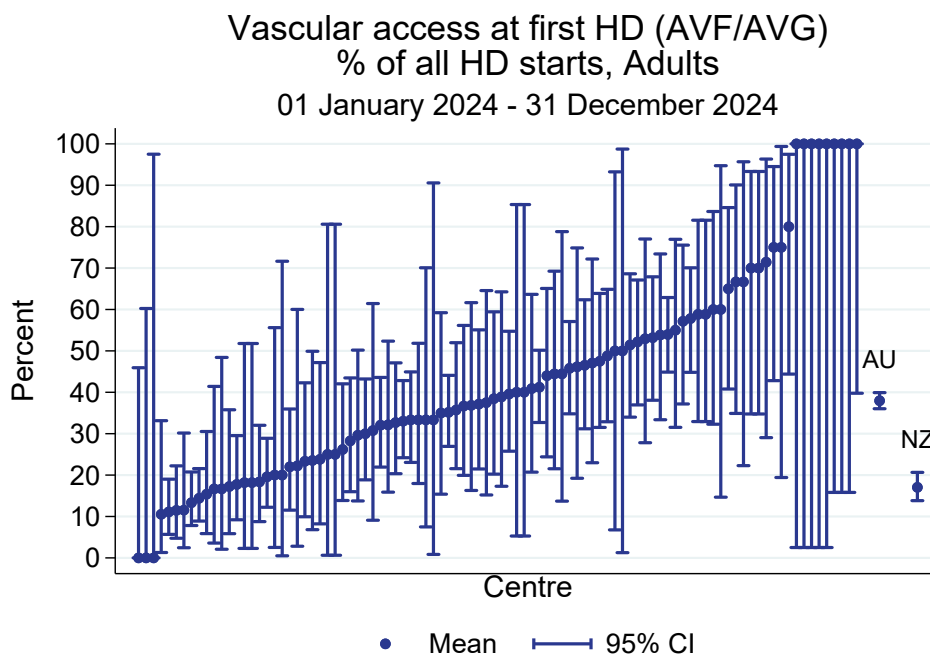
continued from previous page

Centre	HD Patients	AVF or AVG	Vascular Catheter	Missing Access Data	2023 HD Patients	% of AVF or AVG (95 % CI)	Early Referral	% of Early Referrals with AVF or AVG
Wellington Regional Hospital	39	6	33	0	31	15 (6-31)	34	18 (7-35)
Whangarei Hospital	29	5	24	0	21	17 (6-36)	20	20 (6-44)

INTERIM

The following hospitals did not report any haemodialysis patients between 01 January 2024 and 31 December 2024:

State	Hospital
VIC	Diamond Valley B.Braun Renal Care Centre Epworth Geelong Hospital North Melbourne B.Braun Renal Care Centre



2.2.2 Paediatric

This table presents the numbers of patients beginning haemodialysis and the percentage starting with an AVF or AVG during the observation window by Centre, where HD was the first kidney replacement therapy. Patients are included in this paediatric report if they were treated at a paediatric hospital. In rare cases when patients younger than 18 years are treated at an adult centre, they are included in the adult report. Any patients 18 years and older treated at a paediatric hospital are included in this report. Some Centres did not report type of first access for all new HD patients. The percent beginning with AVF or AVG is based on the number of patients with data available for first access. The number of new HD patients for 2023 from the analysis database is also provided to allow assessment of possible under-reporting. Finally, the total of Early Referrals (patients seen more than 3 months before first treatment) and the percentage of Early Referrals with AVF or AVG are also presented.

Centre	HD Patients	AVF or AVG	Vascular Catheter	Missing Access Data	2023 HD Patients	% of AVF or AVG (95 % CI)	Early Referral	% of Early Referrals with AVF or AVG
Australia	10	0	10	0	7	0 (0-31)	9	0 (0-34)
Queensland	1	0	1	0	2	0 (0-98)	1	0 (0-98)
Child and Adolescent Renal Service	1	0	1	0	2	0 (0-98)	1	0 (0-98)
New South Wales	3	0	3	2	2	0 (0-98)	2	0 (0-84)
The Children's Hospital at Westmead	3	0	3	0	2	0 (0-71)	2	0 (0-84)
Victoria	6	0	6	5	2	0 (0-98)	6	0 (0-46)
Monash Children's Centre	2	0	2	0	1	0 (0-84)	2	0 (0-84)
Royal Children's Hospital	4	0	4	0	1	0 (0-60)	4	0 (0-60)

2.3 HD Vascular Access Planning

2.3.1 Adult

This table presents the numbers of patients on haemodialysis at day 90 and the percentage starting haemodialysis with a permanent vascular access (an AVF or AVG) during the observation window by Centre. Modality changes of less than 30 days are ignored for the determination of modality at day 90. Patients are excluded from this adult report if they were treated at a paediatric hospital. In rare cases when patients younger than 18 years are treated at an adult centre, they are included in this adult report. Any patients 18 years and older treated at a paediatric hospital are excluded from this report. Some Centres did not report type of first access for all new HD patients. The percent beginning with a permanent access is based on the number of patients with data available for first access. The number of HD patients at day 90 for 2023 is also provided to allow assessment of possible under-reporting. Finally, the total of Early Referrals (patients seen more than 3 months before first treatment) and the percentage of Early Referrals with a permanent access are also presented.

Centre	HD Patients	AVF or AVG	Vascular Catheter	Missing Access Data	2023 HD Patients	% of AVF or AVG (95 % CI)	Early Referral	% of Early Referrals with AVF or AVG
Australia	2272	886	1370	16	2310	39 (37-41)	1808	46 (44-48)
Queensland	507	205	302	0	508	40 (36-45)	423	47 (42-52)
Bundaberg Hospital	12	5	7	0	11	42 (15-72)	9	56 (21-86)
Cairns Hospital	60	31	29	0	58	52 (38-65)	52	60 (45-73)
Cairns Private Hospital	4	3	1	0	2	75 (19-99)	4	75 (19-99)
Chermside Dialysis Centre	8	6	2	0	11	75 (35-97)	7	86 (42-100)
Gold Coast Private Hospital	3	0	3	0	9	0 (0-71)	0	–
Gold Coast University Hospital	40	13	27	0	34	32 (19-49)	30	43 (25-63)
Henry Dalziel Dialysis Clinic - Greenslopes	22	15	7	0	26	68 (45-86)	21	71 (48-89)
Hervey Bay Hospital	10	3	7	0	14	30 (7-65)	7	43 (10-82)
Ipswich Hospital	21	4	17	0	27	19 (5-42)	17	24 (7-50)
John Flynn Private Hospital	3	0	3	0	10	0 (0-71)	3	0 (0-71)
Mackay Base Hospital	12	9	3	0	19	75 (43-95)	12	75 (43-95)
Mater Hospital, Brisbane	12	6	6	0	13	50 (21-79)	9	67 (30-93)
Mater Hospital, Townsville	6	2	4	0	10	33 (4-78)	5	40 (5-85)
Metro South Kidney and Transplant Services	81	27	54	0	54	33 (23-45)	70	37 (26-50)
Logan Hospital	23	5	18	0	13	22 (7-44)	16	31 (11-59)
Princess Alexandra Hospital	53	20	33	0	40	38 (25-52)	50	40 (26-55)
Redlands Hospital	5	2	3	0	1	40 (5-85)	4	25 (1-81)
Nambour Selangor Private Hospital	3	2	1	0	0	67 (9-99)	1	100 (2-100)
North Lakes Dialysis Centre	12	7	5	0	6	58 (28-85)	12	58 (28-85)

continued on next page

continued from previous page

Centre	HD Patients	AVF or AVG	Vascular Catheter	Missing Access Data	2023 HD Patients	% of AVF or AVG (95 % CI)	Early Referral	% of Early Referrals with AVF or AVG
Pindara Renal Unit	3	0	3	0	8	0 (0-71)	3	0 (0-71)
Rockhampton Hospital	16	2	14	0	12	12 (2-38)	9	22 (3-60)
Royal Brisbane and Women's Hospital	40	18	22	0	50	45 (29-62)	31	55 (36-73)
St Andrew's Ipswich Private Hospital	11	7	4	0	11	64 (31-89)	11	64 (31-89)
St Andrew's Toowoomba B.Braun's Dialysis Clinic	8	4	4	0	3	50 (16-84)	5	80 (28-99)
Sunshine Coast University Hospital	32	13	19	0	32	41 (24-59)	28	46 (28-66)
Sunshine Coast University Private Hospital	3	1	2	0	7	33 (1-91)	3	33 (1-91)
The Wesley Hospital Brisbane	24	7	17	0	23	29 (13-51)	21	29 (11-52)
Toowoomba Hospital	19	10	9	0	18	53 (29-76)	16	62 (35-85)
Torres & Cape Kidney Health	1	1	0	0	2	100 (2-100)	1	100 (2-100)
Townsville University Hospital	41	9	32	0	37	22 (11-38)	36	22 (10-39)
New South Wales	596	224	370	2	603	38 (34-42)	467	44 (39-49)
Bathurst Base Hospital	1	0	1	0	3	0 (0-98)	1	0 (0-98)
Coffs Harbour Hospital	12	6	6	0	14	50 (21-79)	11	55 (23-83)
Concord Repatriation General Hospital	19	8	11	0	11	42 (20-67)	15	53 (27-79)
Dubbo Base Hospital	16	12	4	0	14	75 (48-93)	15	80 (52-96)
Gosford Hospital	34	10	24	0	34	29 (15-47)	23	39 (20-61)
Gregory Hills B.Braun Renal Care Centre	4	0	4	0	8	0 (0-60)	4	0 (0-60)
John Hunter Hospital	29	16	13	0	43	55 (36-74)	23	65 (43-84)
Lismore Base Hospital	16	13	3	0	18	81 (54-96)	16	81 (54-96)
Liverpool Private Dialysis Centre	2	1	1	0	0	50 (1-99)	2	50 (1-99)
Manning Rural Hospital	10	2	8	0	4	20 (3-56)	6	17 (0-64)
Mater Hospital, North Sydney	5	3	2	0	8	60 (15-95)	5	60 (15-95)
Mayo Private Hospital	4	2	2	0	2	50 (7-93)	3	33 (1-91)
Newcastle Dialysis Centre	3	2	1	0	5	67 (9-99)	2	100 (16-100)
Orange Health Service	16	6	10	0	11	38 (15-65)	12	50 (21-79)
Port Macquarie Base Hospital	13	9	4	0	14	69 (39-91)	11	82 (48-98)
Royal North Shore Hospital	42	14	28	0	58	33 (20-50)	28	46 (28-66)
Royal Prince Alfred Hospital	34	15	19	0	31	44 (27-62)	32	44 (26-62)
South West Sydney Renal Service	85	15	69	1	92	18 (10-28)	80	18 (10-28)
St George Hospital	25	13	12	0	28	52 (31-72)	19	68 (43-87)

continued on next page

continued from previous page

Centre	HD Patients	AVF or AVG	Vascular Catheter	Missing Access Data	2023 HD Patients	% of AVF or AVG (95 % CI)	Early Referral	% of Early Referrals with AVF or AVG
St Vincent's Hospital Sydney	16	5	11	0	21	31 (11-59)	9	56 (21-86)
St Vincent's Lismore Private Dialysis Centre	5	5	0	0	5	100 (48-100)	5	100 (48-100)
Sydney Adventist Hospital	8	2	6	0	8	25 (3-65)	8	25 (3-65)
Tamworth Hospital	21	4	16	1	18	20 (6-44)	8	25 (3-65)
The Prince of Wales Hospital	10	3	7	0	14	30 (7-65)	8	38 (9-76)
Tweed Valley Hospital	10	1	9	0	8	10 (0-45)	9	11 (0-48)
Wagga Wagga Base Hospital	27	10	17	0	29	37 (19-58)	16	44 (20-70)
Western Sydney Renal Health Services	108	35	73	0	83	32 (24-42)	79	38 (27-50)
<i>Nepean Hospital</i>	34	11	23	0	24	32 (17-51)	22	45 (24-68)
<i>Westmead Hospital</i>	74	24	50	0	59	32 (22-44)	57	35 (23-49)
Wollongong Hospital	21	12	9	0	19	57 (34-78)	17	59 (33-82)
Australian Capital Territory	50	21	29	0	57	42 (28-57)	42	50 (34-66)
Access Nephrology	11	6	5	0	8	55 (23-83)	10	60 (26-88)
Canberra Hospital	39	15	24	0	49	38 (23-55)	32	47 (29-65)
Victoria	578	245	324	9	550	43 (39-47)	468	50 (45-54)
Alfred Hospital	43	14	29	0	44	33 (19-49)	40	35 (21-52)
Austin Hospital	51	15	36	0	54	29 (17-44)	46	33 (20-48)
Bendigo Hospital	17	4	13	0	17	24 (7-50)	13	23 (5-54)
Eastern Health Integrated Renal Services	37	16	21	0	39	43 (27-61)	31	52 (33-70)
Epworth Eastern Hospital	10	10	0	0	8	100 (69-100)	10	100 (69-100)
Epworth Geelong Hospital	1	1	0	0	1	100 (2-100)	1	100 (2-100)
Epworth Richmond Hospital	13	3	10	0	11	23 (5-54)	12	17 (2-48)
Forest Hill Dialysis Centre	3	3	0	0	4	100 (29-100)	3	100 (29-100)
Malvern Dialysis Centre	15	10	5	0	10	67 (38-88)	8	100 (63-100)
Monash Medical Centre	121	58	60	3	108	49 (40-59)	102	57 (47-67)
Northern Health Service Melbourne	41	22	19	0	34	54 (37-69)	35	63 (45-79)
Peninsula Health Renal Services	13	6	7	0	0	46 (19-75)	13	46 (19-75)
South Eastern Private Hospital Dialysis Centre	5	2	3	0	1	40 (5-85)	0	–
St Vincent's Hospital Melbourne	27	7	19	1	42	27 (12-48)	10	50 (19-81)
Sunshine Private Dialysis Centre Fresenius	1	1	0	0	2	100 (2-100)	0	–

continued on next page

continued from previous page

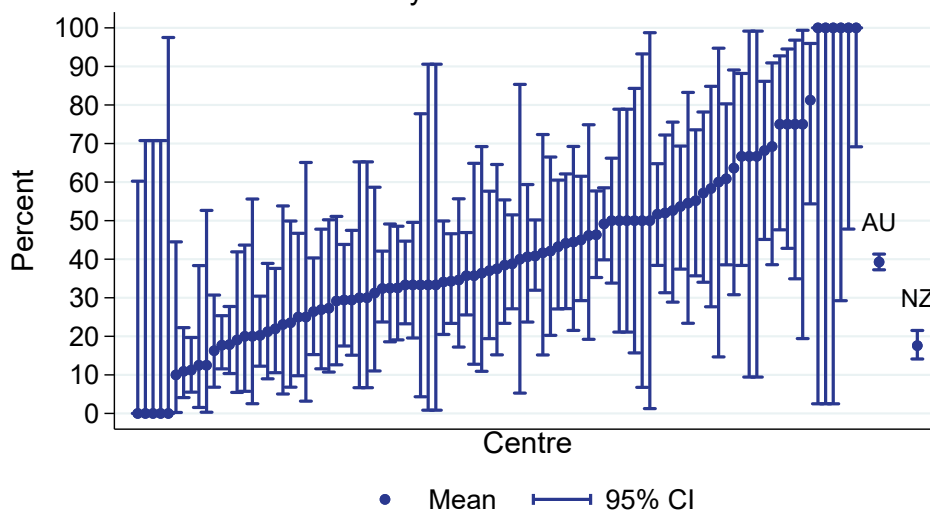
Centre	HD Patients	AVF or AVG	Vascular Catheter	Missing Access Data	2023 HD Patients	% of AVF or AVG (95 % CI)	Early Referral	% of Early Referrals with AVF or AVG
The Royal Melbourne Hospital	84	38	44	2	70	46 (35-58)	68	56 (43-68)
University Hospital Geelong Barwon Health	29	9	17	3	33	35 (17-56)	21	43 (22-66)
Western Health Service	67	26	41	0	66	39 (27-51)	55	42 (29-56)
Tasmania	41	22	19	0	24	54 (37-69)	36	56 (38-72)
Launceston General Hospital	18	8	10	0	14	44 (22-69)	15	53 (27-79)
Royal Hobart Hospital	23	14	9	0	10	61 (39-80)	21	57 (34-78)
South Australia	163	69	91	3	169	43 (35-51)	137	50 (42-59)
Central Northern Adelaide Renal Service	123	49	71	3	125	41 (32-50)	105	47 (37-57)
Flinders Medical Centre	40	20	20	0	44	50 (34-66)	32	62 (44-79)
Northern Territory	99	29	68	2	114	30 (21-40)	92	32 (22-42)
Alice Springs Hospital	53	14	39	0	53	26 (15-40)	52	27 (16-41)
Royal Darwin Hospital	46	15	29	2	61	34 (20-50)	40	38 (23-54)
Western Australia	238	71	167	0	285	30 (24-36)	143	38 (30-47)
Fiona Stanley Hospital	84	17	67	0	103	20 (12-30)	24	21 (7-42)
Royal Perth Hospital	84	30	54	0	108	36 (26-47)	72	39 (28-51)
Sir Charles Gairdner Hospital	70	24	46	0	74	34 (23-47)	47	47 (32-62)
New Zealand	433	76	356	1	446	18 (14-22)	291	21 (17-26)
Auckland City Hospital	55	6	49	0	58	11 (4-22)	45	13 (5-27)
Christchurch Hospital	14	5	9	0	34	36 (13-65)	13	38 (14-68)
Dunedin Hospital	11	4	7	0	6	36 (11-69)	8	50 (16-84)
Hawkes Bay Hospital	8	1	7	0	13	12 (0-53)	7	14 (0-58)
Middlemore Hospital	130	23	107	0	108	18 (12-25)	50	32 (20-47)
Palmerston North Hospital	22	6	16	0	22	27 (11-50)	14	14 (2-43)
Taranaki Hospital	3	1	2	0	8	33 (1-91)	3	33 (1-91)
Waikato Hospital	90	10	79	1	89	11 (6-20)	72	14 (7-24)
Waitemata Renal Service	43	7	36	0	58	16 (7-31)	31	16 (5-34)
Wellington Regional Hospital	33	7	26	0	32	21 (9-39)	29	24 (10-44)

continued on next page

continued from previous page

Centre	HD Patients	AVF or AVG	Vascular Catheter	Missing Access Data	2023 HD Patients	% of AVF or AVG (95 % CI)	Early Referral	% of Early Referrals with AVF or AVG
Whangarei Hospital	24	6	18	0	18	25 (10-47)	19	26 (9-51)

HD vascular access planning (AVF/AVG at first HD)
 % of all HD patients at day 90, Adults
 01 January 2024 - 31 December 2024



2.3.2 Paediatric

This table presents the numbers of patients on haemodialysis at day 90 and the percentage starting haemodialysis with a permanent vascular access (an AVF or AVG) during the observation window by Centre. Modality changes of less than 30 days are ignored for the determination of modality at day 90. Patients are included in this paediatric report if they were treated at a paediatric hospital. In rare cases when patients younger than 18 years are treated at an adult centre, they are included in the adult report. Any patients 18 years and older treated at a paediatric hospital are included in this report. The number of HD patients at day 90 for 2023 is also provided to allow assessment of possible under-reporting. Finally, the total of Early Referrals (patients seen more than 3 months before first treatment) and the percentage of Early Referrals with a permanent access are also presented.

Centre	HD Patients	AVF or AVG	Vascular Catheter	Missing Access Data	2023 HD Patients	% of AVF or AVG (95 % CI)	Early Referral	% of Early Referrals with AVF or AVG
Australia	8	0	8	0	3	0 (0-37)	7	0 (0-41)
Queensland	1	0	1	0	0	0 (0-98)	1	0 (0-98)
Child and Adolescent Renal Service	1	0	1	0	0	0 (0-98)	1	0 (0-98)
New South Wales	3	0	3	0	1	0 (0-71)	2	0 (0-84)
The Children's Hospital at Westmead	3	0	3	0	1	0 (0-71)	2	0 (0-84)
Victoria	4	0	4	0	1	0 (0-60)	4	0 (0-60)
Monash Children's Centre	1	0	1	0	0	0 (0-98)	1	0 (0-98)
Royal Children's Hospital	3	0	3	0	1	0 (0-71)	3	0 (0-71)
New Zealand	1	0	1	0	0	0 (0-98)	0	—
Starship Children's Hospital	1	0	1	0	0	0 (0-98)	0	—

2.4 PD Catheter Planning

2.4.1 Adult

This table presents the numbers of patients on peritoneal dialysis at day 90 and the percentage starting kidney replacement therapy (KRT) with peritoneal dialysis during the observation window by Centre. Modality changes of less than 30 days are ignored for the determination of modality at day 90. Patients are excluded from this adult report if they were treated at a paediatric hospital. In rare cases when patients younger than 18 years are treated at an adult centre, they are included in this adult report. Any patients 18 years and older treated at a paediatric hospital are excluded from this report. The number of PD patients at day 90 for 2023 is also provided to allow assessment of possible under-reporting. Finally, the total of Early Referrals (patients seen more than 3 months before first treatment) and the percentage of Early Referrals starting with PD are also presented.

Centre	90-day PD Patients	Started KRT with PD	Did not start KRT with PD	2023 90-day PD Patients	% starting with PD (95 % CI)	Early Referral	% of Early Referrals starting with PD
Australia	883	823	60	897	93 (91-95)	801	94 (92-95)
Queensland	150	135	15	152	90 (84-94)	143	91 (85-95)
Bundaberg Hospital	3	3	0	4	100 (29-100)	2	100 (16-100)
Cairns Hospital	7	5	2	13	71 (29-96)	7	71 (29-96)
Gold Coast Private Hospital	1	1	0	0	100 (2-100)	1	100 (2-100)
Gold Coast University Hospital	8	8	0	16	100 (63-100)	8	100 (63-100)
Hervey Bay Hospital	5	5	0	7	100 (48-100)	5	100 (48-100)
Ipswich Hospital	10	10	0	11	100 (69-100)	10	100 (69-100)
Mackay Base Hospital	3	2	1	5	67 (9-99)	3	67 (9-99)
Metro South Kidney and Transplant Services	53	48	5	44	91 (79-97)	51	92 (81-98)
Logan Hospital	17	16	1	19	94 (71-100)	15	100 (78-100)
Princess Alexandra Hospital	36	32	4	25	89 (74-97)	36	89 (74-97)
Royal Brisbane and Women's Hospital	26	24	2	16	92 (75-99)	25	92 (74-99)
Sunshine Coast University Hospital	9	8	1	4	89 (52-100)	9	89 (52-100)
Toowoomba Hospital	14	13	1	15	93 (66-100)	12	100 (74-100)
Townsville University Hospital	11	8	3	14	73 (39-94)	10	70 (35-93)
New South Wales	278	256	22	314	92 (88-95)	255	92 (88-95)
Concord Repatriation General Hospital	12	11	1	9	92 (62-100)	10	100 (69-100)
Dubbo Base Hospital	4	4	0	3	100 (40-100)	3	100 (29-100)
Gosford Hospital	6	6	0	8	100 (54-100)	6	100 (54-100)
John Hunter Hospital	22	22	0	17	100 (85-100)	22	100 (85-100)

continued on next page

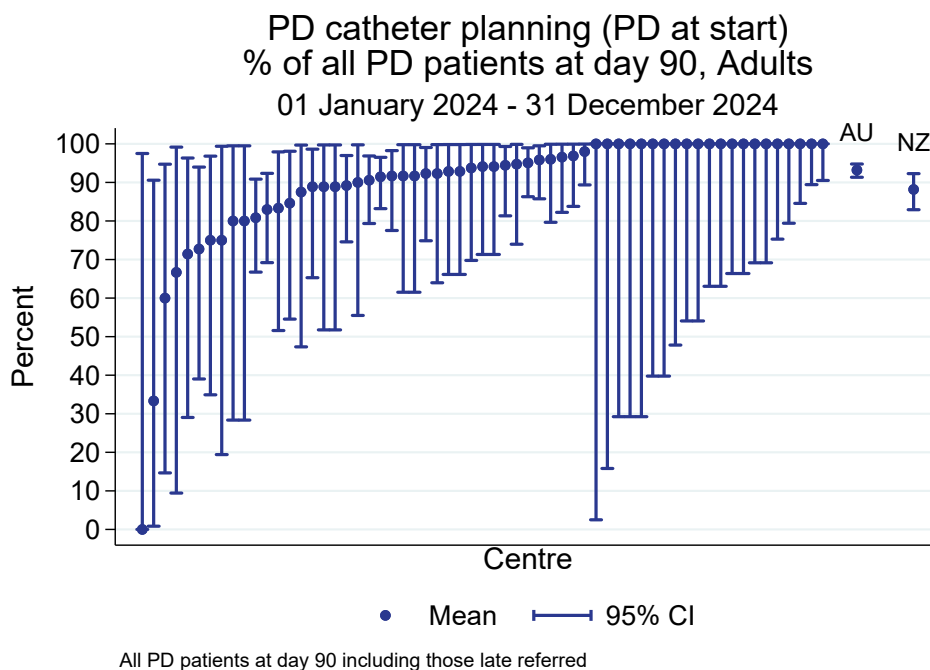
continued from previous page

Centre	90-day PD Patients	Started KRT with PD	Did not start KRT with PD	2023 90-day PD Patients	% starting with PD (95 % CI)	Early Referral	% of Early Referrals starting with PD
Lismore Base Hospital	3	3	0	5	100 (29-100)	3	100 (29-100)
Manning Rural Hospital	3	1	2	3	33 (1-91)	2	0 (0-84)
Orange Health Service	2	2	0	3	100 (16-100)	2	100 (16-100)
Port Macquarie Base Hospital	1	0	1	1	0 (0-98)	1	0 (0-98)
Royal North Shore Hospital	19	18	1	25	95 (74-100)	14	93 (66-100)
Royal Prince Alfred Hospital	9	8	1	14	89 (52-100)	9	89 (52-100)
South West Sydney Renal Service	61	58	3	63	95 (86-99)	60	95 (86-99)
St George Hospital	14	13	1	16	93 (66-100)	11	91 (59-100)
St Vincent's Hospital Sydney	4	3	1	7	75 (19-99)	3	67 (9-99)
Tamworth Hospital	4	4	0	6	100 (40-100)	4	100 (40-100)
The Prince of Wales Hospital	12	11	1	3	92 (62-100)	12	92 (62-100)
Tweed Valley Hospital	3	3	0	5	100 (29-100)	3	100 (29-100)
Wagga Wagga Base Hospital	5	4	1	2	80 (28-99)	5	80 (28-99)
Western Sydney Renal Health Services	82	75	7	107	91 (83-96)	73	92 (83-97)
<i>Nepean Hospital</i>	11	9	2	12	82 (48-98)	9	78 (40-97)
<i>Westmead Hospital</i>	71	66	5	95	93 (84-98)	64	94 (85-98)
Wollongong Hospital	12	10	2	16	83 (52-98)	12	83 (52-98)
Australian Capital Territory	17	16	1	9	94 (71-100)	16	94 (70-100)
Canberra Hospital	17	16	1	9	94 (71-100)	16	94 (70-100)
Victoria	246	231	15	235	94 (90-97)	214	95 (92-98)
Alfred Hospital	25	24	1	17	96 (80-100)	24	96 (79-100)
Austin Hospital	8	8	0	13	100 (63-100)	6	100 (54-100)
Bendigo Hospital	18	16	2	6	89 (65-99)	18	89 (65-99)
Eastern Health Integrated Renal Services	17	16	1	19	94 (71-100)	14	93 (66-100)
Monash Medical Centre	50	49	1	56	98 (89-100)	41	98 (87-100)
Northern Health Service Melbourne	13	12	1	11	92 (64-100)	12	92 (62-100)
St Vincent's Hospital Melbourne	29	28	1	26	97 (82-100)	27	100 (87-100)
The Royal Melbourne Hospital	36	34	2	37	94 (81-99)	28	100 (88-100)
University Hospital Geelong Barwon Health	13	11	2	17	85 (55-98)	13	85 (55-98)
Western Health Service	37	33	4	33	89 (75-97)	31	94 (79-99)

continued on next page

continued from previous page

Centre	90-day PD Patients	Started KRT with PD	Did not start KRT with PD	2023 90-day PD Patients	% starting with PD (95 % CI)	Early Referral	% of Early Referrals starting with PD
Tasmania	16	16	0	15	100 (79-100)	15	100 (78-100)
Launceston General Hospital	10	10	0	10	100 (69-100)	9	100 (66-100)
Royal Hobart Hospital	6	6	0	5	100 (54-100)	6	100 (54-100)
South Australia	61	59	2	56	97 (89-100)	59	97 (88-100)
Central Northern Adelaide Renal Service	48	46	2	46	96 (86-99)	47	96 (85-99)
Flinders Medical Centre	13	13	0	10	100 (75-100)	12	100 (74-100)
Northern Territory	10	9	1	19	90 (55-100)	10	90 (55-100)
Royal Darwin Hospital	10	9	1	16	90 (55-100)	10	90 (55-100)
Western Australia	105	101	4	97	96 (91-99)	89	97 (90-99)
Fiona Stanley Hospital	37	37	0	37	100 (91-100)	29	100 (88-100)
Royal Perth Hospital	36	33	3	19	92 (78-98)	31	94 (79-99)
Sir Charles Gairdner Hospital	32	31	1	41	97 (84-100)	29	97 (82-100)
New Zealand	203	179	24	231	88 (83-92)	183	89 (84-93)
Auckland City Hospital	16	16	0	11	100 (79-100)	16	100 (79-100)
Bay of Plenty Renal Unit	5	3	2	8	60 (15-95)	3	67 (9-99)
Christchurch Hospital	16	15	1	18	94 (70-100)	15	93 (68-100)
Dunedin Hospital	5	4	1	17	80 (28-99)	4	75 (19-99)
Hawkes Bay Hospital	8	6	2	13	75 (35-97)	8	75 (35-97)
Middlemore Hospital	47	38	9	51	81 (67-91)	43	84 (69-93)
Taranaki Hospital	8	7	1	5	88 (47-100)	8	88 (47-100)
Waikato Hospital	47	39	8	51	83 (69-92)	40	82 (67-93)
Waitemata Renal Service	9	9	0	14	100 (66-100)	8	100 (63-100)
Wellington Regional Hospital	33	33	0	31	100 (89-100)	31	100 (89-100)
Whangarei Hospital	9	9	0	4	100 (66-100)	7	100 (59-100)



2.4.2 Paediatric

This table presents the numbers of patients on peritoneal dialysis at day 90 and the percentage starting kidney replacement therapy (KRT) with peritoneal dialysis during the observation window by Centre. Modality changes of less than 30 days are ignored for the determination of modality at day 90. Patients are included in this paediatric report if they were treated at a paediatric hospital. In rare cases when patients younger than 18 years are treated at an adult centre, they are included in the adult report. Any patients 18 years and older treated at a paediatric hospital are included in this report. The number of HD patients at day 90 for 2023 is also provided to allow assessment of possible under-reporting. Finally, the total of Early Referrals (patients seen more than 3 months before first treatment) and the percentage of Early Referrals starting with PD are also presented.

Centre	90-day PD Patients	Started KRT with PD	Did not start KRT with PD	2023 90-day PD Patients	% starting with PD (95 % CI)	Early Referral	% of Early Referrals starting with PD
Australia	17	17	0	19	100 (80-100)	13	100 (75-100)
Queensland	9	9	0	7	100 (66-100)	7	100 (59-100)
Child and Adolescent Renal Service	9	9	0	7	100 (66-100)	7	100 (59-100)
New South Wales	2	2	0	1	100 (16-100)	2	100 (16-100)
Sydney Children's Hospital	2	2	0	1	100 (16-100)	2	100 (16-100)
Victoria	5	5	0	6	100 (48-100)	3	100 (29-100)
Monash Children's Centre	2	2	0	2	100 (16-100)	1	100 (2-100)
Royal Children's Hospital	3	3	0	4	100 (29-100)	2	100 (16-100)
South Australia	1	1	0	2	100 (2-100)	1	100 (2-100)
Women's and Children's Hospital	1	1	0	2	100 (2-100)	1	100 (2-100)
New Zealand	3	3	0	2	100 (29-100)	3	100 (29-100)
Starship Children's Hospital	3	3	0	2	100 (29-100)	3	100 (29-100)

3 Transplantation Wait Listing

3.1 Adult

This table presents the numbers of patients aged <65 years who have received kidney replacement therapy (KRT) for 6 months, and the percentage who are transplanted or on the wait list within 6 months of KRT start during the observation window by Centre. The 6 month follow-up time means these patients commenced KRT between Jul 2023 and Jun 2024. The number of patients aged <65 years commencing KRT between Jul 2022 and Jun 2023 is also provided to allow assessment of possible under-reporting. Patients are excluded from this adult report if they were treated at a paediatric hospital. In rare cases when patients younger than 18 years are treated at an adult centre, they are included in this adult report. Any patients 18 years and older treated at a paediatric hospital are excluded from this report. This quality indicator is presented for Australia only as New Zealand transplant wait listing data is not currently available to ANZDATA.

Centre	Patients	Transplanted or on wait list within 6 months	Neither transplanted nor on wait list	Jul 2022- Jun 2023 Patients	% transplanted or on wait list within 6 months (95 % CI)
Australia	1838	276	1562	1842	15 (13-17)
Queensland	395	45	350	392	11 (8-15)
Bundaberg Hospital	6	0	6	8	0 (0-46)
Cairns Hospital	38	1	37	47	3 (0-14)
Cairns Private Hospital	1	1	0	0	100 (2-100)
Chermside Dialysis Centre	4	2	2	2	50 (7-93)
Gold Coast Private Hospital	2	1	1	1	50 (1-99)
Gold Coast University Hospital	26	3	23	30	12 (2-30)
Henry Dalziel Dialysis Clinic - Greenslopes	8	1	7	11	12 (0-53)
Hervey Bay Hospital	5	0	5	13	0 (0-52)
Ipswich Hospital	26	0	26	20	0 (0-13)
John Flynn Private Hospital	1	0	1	5	0 (0-98)
Mackay Base Hospital	13	1	12	14	8 (0-36)
Mater Hospital, Brisbane	8	2	6	11	25 (3-65)
Mater Hospital, Townsville	2	0	2	1	0 (0-84)
Metro South Kidney and Transplant Services	96	11	85	63	11 (6-20)
Logan Hospital	15	0	15	21	0 (0-22)
Princess Alexandra Hospital	79	10	69	42	13 (6-22)
Redlands Hospital	2	1	1	0	50 (1-99)
Nambour Selangor Private Hospital	1	0	1	0	0 (0-98)

continued on next page

continued from previous page

Centre	Patients	Transplanted or on wait list within 6 months	Neither transplanted nor on wait list	Jul 2022- Jun 2023 Patients	% transplanted or on wait list within 6 months (95 % CI)
North Lakes Dialysis Centre	3	1	2	1	33 (1-91)
Queensland Kidney Transplant Service	1	1	0	1	100 (2-100)
Rockhampton Hospital	13	0	13	7	0 (0-25)
Royal Brisbane and Women's Hospital	44	10	34	49	23 (11-38)
St Andrew's Ipswich Private Hospital	1	0	1	3	0 (0-98)
St Andrew's Toowoomba B.Braun's Dialysis Clinic	1	0	1	1	0 (0-98)
Sunshine Coast University Hospital	20	5	15	23	25 (9-49)
Sunshine Coast University Private Hospital	2	1	1	0	50 (1-99)
The Wesley Hospital Brisbane	8	0	8	6	0 (0-37)
Toowoomba Hospital	21	1	20	22	5 (0-24)
Torres & Cape Kidney Health	1	1	0	1	100 (2-100)
Townsville University Hospital	43	2	41	48	5 (1-16)
New South Wales	477	67	410	507	14 (11-17)
Bathurst Base Hospital	2	0	2	5	0 (0-84)
Coffs Harbour Hospital	9	2	7	5	22 (3-60)
Concord Repatriation General Hospital	15	2	13	11	13 (2-40)
Dubbo Base Hospital	15	4	11	9	27 (8-55)
Gosford Hospital	12	2	10	17	17 (2-48)
John Hunter Hospital	26	4	22	29	15 (4-35)
Lismore Base Hospital	11	3	8	11	27 (6-61)
Liverpool Private Dialysis Centre	1	0	1	0	0 (0-98)
Manning Rural Hospital	8	0	8	0	0 (0-37)
Mater Hospital, North Sydney	2	0	2	3	0 (0-84)
Newcastle Dialysis Centre	1	0	1	1	0 (0-98)
Orange Health Service	12	2	10	5	17 (2-48)
Port Macquarie Base Hospital	7	1	6	6	14 (0-58)
Royal North Shore Hospital	37	6	31	49	16 (6-32)
Royal Prince Alfred Hospital	22	8	14	35	36 (17-59)
South West Sydney Renal Service	85	6	79	90	7 (3-15)
St George Hospital	30	9	21	29	30 (15-49)
St Vincent's Hospital Sydney	14	5	9	15	36 (13-65)

continued on next page

continued from previous page

Centre	Patients	Transplanted or on wait list within 6 months	Neither transplanted nor on wait list	Jul 2022- Jun 2023 Patients	% transplanted or on wait list within 6 months (95 % CI)
Tamworth Hospital	11	1	10	7	9 (0-41)
The Prince of Wales Hospital	11	2	9	12	18 (2-52)
Tweed Valley Hospital	8	0	8	4	0 (0-37)
Wagga Wagga Base Hospital	11	0	11	18	0 (0-28)
Western Sydney Renal Health Services	112	7	105	125	6 (3-12)
Nepean Hospital	20	1	19	21	5 (0-25)
Westmead Hospital	92	6	86	104	7 (2-14)
Wollongong Hospital	15	3	12	17	20 (4-48)
Australian Capital Territory	42	11	31	27	26 (14-42)
Access Nephrology	4	2	2	2	50 (7-93)
Canberra Hospital	38	9	29	25	24 (11-40)
Victoria	438	98	340	421	22 (19-27)
Alfred Hospital	32	8	24	37	25 (11-43)
Austin Hospital	27	12	15	35	44 (25-65)
Bendigo Hospital	16	3	13	12	19 (4-46)
Diamond Valley B.Braun Renal Care Centre	1	0	1	0	0 (0-98)
Eastern Health Integrated Renal Services	28	3	25	19	11 (2-28)
Epworth Eastern Hospital	2	0	2	3	0 (0-84)
Epworth Richmond Hospital	5	1	4	2	20 (1-72)
Forest Hill Dialysis Centre	1	0	1	1	0 (0-98)
Malvern Dialysis Centre	2	0	2	4	0 (0-84)
Monash Medical Centre	106	27	79	111	25 (18-35)
Northern Health Service Melbourne	34	5	29	24	15 (5-31)
Peninsula Health Renal Services	4	0	4	0	0 (0-60)
St Vincent's Hospital Melbourne	28	8	20	36	29 (13-49)
The Royal Melbourne Hospital	70	24	46	67	34 (23-47)
University Hospital Geelong Barwon Health	24	5	19	16	21 (7-42)
Western Health Service	58	2	56	52	3 (0-12)
Tasmania	28	10	18	30	36 (19-56)

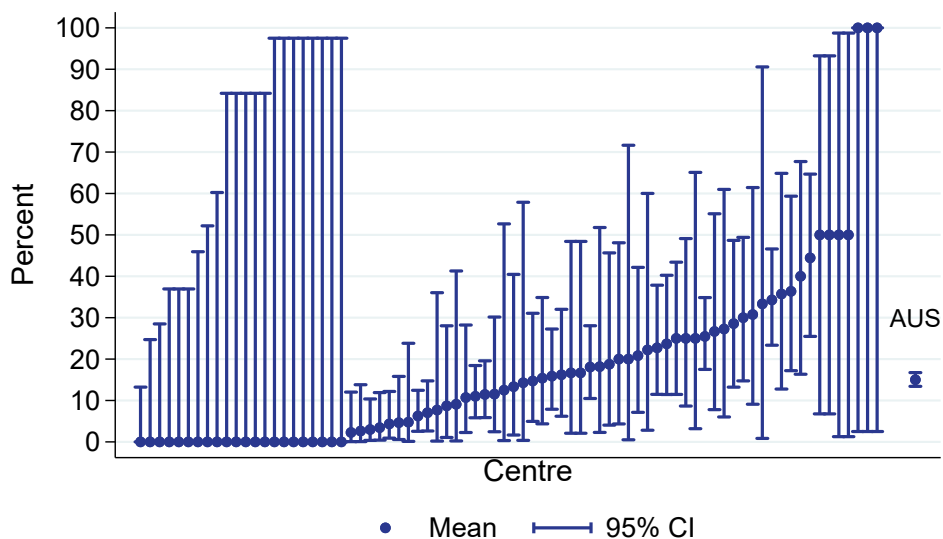
continued on next page

continued from previous page

Centre	Patients	Transplanted or on wait list within 6 months	Neither transplanted nor on wait list	Jul 2022- Jun 2023 Patients	% transplanted or on wait list within 6 months (95 % CI)
Launceston General Hospital	13	4	9	19	31 (9-61)
Royal Hobart Hospital	15	6	9	11	40 (16-68)
South Australia	132	14	118	123	11 (6-17)
Central Northern Adelaide Renal Service	109	12	97	92	11 (6-18)
Flinders Medical Centre	23	2	21	31	9 (1-28)
Northern Territory	111	3	108	107	3 (1-8)
Alice Springs Hospital	44	1	43	52	2 (0-12)
Royal Darwin Hospital	67	2	65	55	3 (0-10)
Western Australia	215	28	187	235	13 (9-18)
Fiona Stanley Hospital	83	15	68	91	18 (10-28)
Royal Perth Hospital	69	3	66	79	4 (1-12)
Sir Charles Gairdner Hospital	63	10	53	65	16 (8-27)

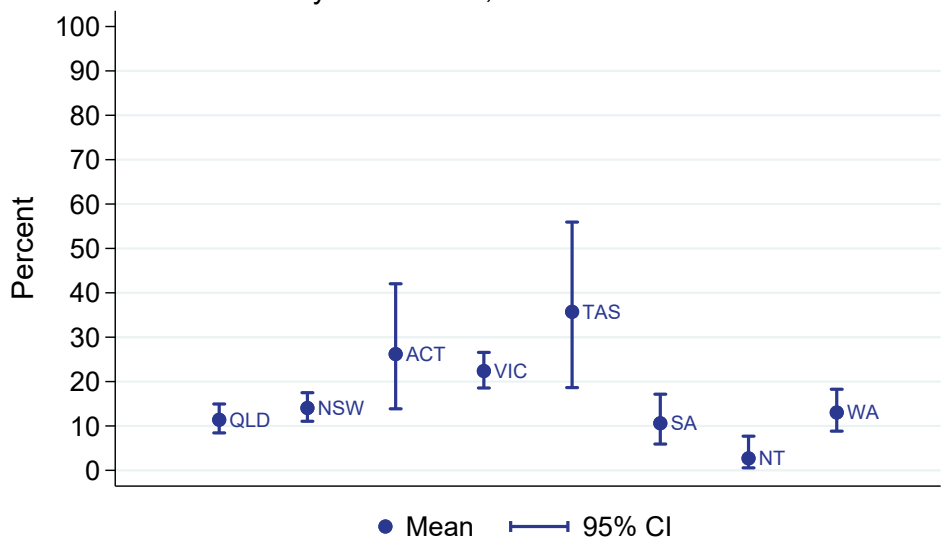
Transplantation wait listing (had a tx or on wl within 6 months)
% of all new adult patients aged <65 years

Jul 2023 - Jun 2024



Transplantation wait listing (had a tx or on wl within 6 months)
% of all new adult patients aged <65 years

By Jurisdiction, Jul 2023 - Jun 2024



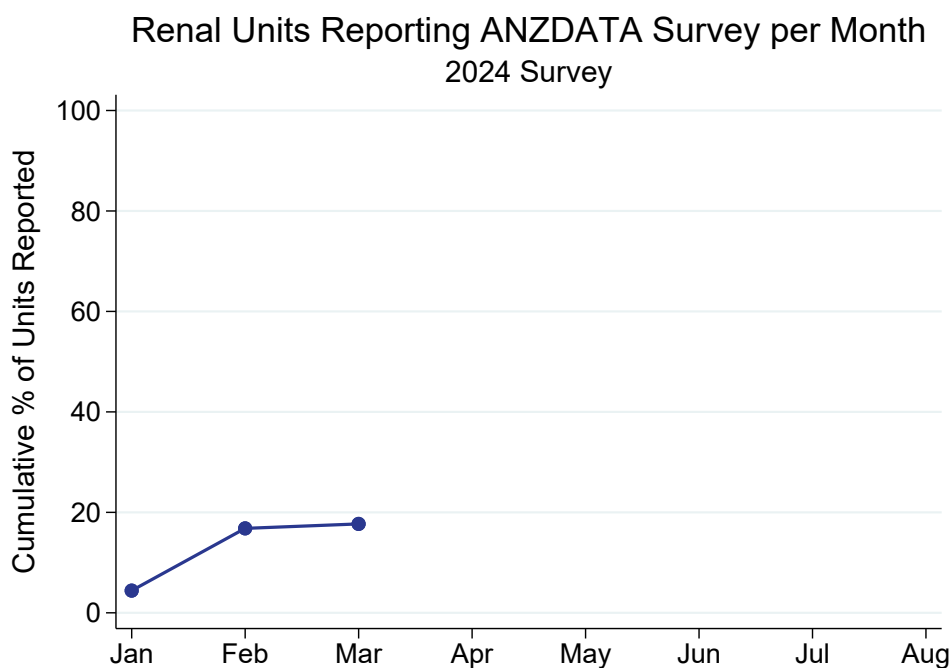
3.2 Paediatric

This table presents the numbers of patients aged ≥ 2 years who have received kidney replacement therapy (KRT) for 6 months, and the percentage who are transplanted or on the wait list within 6 months of KRT start during the observation window by Centre. The 6 month follow-up time means these patients commenced KRT between Jul 2023 and Jun 2024. The number of patients aged < 65 years commencing KRT between Jul 2022 and Jun 2023 is also provided to allow assessment of possible under-reporting. Patients are included in this paediatric report if they were treated at a paediatric hospital. In rare cases when patients younger than 18 years are treated at an adult centre, they are included in the adult report. Any patients 18 years and older treated at a paediatric hospital are included in this report. This quality indicator is presented for Australia only as New Zealand transplant wait listing data is not currently available to ANZDATA.

Centre	Patients	Transplanted or on wait list within 6 months	Neither transplanted nor on wait list	Jul 2022-Jun 2023 Patients	% transplanted or on wait list within 6 months (95 % CI)
Australia	22	10	12	32	45 (24-68)
Queensland	10	6	4	6	60 (26-88)
Child and Adolescent Renal Service	10	6	4	6	60 (26-88)
New South Wales	5	1	4	9	20 (1-72)
Sydney Children's Hospital	2	0	2	3	0 (0-84)
The Children's Hospital at Westmead	3	1	2	6	33 (1-91)
Victoria	5	3	2	10	60 (15-95)
Monash Children's Centre	1	0	1	6	0 (0-98)
Royal Children's Hospital	4	3	1	4	75 (19-99)
South Australia	1	0	1	2	0 (0-98)
Women's and Children's Hospital	1	0	1	2	0 (0-98)
Western Australia	1	0	1	5	0 (0-98)
Perth Children's Hospital	1	0	1	5	0 (0-98)

4 ANZDATA annual data survey timeliness

This figure shows the cumulative percentage of renal units that returned their annual ANZDATA survey each month following 31 December 2024. The date of survey return is the date ANZDATA received notification that annual data submission and data validations have been addressed for data lock. This survey return date identifies a Renal Unit is complete for quality indicator reporting.



This table presents the month of annual ANZDATA survey return by each renal unit following 31 December 2024.

Centre	Month of return
Queensland	
Bundaberg Hospital	
Cairns Hospital	
Cairns Private Hospital	Feb
Chermside Dialysis Centre	
Child and Adolescent Renal Service	Feb
Gold Coast Private Hospital	
Gold Coast University Hospital	
Henry Dalziel Dialysis Clinic - Greenslopes	
Hervey Bay Hospital	
Ipswich Hospital	
John Flynn Private Hospital	
Logan Hospital	Feb
Mackay Base Hospital	
Mater Hospital, Brisbane	Feb
Mater Hospital, Townsville	
Morayfield B.Braun Renal Care Centre	
Mount Isa Base Hospital	
Nambour Selangor Private Hospital	Feb
North Lakes Dialysis Centre	
Pindara Renal Unit	
Princess Alexandra Hospital	Feb
Queensland Kidney Transplant Service	Feb
Redlands Hospital	Jan
Rockhampton Hospital	
Royal Brisbane and Women's Hospital	
St Andrew's Ipswich Private Hospital	
St Andrew's Toowoomba B.Braun's Dialysis Clinic	Jan
Sunshine Coast University Hospital	
Sunshine Coast University Private Hospital	
The Wesley Hospital Brisbane	
Toowoomba Hospital	Feb
Torres & Cape Kidney Health	
Townsville University Hospital	
New South Wales	
Bathurst Base Hospital	
Coffs Harbour Hospital	
Concord Repatriation General Hospital	
Dubbo Base Hospital	
Gosford Hospital	
Gregory Hills B.Braun Renal Care Centre	Feb
John Hunter Hospital	
Lismore Base Hospital	
Liverpool Private Dialysis Centre	
Manning Rural Hospital	
Mater Hospital, North Sydney	
Mayo Private Hospital	Feb
Nepean Hospital	
Newcastle Dialysis Centre	

continued on next page

continued from previous page

Centre	Month of return
Orange Health Service	
Port Macquarie Base Hospital	
Port Macquarie Private Hospital	
Royal North Shore Hospital	
Royal Prince Alfred Hospital	
South West Sydney Renal Service	
St George Hospital	
St Vincent's Hospital Sydney	
St Vincent's Lismore Private Dialysis Centre	
Sydney Adventist Hospital	Feb
Sydney Children's Hospital	Feb
Tamworth Hospital	
The Children's Hospital at Westmead	
The Prince of Wales Hospital	
Tweed Valley Hospital	
Wagga Wagga Base Hospital	
Westmead Hospital	
Wollongong Hospital	
Australian Capital Territory	
Access Nephrology	
Canberra Hospital	
Victoria	
Alfred Hospital	
Austin Hospital	
Bendigo Hospital	
Diamond Valley B.Braun Renal Care Centre	
Eastern Health Integrated Renal Services	
Epworth Eastern Hospital	Jan
Epworth Geelong Hospital	
Epworth Richmond Hospital	Mar
Forest Hill Dialysis Centre	
Malvern Dialysis Centre	Jan
Monash Children's Centre	Jan
Monash Medical Centre	
North Melbourne B.Braun Renal Care Centre	
Northern Health Service Melbourne	
Peninsula Health Renal Services	
Royal Children's Hospital	
South Eastern Private Hospital Dialysis Centre	
St Vincent's Hospital Melbourne	
Sunshine Private Dialysis Centre Fresenius	
The Royal Melbourne Hospital	
University Hospital Geelong Barwon Health	
Western Health Service	
Tasmania	
Launceston General Hospital	
Royal Hobart Hospital	
South Australia	

continued on next page

continued from previous page

Centre	Month of return
Central Northern Adelaide Renal Service	
Flinders Medical Centre	
Women's and Children's Hospital	
Northern Territory	
Alice Springs Hospital	
Royal Darwin Hospital	
Western Australia	
Fiona Stanley Hospital	
Perth Children's Hospital	
Royal Perth Hospital	
Sir Charles Gairdner Hospital	
New Zealand	
Auckland City Hospital	
Bay of Plenty Renal Unit	
Christchurch Hospital	
Dunedin Hospital	
Hawkes Bay Hospital	
Middlemore Hospital	
Palmerston North Hospital	
Starship Children's Hospital	Feb
Taranaki Hospital	Feb
Waikato Hospital	
Waitemata Renal Service	
Wellington Regional Hospital	
Whangarei Hospital	

5 Kidney Replacement Therapy (KRT) Modality

5.1 Incident Modality

5.1.1 Adult

This table presents the numbers (N) of incident kidney replacement therapy (KRT) patients during the observation window by modality at commencement and centre. Modality is categorised as pre-emptive kidney transplant (TX), peritoneal dialysis (PD), home haemodialysis (including commencing training) and community house haemodialysis (HHD*) and facility haemodialysis (FacHD). Also presented are the percentages (%) of each modality out of the total incident KRT cohort. The number of incident patients for 2023 from the analysis database is also provided to allow assessment of possible under-reporting. Patients are excluded from this adult report if they were treated at a paediatric hospital. In rare cases when patients younger than 18 years are treated at an adult centre, they are included in this adult report. Any patients 18 years and older treated at a paediatric hospital are excluded from this report.

Centre	N KRT	N TX	% TX	N PD	% PD	N HHD*	% HHD*	N FacHD	% FacHD	2023 N KRT
Australia	3384	90	3	850	25	54	2	2390	71	3392
Queensland	708	9	1	158	22	12	2	529	75	719
Bundaberg Hospital	23	0	0	3	13	0	0	20	87	14
Cairns Hospital	74	0	0	10	14	3	4	61	82	63
Cairns Private Hospital	4	0	0	0	0	0	0	4	100	2
Chermside Dialysis Centre	6	0	0	0	0	0	0	6	100	15
Gold Coast Private Hospital	7	0	0	1	14	0	0	6	86	12
Gold Coast University Hospital	57	1	2	10	18	3	5	43	75	49
Henry Dalziel Dialysis Clinic - Greenslopes	26	0	0	0	0	0	0	26	100	38
Hervey Bay Hospital	17	0	0	6	35	0	0	11	65	18
Ipswich Hospital	35	0	0	9	26	0	0	26	74	42
John Flynn Private Hospital	4	0	0	0	0	0	0	4	100	12
Mackay Base Hospital	15	0	0	3	20	0	0	12	80	26
Mater Hospital, Brisbane	12	0	0	0	0	0	0	12	100	12
Mater Hospital, Townsville	5	0	0	0	0	0	0	5	100	13
Metro South Kidney and Transplant Services	138	5	4	55	40	6	4	72	52	122
Logan Hospital	55	1	2	24	44	0	0	30	55	34
Princess Alexandra Hospital	76	4	5	31	41	6	8	35	46	85
Redlands Hospital	7	0	0	0	0	0	0	7	100	3
Morayfield B.Braun Renal Care Centre	1	0	0	0	0	0	0	1	100	1
Nambour Selangor Private Hospital	2	0	0	0	0	0	0	2	100	0
North Lakes Dialysis Centre	10	0	0	0	0	0	0	10	100	7

continued on next page

continued from previous page

Centre	N KRT	N TX	% TX	N PD	% PD	N HHD*	% HHD*	N FacHD	% FacHD	2023 N KRT
Pindara Renal Unit	5	0	0	0	0	0	0	5	100	7
Queensland Kidney Transplant Service	1	1	100	0	0	0	0	0	0	0
Rockhampton Hospital	18	0	0	0	0	0	0	18	100	14
Royal Brisbane and Women's Hospital	73	1	1	29	40	0	0	43	59	58
St Andrew's Ipswich Private Hospital	10	0	0	0	0	0	0	10	100	13
St Andrew's Toowoomba B.Braun's Dialysis Clinic	9	0	0	0	0	0	0	9	100	3
Sunshine Coast University Hospital	31	0	0	9	29	0	0	22	71	46
Sunshine Coast University Private Hospital	4	0	0	0	0	0	0	4	100	4
The Wesley Hospital Brisbane	31	1	3	0	0	0	0	30	97	45
Toowoomba Hospital	28	0	0	11	39	0	0	17	61	38
Torres & Cape Kidney Health	1	0	0	0	0	0	0	1	100	2
Townsville University Hospital	61	0	0	12	20	0	0	49	80	43
New South Wales	950	29	3	255	27	23	2	643	68	947
Bathurst Base Hospital	1	0	0	0	0	0	0	1	100	3
Coffs Harbour Hospital	8	1	12	0	0	0	0	7	88	19
Concord Repatriation General Hospital	37	1	3	9	24	0	0	27	73	22
Dubbo Base Hospital	22	2	9	3	14	0	0	17	77	16
Gosford Hospital	39	0	0	6	15	0	0	33	85	43
Gregory Hills B.Braun Renal Care Centre	4	0	0	0	0	0	0	4	100	9
John Hunter Hospital	69	2	3	21	30	1	1	45	65	62
Lismore Base Hospital	22	1	5	1	5	0	0	20	91	27
Liverpool Private Dialysis Centre	2	0	0	0	0	0	0	2	100	0
Manning Rural Hospital	11	0	0	2	18	0	0	9	82	9
Mater Hospital, North Sydney	1	0	0	0	0	0	0	1	100	11
Mayo Private Hospital	3	0	0	0	0	0	0	3	100	1
Newcastle Dialysis Centre	2	0	0	0	0	0	0	2	100	5
Orange Health Service	13	0	0	0	0	0	0	13	100	16
Port Macquarie Base Hospital	18	1	6	0	0	0	0	17	94	16
Royal North Shore Hospital	59	7	12	17	29	3	5	32	54	92
Royal Prince Alfred Hospital	46	5	11	6	13	0	0	35	76	57
South West Sydney Renal Service	185	2	1	62	34	9	5	112	61	119
St George Hospital	41	1	2	15	37	3	7	22	54	42
St Vincent's Hospital Sydney	23	0	0	2	9	0	0	21	91	30

continued on next page

continued from previous page

Centre	N KRT	N TX	% TX	N PD	% PD	N HHD*	% HHD*	N FacHD	% FacHD	2023 N KRT
St Vincent's Lismore Private Dialysis Centre	4	0	0	0	0	0	0	4	100	7
Sydney Adventist Hospital	5	0	0	0	0	0	0	5	100	9
Tamworth Hospital	27	0	0	6	22	0	0	21	78	29
The Prince of Wales Hospital	20	2	10	8	40	0	0	10	50	25
Tweed Valley Hospital	15	0	0	4	27	0	0	11	73	15
Wagga Wagga Base Hospital	35	1	3	4	11	0	0	30	86	31
Western Sydney Renal Health Services	210	3	1	79	38	7	3	121	58	190
Nepean Hospital	53	1	2	10	19	0	0	42	79	34
Westmead Hospital	157	2	1	69	44	7	4	79	50	156
Wollongong Hospital	28	0	0	10	36	0	0	18	64	42
Australian Capital Territory	79	3	4	15	19	2	3	59	75	61
Access Nephrology	10	1	10	0	0	0	0	9	90	10
Canberra Hospital	69	2	3	15	22	2	3	50	72	51
Victoria	870	27	3	247	28	10	1	586	67	855
Alfred Hospital	68	0	0	26	38	0	0	42	62	68
Austin Hospital	62	11	18	9	15	2	3	40	65	80
Bendigo Hospital	34	0	0	15	44	0	0	19	56	29
Eastern Health Integrated Renal Services	57	0	0	16	28	1	2	40	70	54
Epworth Eastern Hospital	10	0	0	0	0	0	0	10	100	11
Epworth Richmond Hospital	13	0	0	0	0	0	0	13	100	11
Forest Hill Dialysis Centre	2	0	0	0	0	0	0	2	100	5
Malvern Dialysis Centre	15	0	0	0	0	0	0	15	100	11
Monash Medical Centre	191	8	4	57	30	6	3	120	63	173
Northern Health Service Melbourne	60	0	0	13	22	0	0	47	78	53
Peninsula Health Renal Services	16	0	0	0	0	0	0	16	100	0
South Eastern Private Hospital Dialysis Centre	4	0	0	0	0	0	0	4	100	3
St Vincent's Hospital Melbourne	61	1	2	32	52	0	0	28	46	71
Sunshine Private Dialysis Centre Fresenius	1	0	0	0	0	0	0	1	100	0
The Royal Melbourne Hospital	127	4	3	40	31	0	0	83	65	125
University Hospital Geelong Barwon Health	39	0	0	10	26	1	3	28	72	59
Western Health Service	110	3	3	29	26	0	0	78	71	95

continued on next page

continued from previous page

Centre	N KRT	N TX	% TX	N PD	% PD	N HHD*	% HHD*	N FacHD	% FacHD	2023 N KRT
Tasmania	63	1	2	16	25	0	0	46	73	49
Launceston General Hospital	29	1	3	10	34	0	0	18	62	29
Royal Hobart Hospital	34	0	0	6	18	0	0	28	82	20
South Australia	231	14	6	45	19	3	1	169	73	243
Central Northern Adelaide Renal Service	178	13	7	33	19	2	1	130	73	188
Flinders Medical Centre	53	1	2	12	23	1	2	39	74	55
Northern Territory	110	2	2	9	8	0	0	99	90	135
Alice Springs Hospital	51	1	2	0	0	0	0	50	98	56
Royal Darwin Hospital	59	1	2	9	15	0	0	49	83	79
Western Australia	373	5	1	105	28	4	1	259	69	383
Fiona Stanley Hospital	134	1	1	36	27	3	2	94	70	145
Royal Perth Hospital	141	1	1	34	24	0	0	106	75	127
Sir Charles Gairdner Hospital	98	3	3	35	36	1	1	59	60	111
New Zealand	717	33	5	191	27	16	2	477	67	720
Auckland City Hospital	80	1	1	18	22	5	6	56	70	71
Bay of Plenty Renal Unit	3	0	0	2	67	0	0	1	33	8
Christchurch Hospital	43	7	16	19	44	0	0	17	40	54
Dunedin Hospital	25	1	4	7	28	0	0	17	68	21
Hawkes Bay Hospital	16	0	0	4	25	0	0	12	75	28
Middlemore Hospital	174	5	3	37	21	10	6	122	70	178
Palmerston North Hospital	22	1	5	2	9	0	0	19	86	35
Taranaki Hospital	13	1	8	7	54	0	0	5	38	16
Waikato Hospital	151	5	3	47	31	1	1	98	65	149
Waitemata Renal Service	73	6	8	5	7	0	0	62	85	60
Wellington Regional Hospital	79	6	8	34	43	0	0	39	49	72
Whangarei Hospital	38	0	0	9	24	0	0	29	76	28

5.1.2 Paediatric

This table presents the numbers (N) of incident kidney replacement therapy (KRT) patients during the observation window by modality at commencement and centre. Modality is categorised as pre-emptive kidney transplant (TX), peritoneal dialysis (PD), home haemodialysis (including commencing training) and community house haemodialysis (HHD*) and facility haemodialysis (FacHD). Also presented are the percentages (%) of each modality out of the total incident KRT cohort. The number of incident patients for 2023 from the analysis database is also provided to allow assessment of possible under-reporting. Patients are included in this paediatric report if they were treated at a paediatric hospital. In rare cases when patients younger than 18 years are treated at an adult centre, they are included in the adult report. Any patients 18 years and older treated at a paediatric hospital are included in this report.

Centre	N KRT	N TX	% TX	N PD	% PD	N HHD*	% HHD*	N FacHD	% FacHD	2023 N KRT
Australia	36	6	17	20	56	0	0	10	28	33
Queensland	9	1	11	7	78	0	0	1	11	8
Child and Adolescent Renal Service	9	1	11	7	78	0	0	1	11	8
New South Wales	7	2	29	2	29	0	0	3	43	7
Sydney Children's Hospital	3	1	33	2	67	0	0	0	0	2
The Children's Hospital at Westmead	4	1	25	0	0	0	0	3	75	5
Victoria	17	2	12	9	53	0	0	6	35	12
Monash Children's Centre	5	0	0	3	60	0	0	2	40	3
Royal Children's Hospital	12	2	17	6	50	0	0	4	33	9
South Australia	2	0	0	2	100	0	0	0	0	2
Women's and Children's Hospital	2	0	0	2	100	0	0	0	0	2
Western Australia	1	1	100	0	0	0	0	0	0	4
Perth Children's Hospital	1	1	100	0	0	0	0	0	0	4
New Zealand	4	1	25	3	75	0	0	0	0	5
Starship Children's Hospital	4	1	25	3	75	0	0	0	0	5

5.2 Prevalent Modality

5.2.1 Adult

This table presents the numbers (N) of prevalent kidney replacement therapy (KRT) patients at the end of the observation window by modality and centre. Modality is categorised as functioning kidney transplant (TX), peritoneal dialysis (PD), hybrid peritoneal dialysis and haemodialysis (Hybrid), home haemodialysis including community house haemodialysis (HHD*) and facility haemodialysis (FacHD). Also presented are the percentages (%) of each modality out of the total prevalent KRT cohort. The number of prevalent patients for 2023 from the analysis database is also provided to allow assessment of possible under-reporting. Patients are excluded from this adult report if they were treated at a paediatric hospital. In rare cases when patients younger than 18 years are treated at an adult centre, they are included in this adult report. Any patients 18 years and older treated at a paediatric hospital are excluded from this report.

Centre	N KRT	N TX	% TX	N PD	% PD	N Hybrid	% Hybrid	N HHD*	% HHD*	N FacHD	% FacHD	2023 N KRT
Australia	29976	13933	46	2653	9	30	0	1031	3	12329	41	28947
Queensland	5922	2639	45	467	8	6	0	209	4	2601	44	5746
Bundaberg Hospital	145	58	40	13	9	0	0	5	3	69	48	140
Cairns Hospital	478	129	27	30	6	4	1	30	6	285	60	475
Cairns Private Hospital	22	0	0	0	0	0	0	0	0	22	100	23
Chermside Dialysis Centre	58	27	47	0	0	0	0	0	0	31	53	67
Gold Coast Private Hospital	30	1	3	0	0	0	0	0	0	29	97	41
Gold Coast University Hospital	512	268	52	44	9	0	0	29	6	171	33	475
Henry Dalziel Dialysis Clinic - Greenslopes	213	106	50	0	0	0	0	0	0	107	50	221
Hervey Bay Hospital	126	42	33	21	17	0	0	1	1	62	49	125
Ipswich Hospital	131	18	14	22	17	0	0	0	0	91	69	120
John Flynn Private Hospital	113	84	74	1	1	0	0	0	0	28	25	109
Mackay Base Hospital	178	70	39	14	8	0	0	0	0	94	53	173
Mater Hospital, Brisbane	153	76	50	0	0	0	0	0	0	77	50	143
Mater Hospital, Townsville	33	0	0	0	0	0	0	0	0	33	100	34
Metro South Kidney and Transplant Services	574	1	0	155	27	0	0	68	12	350	61	616
<i>Logan Hospital</i>	<i>218</i>	<i>0</i>	<i>0</i>	<i>69</i>	<i>32</i>	<i>0</i>	<i>0</i>	<i>0</i>	<i>0</i>	<i>149</i>	<i>68</i>	<i>231</i>
<i>Princess Alexandra Hospital</i>	<i>295</i>	<i>0</i>	<i>0</i>	<i>86</i>	<i>29</i>	<i>0</i>	<i>0</i>	<i>68</i>	<i>23</i>	<i>141</i>	<i>48</i>	<i>300</i>
<i>Redlands Hospital</i>	<i>61</i>	<i>1</i>	<i>2</i>	<i>0</i>	<i>0</i>	<i>0</i>	<i>0</i>	<i>0</i>	<i>0</i>	<i>60</i>	<i>98</i>	<i>85</i>
Morayfield B.Braun Renal Care Centre	15	0	0	0	0	0	0	0	0	15	100	7
Mount Isa Base Hospital	62	10	16	0	0	0	0	0	0	52	84	57
Nambour Selangor Private Hospital	15	0	0	0	0	0	0	0	0	15	100	11
North Lakes Dialysis Centre	41	2	5	0	0	0	0	0	0	39	95	38
Pindara Renal Unit	22	0	0	0	0	0	0	0	0	22	100	23

continued on next page

continued from previous page

Centre	N KRT	N TX	% TX	N PD	% PD	N Hybrid	% Hybrid	N HHD*	% HHD*	N FacHD	% FacHD	2023 N KRT
Queensland Kidney Transplant Service	781	781	100	0	0	0	0	0	0	0	0	710
Rockhampton Hospital	201	76	38	12	6	0	0	2	1	111	55	169
Royal Brisbane and Women's Hospital	621	254	41	65	10	1	0	34	5	267	43	589
St Andrew's Ipswich Private Hospital	47	7	15	0	0	0	0	0	0	40	85	43
St Andrew's Toowoomba B.Braun's Dialysis Clinic	26	0	0	0	0	0	0	0	0	26	100	21
Sunshine Coast University Hospital	416	246	59	12	3	0	0	12	3	146	35	412
Sunshine Coast University Private Hospital	22	0	0	0	0	0	0	0	0	22	100	30
The Wesley Hospital Brisbane	181	125	69	0	0	0	0	0	0	56	31	184
Toowoomba Hospital	272	119	44	38	14	1	0	19	7	95	35	268
Torres & Cape Kidney Health	58	20	34	0	0	0	0	0	0	38	66	61
Townsville University Hospital	376	119	32	40	11	0	0	9	2	208	55	361
New South Wales	8536	3863	45	977	11	10	0	381	4	3305	39	8263
Bathurst Base Hospital	27	12	44	0	0	0	0	0	0	15	56	33
Coffs Harbour Hospital	128	64	50	5	4	0	0	3	2	56	44	137
Concord Repatriation General Hospital	293	120	41	29	10	0	0	14	5	130	44	281
Dubbo Base Hospital	144	63	44	5	3	0	0	4	3	72	50	134
Gosford Hospital	329	123	37	20	6	0	0	7	2	179	54	308
Gregory Hills B.Braun Renal Care Centre	28	0	0	0	0	0	0	0	0	28	100	39
John Hunter Hospital	664	382	58	54	8	2	0	25	4	201	30	635
Lismore Base Hospital	207	96	46	16	8	0	0	17	8	78	38	192
Liverpool Private Dialysis Centre	30	0	0	0	0	0	0	0	0	30	100	28
Manning Rural Hospital	76	15	20	12	16	1	1	3	4	45	59	74
Mater Hospital, North Sydney	72	35	49	0	0	0	0	0	0	37	51	75
Mayo Private Hospital	19	0	0	0	0	0	0	0	0	19	100	18
Newcastle Dialysis Centre	39	0	0	0	0	0	0	0	0	39	100	44
Orange Health Service	112	44	39	5	4	0	0	2	2	61	54	107
Port Macquarie Base Hospital	111	42	38	6	5	0	0	2	2	61	55	113
Port Macquarie Private Hospital	9	0	0	0	0	0	0	0	0	9	100	10
Royal North Shore Hospital	720	379	53	58	8	1	0	43	6	239	33	695
Royal Prince Alfred Hospital	638	440	69	29	5	0	0	36	6	133	21	652
South West Sydney Renal Service	1254	439	35	240	19	0	0	77	6	498	40	1149
St George Hospital	484	256	53	36	7	0	0	22	5	170	35	490
St Vincent's Hospital Sydney	205	110	54	15	7	0	0	21	10	59	29	231

continued on next page

continued from previous page

Centre	N KRT	N TX	% TX	N PD	% PD	N Hybrid	% Hybrid	N HHD*	% HHD*	N FacHD	% FacHD	2023 N KRT
St Vincent's Lismore Private Dialysis Centre	15	0	0	0	0	0	0	0	0	15	100	19
Sydney Adventist Hospital	49	1	2	0	0	0	0	0	0	48	98	48
Tamworth Hospital	171	62	36	13	8	0	0	2	1	94	55	171
The Prince of Wales Hospital	306	181	59	30	10	0	0	8	3	87	28	280
Tweed Valley Hospital	80	12	15	11	14	0	0	0	0	57	71	85
Wagga Wagga Base Hospital	194	53	27	13	7	4	2	7	4	117	60	173
Western Sydney Renal Health Services	1734	762	44	331	19	1	0	79	5	561	32	1637
<i>Nepean Hospital</i>	358	137	38	52	15	0	0	3	1	166	46	325
<i>Westmead Hospital</i>	1376	625	45	279	20	1	0	76	6	395	29	1312
Wollongong Hospital	398	172	43	49	12	1	0	9	2	167	42	405
Australian Capital Territory	633	298	47	49	8	1	0	19	3	266	42	616
Access Nephrology	101	70	69	0	0	0	0	0	0	31	31	98
Canberra Hospital	532	228	43	49	9	1	0	19	4	235	44	518
Victoria	7832	4092	52	636	8	2	0	234	3	2868	37	7540
Alfred Hospital	484	294	61	69	14	1	0	8	2	112	23	563
Austin Hospital	768	509	66	31	4	0	0	29	4	199	26	738
Bendigo Hospital	160	27	17	48	30	0	0	0	0	85	53	151
Diamond Valley B.Braun Renal Care Centre	31	0	0	0	0	0	0	0	0	31	100	38
Eastern Health Integrated Renal Services	482	215	45	43	9	0	0	11	2	213	44	452
Epworth Eastern Hospital	49	0	0	0	0	0	0	0	0	49	100	49
Epworth Geelong Hospital	24	0	0	0	0	0	0	0	0	24	100	22
Epworth Richmond Hospital	31	0	0	0	0	0	0	0	0	31	100	39
Forest Hill Dialysis Centre	33	0	0	0	0	0	0	0	0	33	100	44
Malvern Dialysis Centre	63	0	0	0	0	0	0	0	0	63	100	65
Monash Medical Centre	1880	1105	59	132	7	0	0	79	4	564	30	1790
North Melbourne B.Braun Renal Care Centre	21	0	0	0	0	0	0	0	0	21	100	24
Northern Health Service Melbourne	295	65	22	37	13	0	0	10	3	183	62	272
Peninsula Health Renal Services	95	0	0	0	0	0	0	0	0	95	100	0
South Eastern Private Hospital Dialysis Centre	40	0	0	0	0	0	0	0	0	40	100	25
St Vincent's Hospital Melbourne	612	296	48	75	12	0	0	11	2	230	38	591
Sunshine Private Dialysis Centre Fresenius	30	0	0	0	0	0	0	0	0	30	100	30
The Royal Melbourne Hospital	1802	1229	68	83	5	0	0	34	2	456	25	1778

continued on next page

continued from previous page

Centre	N KRT	N TX	% TX	N PD	% PD	N Hybrid	% Hybrid	N HHD*	% HHD*	N FacHD	% FacHD	2023 N KRT
University Hospital Geelong Barwon Health	356	196	55	23	6	0	0	29	8	108	30	351
Western Health Service	576	156	27	95	16	1	0	23	4	301	52	518
Tasmania	573	337	59	49	9	0	0	7	1	180	31	563
Launceston General Hospital	305	168	55	34	11	0	0	6	2	97	32	305
Royal Hobart Hospital	268	169	63	15	6	0	0	1	0	83	31	258
South Australia	2273	1170	51	165	7	10	0	37	2	891	39	2214
Central Northern Adelaide Renal Service	1774	909	51	128	7	8	0	36	2	693	39	1726
Flinders Medical Centre	499	261	52	37	7	2	0	1	0	198	40	488
Northern Territory	991	169	17	39	4	0	0	34	3	749	76	958
Alice Springs Hospital	477	66	14	1	0	0	0	0	0	410	86	468
Royal Darwin Hospital	514	103	20	38	7	0	0	34	7	339	66	490
Western Australia	3216	1365	42	271	8	1	0	110	3	1469	46	3047
Fiona Stanley Hospital	1267	560	44	96	8	1	0	44	3	566	45	1167
Royal Perth Hospital	940	282	30	72	8	0	0	38	4	548	58	882
Sir Charles Gairdner Hospital	1009	523	52	103	10	0	0	28	3	355	35	998
New Zealand	5800	2421	42	768	13	3	0	399	7	2209	38	5514
Auckland City Hospital	704	281	40	40	6	0	0	58	8	325	46	647
Bay of Plenty Renal Unit	239	97	41	61	26	0	0	0	0	81	34	226
Christchurch Hospital	522	357	68	79	15	0	0	21	4	65	12	501
Dunedin Hospital	220	139	63	26	12	0	0	30	14	25	11	230
Hawkes Bay Hospital	182	89	49	17	9	0	0	8	4	68	37	185
Middlemore Hospital	1174	297	25	150	13	0	0	99	8	628	53	1088
Palmerston North Hospital	302	108	36	28	9	2	1	27	9	137	45	296
Taranaki Hospital	108	55	51	19	18	0	0	6	6	28	26	112
Waikato Hospital	743	242	33	163	22	1	0	76	10	261	35	693
Waitemata Renal Service	641	292	46	38	6	0	0	33	5	278	43	608
Wellington Regional Hospital	688	351	51	118	17	0	0	24	3	195	28	656
Whangarei Hospital	277	113	41	29	10	0	0	17	6	118	43	272

5.2.2 Paediatric

This table presents the numbers (N) of prevalent kidney replacement therapy (KRT) patients at the end of the observation window by modality and centre. Modality is categorised as functioning kidney transplant (TX), peritoneal dialysis (PD), hybrid peritoneal dialysis and haemodialysis (Hybrid), home haemodialysis including community house haemodialysis (HHD*) and facility haemodialysis (FacHD). Also presented are the percentages (%) of each modality out of the total prevalent KRT cohort. The number of prevalent patients for 2023 from the analysis database is also provided to allow assessment of possible under-reporting. Patients are included in this paediatric report if they were treated at a paediatric hospital. In rare cases when patients younger than 18 years are treated at an adult centre, they are included in the adult report. Any patients 18 years and older treated at a paediatric hospital are included in this report.

Centre	N KRT	N TX	% TX	N PD	% PD	N Hybrid	% Hybrid	N HHD*	% HHD*	N FacHD	% FacHD	2023 N KRT
Australia	324	264	81	43	13	1	0	0	0	16	5	324
Queensland	77	62	81	15	19	0	0	0	0	0	0	80
Child and Adolescent Renal Service	77	62	81	15	19	0	0	0	0	0	0	80
New South Wales	98	90	92	6	6	0	0	0	0	2	2	100
Sydney Children's Hospital	25	20	80	4	16	0	0	0	0	1	4	24
The Children's Hospital at Westmead	73	70	96	2	3	0	0	0	0	1	1	76
Victoria	107	78	73	17	16	1	1	0	0	11	10	97
Monash Children's Centre	32	19	59	6	19	1	3	0	0	6	19	26
Royal Children's Hospital	75	59	79	11	15	0	0	0	0	5	7	71
South Australia	18	15	83	2	11	0	0	0	0	1	6	18
Women's and Children's Hospital	18	15	83	2	11	0	0	0	0	1	6	18
Western Australia	24	19	79	3	12	0	0	0	0	2	8	29
Perth Children's Hospital	24	19	79	3	12	0	0	0	0	2	8	29
New Zealand	57	50	88	5	9	0	0	0	0	2	4	58
Starship Children's Hospital	57	50	88	5	9	0	0	0	0	2	4	58