

Quality Indicators

Annual Report

01 January 2023 - 31 December 2023

Analysis Database

PUBLISHED 2 October 2024

The release of the Quality Indicator report is now an ANZDATA/ANZSN co-badged report. This information is provided as it is reported to ANZDATA. The reporting arrangements provide additional information to units on quality indicators. Units should use these data to monitor clinical practice and outcomes.

Contents

1	Incidence of Peritonitis in Patients Treated with Peritoneal Dialysis	2
1.1	Adult	2
1.2	Paediatric	6
2	Dialysis Access Planning at Commencement of Dialysis	7
2.1	All Dialysis Access Planning	7
2.1.1	Adult	7
2.1.2	Paediatric	13
2.2	Vascular Access at First Haemodialysis	14
2.2.1	Adult	14
2.2.2	Paediatric	19
2.3	HD Vascular Access Planning	20
2.3.1	Adult	20
2.3.2	Paediatric	25
2.4	PD Catheter Planning	26
2.4.1	Adult	26
2.4.2	Paediatric	30
3	Transplantation Wait Listing	31
3.1	Adult	31
3.2	Paediatric	36
4	ANZDATA annual data survey timeliness	37
5	Kidney Replacement Therapy (KRT) Modality	41
5.1	Incident Modality	41
5.1.1	Adult	41
5.1.2	Paediatric	45
5.2	Prevalent Modality	46
5.2.1	Adult	46
5.2.2	Paediatric	50

1 Incidence of Peritonitis in Patients Treated with Peritoneal Dialysis

1.1 Adult

This table presents the total number of peritonitis episodes and patient exposure in years by Centre. Patient totals, exposure and peritonitis episodes were determined using the hospital at which the patient was receiving treatment at the time. So, if a patient transferred units during the observation period, the subsequent exposure and peritonitis episodes were allocated to the new unit. Months per episode (PM per Episode) is also reported. This should be interpreted as the average number of months between episodes of peritonitis; it can not be calculated if the peritonitis rate is zero. Patients are excluded from this adult report if they were treated at a paediatric hospital. In rare cases when patients younger than 18 years are treated at an adult centre, they are included in this adult report. Any patients 18 years and older treated at a paediatric hospital are excluded from this report. This quality indicator is presented for Australia only as New Zealand peritonitis episode data is reported through the New Zealand Peritoneal Dialysis Registry. Note that the 2022 International Society for Peritoneal Dialysis peritonitis guideline has a target that the overall peritonitis rate should be no more than 0.40 episodes per year at risk.

Centre	PD Patients	No of Episodes	Person Years	Rate (95% CI)	PM per Episode (95% CI)
Australia	3841	727	2631.12	0.28 (0.26-0.30)	43.43 (40.38-46.77)
Queensland	706	149	481.83	0.31 (0.26-0.36)	38.81 (33.05-45.88)
Bundaberg Hospital	16	7	10.98	0.64 (0.26-1.31)	18.83 (9.14-46.82)
Cairns Hospital	55	20	38.09	0.53 (0.32-0.81)	22.86 (14.80-37.42)
Gold Coast University Hospital	69	7	45.90	0.15 (0.06-0.31)	78.68 (38.19-195.70)
Hervey Bay Hospital	24	7	17.06	0.41 (0.16-0.85)	29.25 (14.20-72.75)
Ipswich Hospital	23	6	13.75	0.44 (0.16-0.95)	27.50 (12.64-74.95)
Mackay Base Hospital	23	2	12.44	0.16 (0.02-0.58)	74.61 (20.65-616.09)
Princess Alexandra Hospital	229	50	157.31	0.32 (0.24-0.42)	37.75 (28.64-50.87)
Rockhampton Hospital	18	1	14.53	0.07 (0.00-0.38)	174.36 (31.29-6886.75)
Royal Brisbane and Women's Hospital	108	13	75.56	0.17 (0.09-0.29)	69.74 (40.79-130.99)
Sunshine Coast University Hospital	23	3	12.77	0.23 (0.05-0.69)	51.07 (17.47-247.63)
Toowoomba Hospital	54	15	36.73	0.41 (0.23-0.67)	29.38 (17.82-52.50)
Townsville University Hospital	64	18	46.72	0.39 (0.23-0.61)	31.14 (19.71-52.55)
New South Wales	1385	284	992.13	0.29 (0.25-0.32)	41.92 (37.32-47.26)
Coffs Harbour Hospital	4	0	2.48	0.00 (0.00-1.49)	. (8.07-.)
Concord Repatriation General Hospital	54	12	37.21	0.32 (0.17-0.56)	37.21 (21.30-72.01)
Dubbo Base Hospital	13	2	10.45	0.19 (0.02-0.69)	62.70 (17.36-517.75)
Gosford Hospital	31	2	21.56	0.09 (0.01-0.34)	129.38 (35.82-1068.33)
John Hunter Hospital	86	26	50.58	0.51 (0.34-0.75)	23.34 (15.93-35.73)

continued on next page

continued from previous page

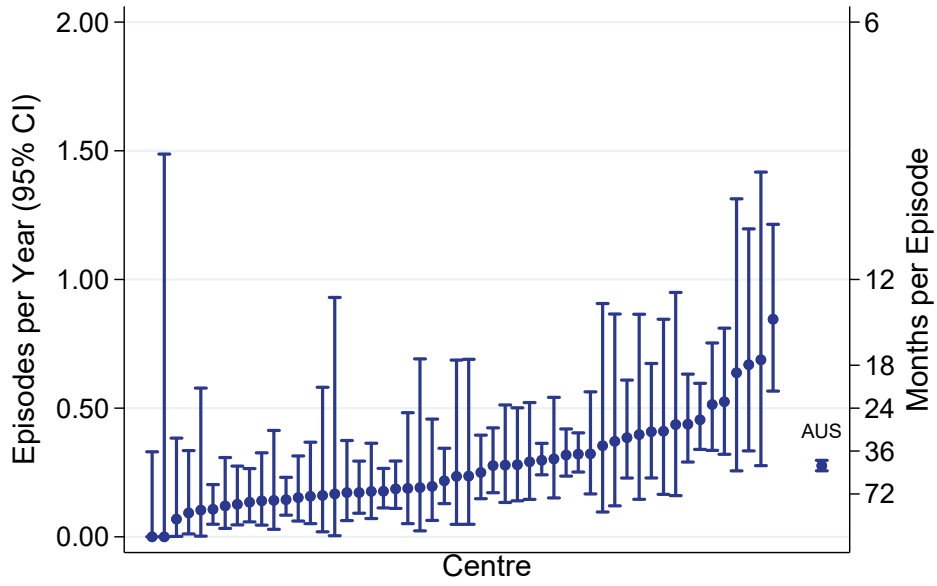
Centre	PD Patients	No of Episodes	Person Years	Rate (95% CI)	PM per Episode (95% CI)
Lismore Base Hospital	24	11	16.45	0.67 (0.33-1.20)	17.94 (10.03-35.95)
Manning Rural Hospital	17	1	9.64	0.10 (0.00-0.58)	115.68 (20.76-4569.10)
Orange Health Service	17	0	11.16	0.00 (0.00-0.33)	. (36.32-.)
Port Macquarie Base Hospital	16	7	10.18	0.69 (0.28-1.42)	17.45 (8.47-43.39)
Royal North Shore Hospital	81	8	59.44	0.13 (0.06-0.27)	89.15 (45.25-206.50)
Royal Prince Alfred Hospital	56	11	37.73	0.29 (0.15-0.52)	41.16 (23.00-82.45)
South West Sydney Renal Service	302	73	227.26	0.32 (0.25-0.40)	37.36 (29.71-47.66)
St George Hospital	63	7	39.67	0.18 (0.07-0.36)	68.00 (33.01-169.14)
St Vincent's Hospital Sydney	29	3	21.21	0.14 (0.03-0.41)	84.83 (29.03-411.35)
Tamworth Hospital	21	5	13.48	0.37 (0.12-0.87)	32.35 (13.86-99.63)
The Prince of Wales Hospital	40	5	25.51	0.20 (0.06-0.46)	61.22 (26.23-188.55)
Tweed Valley Hospital	17	3	12.71	0.24 (0.05-0.69)	50.85 (17.40-246.56)
Wagga Wagga Base Hospital	22	6	15.10	0.40 (0.15-0.86)	30.20 (13.88-82.30)
Western Sydney Renal Services	423	96	322.81	0.30 (0.24-0.36)	40.35 (33.04-49.82)
<i>Nepean Hospital</i>	63	22	50.05	0.44 (0.28-0.67)	27.30 (18.03-43.56)
<i>Westmead Hospital</i>	360	74	272.76	0.27 (0.21-0.34)	44.23 (35.23-56.33)
Wollongong Hospital	69	6	47.51	0.13 (0.05-0.27)	95.01 (43.65-258.91)
Australian Capital Territory	55	11	39.26	0.28 (0.14-0.50)	42.83 (23.94-85.80)
Canberra Hospital	55	11	39.26	0.28 (0.14-0.50)	42.83 (23.94-85.80)
Victoria	918	110	614.66	0.18 (0.15-0.22)	67.05 (55.63-81.59)
Alfred Hospital	108	18	82.69	0.22 (0.13-0.34)	55.12 (34.88-93.01)
Austin Hospital	50	4	33.25	0.12 (0.03-0.31)	99.75 (38.96-366.11)
Bendigo Hospital	51	11	36.32	0.30 (0.15-0.54)	39.63 (22.15-79.38)
Eastern Health Integrated Renal Services	54	6	34.90	0.17 (0.06-0.37)	69.79 (32.07-190.18)
Monash Medical Centre	184	17	117.77	0.14 (0.08-0.23)	83.13 (51.92-142.71)
Northern Health Service Melbourne	54	5	35.75	0.14 (0.05-0.33)	85.79 (36.76-264.21)
St Vincent's Hospital Melbourne	111	18	72.00	0.25 (0.15-0.40)	48.00 (30.37-80.99)
The Royal Melbourne Hospital	150	18	96.58	0.19 (0.11-0.29)	64.39 (40.74-108.64)
University Hospital Geelong Barwon Health	40	4	21.24	0.19 (0.05-0.48)	63.71 (24.88-233.84)
Western Health Service	116	9	84.16	0.11 (0.05-0.20)	112.22 (59.12-245.41)
Tasmania	73	14	47.19	0.30 (0.16-0.50)	40.45 (24.11-73.99)

continued on next page

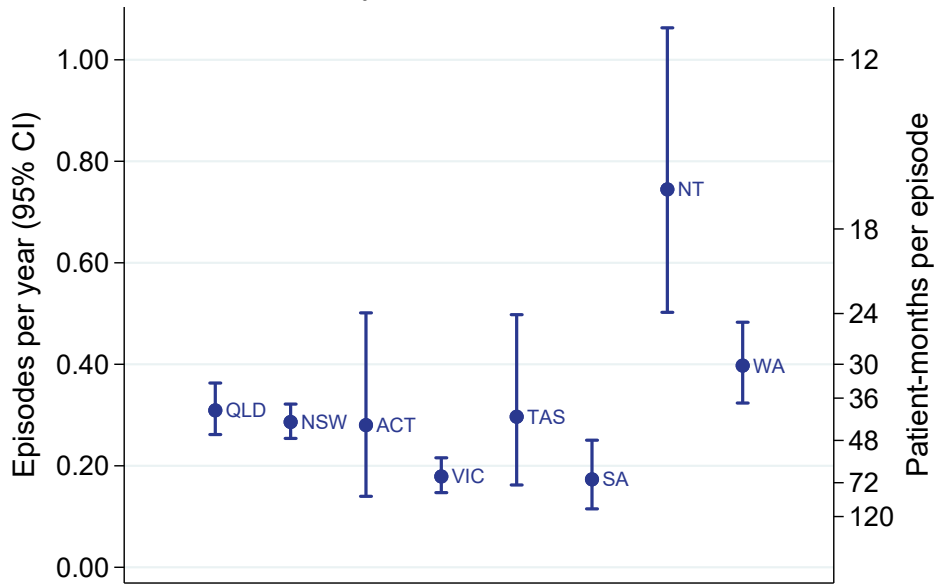
continued from previous page

Centre	PD Patients	No of Episodes	Person Years	Rate (95% CI)	PM per Episode (95% CI)
Launceston General Hospital	53	10	35.89	0.28 (0.13-0.51)	43.07 (23.42-89.82)
Royal Hobart Hospital	20	4	11.30	0.35 (0.10-0.91)	33.90 (13.24-124.41)
South Australia	248	28	161.59	0.17 (0.12-0.25)	69.25 (47.92-104.22)
Central Northern Adelaide Renal Service	197	23	129.85	0.18 (0.11-0.27)	67.75 (45.15-106.87)
Flinders Medical Centre	51	5	31.74	0.16 (0.05-0.37)	76.18 (32.64-234.61)
Northern Territory	74	30	40.29	0.74 (0.50-1.06)	16.12 (11.29-23.89)
Alice Springs Hospital	11	1	5.99	0.17 (0.00-0.93)	71.89 (12.90-2839.31)
Royal Darwin Hospital	63	29	34.30	0.85 (0.57-1.21)	14.19 (9.88-21.19)
Western Australia	382	101	254.17	0.40 (0.32-0.48)	30.20 (24.85-37.08)
Fiona Stanley Hospital	116	21	75.83	0.28 (0.17-0.42)	43.33 (28.35-70.00)
Royal Perth Hospital	95	28	64.01	0.44 (0.29-0.63)	27.43 (18.98-41.29)
Sir Charles Gairdner Hospital	171	52	114.33	0.45 (0.34-0.60)	26.38 (20.12-35.33)

PD Peritonitis Rate, Adults
01 January 2023 - 31 December 2023



PD Peritonitis Rate, Adults
By Jurisdiction, 2023



1.2 Paediatric

This table presents the total number of peritonitis episodes and patient exposure in years by Centre. Patient totals, exposure and peritonitis episodes were determined using the hospital at which the patient was receiving treatment at the time. So, if a patient transferred units during the observation period, the subsequent exposure and peritonitis episodes were allocated to the new unit. Months per episode (PM per Episode) is also reported. This should be interpreted as the average number of months between episodes of peritonitis; it can not be calculated if the peritonitis rate is zero. Patients are included in this paediatric report if they were treated at a paediatric hospital. In rare cases when patients younger than 18 years are treated at an adult centre, they are included in the adult report. Any patients 18 years and older treated at a paediatric hospital are included in this report. Note that the 2022 International Society for Peritoneal Dialysis peritonitis guideline has a target that the overall peritonitis rate should be no more than 0.40 episodes per year at risk.

Centre	PD Patients	No of Episodes	Person Years	Rate (95% CI)	PM per Episode (95% CI)
Australia	79	25	46.26	0.54 (0.35-0.80)	22.21 (15.04-34.31)
Queensland	27	11	13.00	0.85 (0.42-1.51)	14.18 (7.93-28.41)
Child and Adolescent Renal Service	27	11	13.00	0.85 (0.42-1.51)	14.18 (7.93-28.41)
New South Wales	14	2	7.92	0.25 (0.03-0.91)	47.52 (13.16-392.42)
Sydney Children's Hospital	10	2	4.95	0.40 (0.05-1.46)	29.68 (8.22-245.11)
The Children's Hospital at Westmead	4	0	2.97	0.00 (0.00-1.24)	. (9.67-.)
Victoria	27	10	16.69	0.60 (0.29-1.10)	20.03 (10.89-41.77)
Monash Children's Centre	12	3	6.86	0.44 (0.09-1.28)	27.44 (9.39-133.08)
Royal Children's Hospital	15	7	9.83	0.71 (0.29-1.47)	16.85 (8.18-41.92)
South Australia	6	0	5.26	0.00 (0.00-0.70)	. (17.12-.)
Women's and Children's Hospital	6	0	5.26	0.00 (0.00-0.70)	. (17.12-.)
Western Australia	5	2	3.38	0.59 (0.07-2.13)	20.30 (5.62-167.66)
Perth Children's Hospital	5	2	3.38	0.59 (0.07-2.13)	20.30 (5.62-167.66)
New Zealand	11	5	6.64	0.75 (0.24-1.76)	15.94 (6.83-49.09)
Starship Children's Hospital	11	5	6.64	0.75 (0.24-1.76)	15.94 (6.83-49.09)

2 Dialysis Access Planning at Commencement of Dialysis

2.1 All Dialysis Access Planning

2.1.1 Adult

This table presents the numbers of patients beginning haemodialysis or peritoneal dialysis and the percentage starting with a permanent access (an AVF or AVG for haemodialysis and all peritoneal dialysis patients) during the observation window by Centre, where dialysis was the first kidney replacement therapy. Patients are excluded from this adult report if they were treated at a paediatric hospital. In rare cases when patients younger than 18 years are treated at an adult centre, they are included in this adult report. Any patients 18 years and older treated at a paediatric hospital are excluded from this report. Some Centres did not report type of first access for all new HD patients. The percent beginning with a permanent access is based on the number of patients with data available for first access. Finally, the total of Early Referrals (patients seen more than 3 months before first treatment) and the percentage of Early Referrals with a permanent access are also presented.

Centre	Dialysis Patients	AVF or AVG or PD	Vascular Catheter	Missing Access Data	% of AVF or AVG or PD (95 % CI)	Early Referral	% of Early Referrals with AVF or AVG or PD
Australia	3301	1794	1500	7	54 (53-56)	2708	62 (60-64)
Queensland	706	349	354	3	50 (46-53)	587	57 (53-61)
Bundaberg Hospital	14	8	6	0	57 (29-82)	11	64 (31-89)
Cairns Hospital	63	26	37	0	41 (29-54)	46	54 (39-69)
Cairns Private Hospital	2	0	2	0	0 (0-84)	1	0 (0-98)
Chermside Dialysis Centre	14	7	7	0	50 (23-77)	11	64 (31-89)
Gold Coast Private Hospital	12	1	11	0	8 (0-38)	4	25 (1-81)
Gold Coast University Hospital	49	27	22	0	55 (40-69)	40	62 (46-77)
Henry Dalziel Dialysis Clinic - Greenslopes	38	19	19	0	50 (33-67)	38	50 (33-67)
Hervey Bay Hospital	18	14	4	0	78 (52-94)	16	88 (62-98)
Ipswich Hospital	42	17	25	0	40 (26-57)	33	45 (28-64)
John Flynn Private Hospital	10	6	4	0	60 (26-88)	10	60 (26-88)
Mackay Base Hospital	26	18	7	1	72 (51-88)	25	72 (51-88)
Mater Hospital, Brisbane	11	4	7	0	36 (11-69)	7	57 (18-90)
Mater Hospital, Townsville	13	6	7	0	46 (19-75)	11	55 (23-83)
Morayfield B.Braun Renal Care Centre	1	1	0	0	100 (2-100)	1	100 (2-100)
North Lakes Dialysis Centre	7	4	3	0	57 (18-90)	7	57 (18-90)
Pindara Renal Unit	7	5	1	1	83 (36-100)	6	83 (36-100)

continued on next page

continued from previous page

Centre	Dialysis Patients	AVF or AVG or PD	Vascular Catheter	Missing Access Data	% of AVF or AVG or PD (95 % CI)	Early Referral	% of Early Referrals with AVF or AVG or PD
Princess Alexandra Hospital	115	66	49	0	57 (48-67)	105	60 (50-69)
Rockhampton Hospital	14	4	10	0	29 (8-58)	9	33 (7-70)
Royal Brisbane and Women's Hospital	56	31	24	1	56 (42-70)	46	65 (50-79)
St Andrew's Ipswich Private Hospital	13	6	7	0	46 (19-75)	12	50 (21-79)
St Andrew's Toowoomba B.Braun's Dialysis Clinic	3	2	1	0	67 (9-99)	3	67 (9-99)
Sunshine Coast University Hospital	46	20	26	0	43 (29-59)	39	51 (35-68)
Sunshine Coast University Private Hospital	4	4	0	0	100 (40-100)	3	100 (29-100)
The Wesley Hospital Brisbane	45	7	38	0	16 (6-29)	27	26 (11-46)
Toowoomba Hospital	38	27	11	0	71 (54-85)	37	73 (56-86)
Torres & Cape Kidney Health	2	2	0	0	100 (16-100)	2	100 (16-100)
Townsville University Hospital	43	17	26	0	40 (25-56)	37	43 (27-61)
New South Wales	912	516	396	0	57 (53-60)	752	65 (61-68)
Bathurst Base Hospital	3	1	2	0	33 (1-91)	3	33 (1-91)
Coffs Harbour Hospital	17	6	11	0	35 (14-62)	15	40 (16-68)
Concord Repatriation General Hospital	21	14	7	0	67 (43-85)	18	72 (47-90)
Dubbo Base Hospital	15	12	3	0	80 (52-96)	14	86 (57-98)
Gosford Hospital	43	19	24	0	44 (29-60)	28	57 (37-76)
Gregory Hills B.Braun Renal Care Centre	9	1	8	0	11 (0-48)	9	11 (0-48)
John Hunter Hospital	59	36	23	0	61 (47-73)	47	74 (60-86)
Lismore Base Hospital	27	21	6	0	78 (58-91)	24	83 (63-95)
Manning Rural Hospital	9	5	4	0	56 (21-86)	7	71 (29-96)
Mater Hospital, North Sydney	11	5	6	0	45 (17-77)	11	45 (17-77)
Mayo Private Hospital	1	1	0	0	100 (2-100)	0	-
Newcastle Dialysis Centre	5	4	1	0	80 (28-99)	4	100 (40-100)
Orange Health Service	16	12	4	0	75 (48-93)	16	75 (48-93)
Port Macquarie Base Hospital	16	11	5	0	69 (41-89)	12	92 (62-100)
Royal North Shore Hospital	85	44	41	0	52 (41-63)	63	62 (49-74)
Royal Prince Alfred Hospital	47	27	20	0	57 (42-72)	41	63 (47-78)
South West Sydney Renal Service	117	68	49	0	58 (49-67)	112	57 (47-66)
St George Hospital	41	22	19	0	54 (37-69)	31	58 (39-75)

continued on next page

continued from previous page

Centre	Dialysis Patients	AVF or AVG or PD	Vascular Catheter	Missing Access Data	% of AVF or AVG or PD (95 % CI)	Early Referral	% of Early Referrals with AVF or AVG or PD
St Vincent's Hospital Sydney	30	8	22	0	27 (12-46)	16	44 (20-70)
St Vincent's Lismore Private Dialysis Centre	7	5	2	0	71 (29-96)	7	71 (29-96)
Sydney Adventist Hospital	9	5	4	0	56 (21-86)	9	56 (21-86)
Tamworth Hospital	29	18	11	0	62 (42-79)	25	68 (46-85)
The Prince of Wales Hospital	22	14	8	0	64 (41-83)	21	67 (43-85)
Tweed Valley Hospital	15	6	9	0	40 (16-68)	14	36 (13-65)
Wagga Wagga Base Hospital	31	9	22	0	29 (14-48)	17	53 (28-77)
Western Sydney Renal Services	185	117	68	0	63 (56-70)	156	72 (65-79)
<i>Nepean Hospital</i>	34	21	13	0	62 (44-78)	30	70 (51-85)
<i>Westmead Hospital</i>	151	96	55	0	64 (55-71)	126	73 (64-81)
Wollongong Hospital	42	25	17	0	60 (43-74)	32	72 (53-86)
Australian Capital Territory	59	23	36	0	39 (27-53)	48	48 (33-63)
Access Nephrology	9	8	1	0	89 (52-100)	9	89 (52-100)
Canberra Hospital	50	15	35	0	30 (18-45)	39	38 (23-55)
Victoria	832	469	362	1	56 (53-60)	702	62 (59-66)
Alfred Hospital	65	26	39	0	40 (28-53)	55	45 (32-59)
Austin Hospital	73	35	38	0	48 (36-60)	68	50 (38-62)
Bendigo Hospital	29	20	9	0	69 (49-85)	25	68 (46-85)
Diamond Valley B.Braun Renal Care Centre	2	0	2	0	0 (0-84)	2	0 (0-84)
Eastern Health Integrated Renal Services	54	38	16	0	70 (56-82)	46	80 (66-91)
Epworth Eastern Hospital	11	6	5	0	55 (23-83)	9	67 (30-93)
Epworth Geelong Hospital	2	1	1	0	50 (1-99)	2	50 (1-99)
Epworth Richmond Hospital	10	2	8	0	20 (3-56)	9	22 (3-60)
Forest Hill Dialysis Centre	5	5	0	0	100 (48-100)	4	100 (40-100)
Malvern Dialysis Centre	11	4	7	0	36 (11-69)	8	38 (9-76)
Monash Medical Centre	167	108	59	0	65 (57-72)	138	73 (65-80)
North Melbourne B.Braun Renal Care Centre	3	3	0	0	100 (29-100)	3	100 (29-100)
Northern Health Service Melbourne	53	27	25	1	52 (38-66)	46	57 (41-71)
South Eastern Private Hospital Dialysis Centre	3	2	1	0	67 (9-99)	0	-

continued on next page

continued from previous page

Centre	Dialysis Patients	AVF or AVG or PD	Vascular Catheter	Missing Access Data	% of AVF or AVG or PD (95 % CI)	Early Referral	% of Early Referrals with AVF or AVG or PD
St Vincent's Hospital Melbourne	69	37	32	0	54 (41-66)	55	64 (50-76)
The Royal Melbourne Hospital	121	69	52	0	57 (48-66)	103	62 (52-72)
University Hospital Geelong Barwon Health	59	32	27	0	54 (41-67)	47	62 (46-75)
Western Health Service	95	54	41	0	57 (46-67)	82	61 (50-72)
Tasmania	47	32	15	0	68 (53-81)	41	73 (57-86)
Launceston General Hospital	28	21	7	0	75 (55-89)	24	88 (68-97)
Royal Hobart Hospital	19	11	8	0	58 (33-80)	17	53 (28-77)
South Australia	234	141	93	0	60 (54-67)	195	70 (63-77)
Central Northern Adelaide Renal Service	179	112	67	0	63 (55-70)	153	72 (64-79)
Flinders Medical Centre	55	29	26	0	53 (39-66)	42	64 (48-78)
Northern Territory	135	65	70	0	48 (39-57)	119	50 (41-60)
Alice Springs Hospital	56	21	35	0	38 (25-51)	52	38 (25-53)
Royal Darwin Hospital	79	44	35	0	56 (44-67)	67	60 (47-72)
Western Australia	376	199	174	3	53 (48-59)	264	67 (61-72)
Fiona Stanley Hospital	143	72	71	0	50 (42-59)	73	75 (64-85)
Royal Perth Hospital	125	67	58	0	54 (44-63)	111	59 (50-69)
Sir Charles Gairdner Hospital	108	60	45	3	57 (47-67)	80	69 (57-79)
New Zealand	695	278	417	0	40 (36-44)	594	44 (40-48)
Auckland City Hospital	70	14	56	0	20 (11-31)	63	21 (11-33)
Bay of Plenty Renal Unit	7	7	0	0	100 (59-100)	7	100 (59-100)
Christchurch Hospital	51	22	29	0	43 (29-58)	43	51 (35-67)
Dunedin Hospital	17	11	6	0	65 (38-86)	14	79 (49-95)
Hawkes Bay Hospital	27	15	12	0	56 (35-75)	25	60 (39-79)
Middlemore Hospital	178	79	99	0	44 (37-52)	150	48 (40-56)
Palmerston North Hospital	35	8	27	0	23 (10-40)	26	23 (9-44)
Taranaki Hospital	15	12	3	0	80 (52-96)	15	80 (52-96)

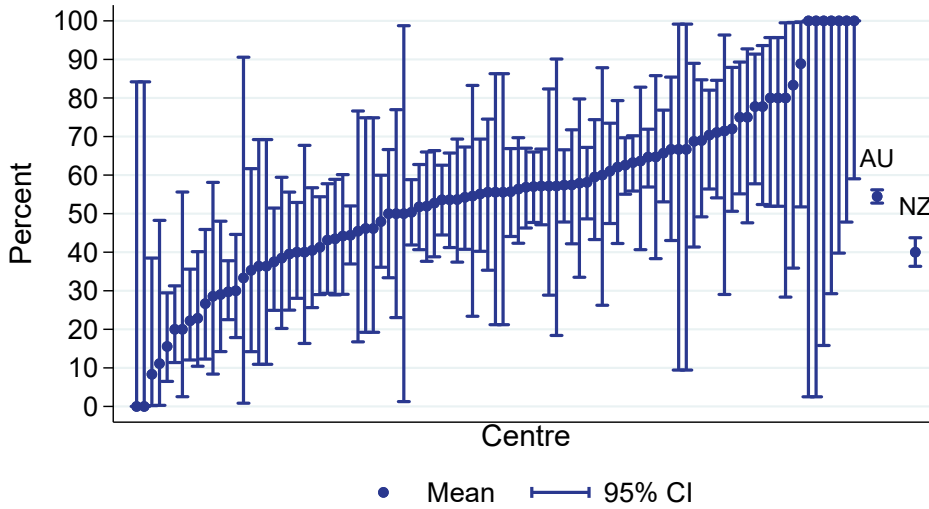
continued on next page

continued from previous page

Centre	Dialysis Patients	AVF or AVG or PD	Vascular Catheter	Missing Access Data	% of AVF or AVG or PD (95 % CI)	Early Referral	% of Early Referrals with AVF or AVG or PD
Waikato Hospital	148	44	104	0	30 (23-38)	129	34 (26-43)
Waitemata Renal Service	54	12	42	0	22 (12-36)	41	22 (11-38)
Wellington Regional Hospital	67	44	23	0	66 (53-77)	60	70 (57-81)
Whangarei Hospital	26	10	16	0	38 (20-59)	21	38 (18-62)

All dialysis access planning (AVF/AVG or PD)
 % of all dialysis starts, Adults

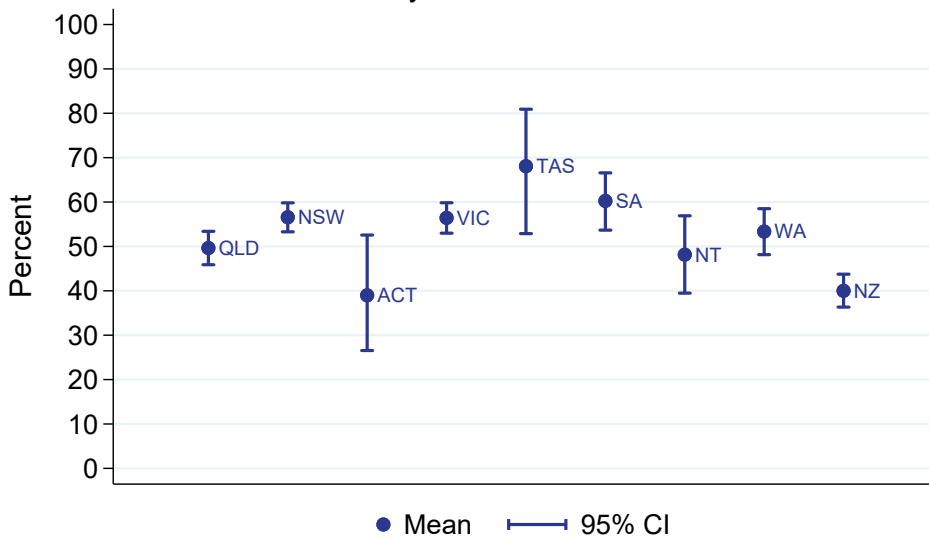
01 January 2023 - 31 December 2023



All adult dialysis starts including late referred patients

All dialysis access planning (AVF/AVG or PD)
 % of all dialysis starts, Adults

By Jurisdiction, 2023



2.1.2 Paediatric

This table presents the numbers of patients beginning haemodialysis or peritoneal dialysis and the percentage starting with a permanent access (an AVF or AVG for haemodialysis and all peritoneal dialysis patients) during the observation window by Centre, where dialysis was the first kidney replacement therapy. Patients are included in this paediatric report if they were treated at a paediatric hospital. In rare cases when patients younger than 18 years are treated at an adult centre, they are included in the adult report. Any patients 18 years and older treated at a paediatric hospital are included in this report. Some Centres did not report type of first access for all new HD patients. The percent beginning with a permanent access is based on the number of patients with data available for first access. Finally, the total of Early Referrals (patients seen more than 3 months before first treatment) and the percentage of Early Referrals with a permanent access are also presented.

Centre	Dialysis Patients	AVF or AVG or PD	Vascular Catheter	Missing Access Data	% of AVF or AVG or PD (95 % CI)	Early Referral	% of Early Referrals with AVF or AVG or PD
Australia	25	19	5	1	79 (58-93)	21	81 (58-95)
Queensland	6	4	2	0	67 (22-96)	5	80 (28-99)
Child and Adolescent Renal Service	6	4	2	0	67 (22-96)	5	80 (28-99)
New South Wales	4	3	0	1	100 (29-100)	2	100 (16-100)
Sydney Children's Hospital	2	2	0	0	100 (16-100)	2	100 (16-100)
The Children's Hospital at Westmead	2	1	0	1	100 (2-100)	0	-
Victoria	9	7	2	0	78 (40-97)	8	75 (35-97)
Monash Children's Centre	2	1	1	0	50 (1-99)	1	0 (0-98)
Royal Children's Hospital	7	6	1	0	86 (42-100)	7	86 (42-100)
South Australia	2	2	0	0	100 (16-100)	2	100 (16-100)
Women's and Children's Hospital	2	2	0	0	100 (16-100)	2	100 (16-100)
Western Australia	4	3	1	0	75 (19-99)	4	75 (19-99)
Perth Children's Hospital	4	3	1	0	75 (19-99)	4	75 (19-99)
New Zealand	5	3	2	0	60 (15-95)	3	67 (9-99)
Starship Children's Hospital	5	3	2	0	60 (15-95)	3	67 (9-99)

2.2 Vascular Access at First Haemodialysis

2.2.1 Adult

This table presents the numbers of patients beginning haemodialysis and the percentage starting with an AVF or AVG during the observation window by Centre, where HD was the first kidney replacement therapy. Patients are excluded from this adult report if they were treated at a paediatric hospital. In rare cases when patients younger than 18 years are treated at an adult centre, they are included in this adult report. Any patients 18 years and older treated at a paediatric hospital are excluded from this report. Some Centres did not report type of first access for all new HD patients. The percent beginning with AVF or AVG is based on the number of patients with data available for first access. Finally, the total of Early Referrals (patients seen more than 3 months before first treatment) and the percentage of Early Referrals with AVF or AVG are also presented.

Centre	HD Patients	AVF or AVG	Vascular Catheter	Missing Access Data	% of AVF or AVG (95 % CI)	Early Referral	% of Early Referrals with AVF or AVG
Australia	2444	937	1500	7	38 (37-40)	1910	46 (44-49)
Queensland	553	196	354	3	36 (32-40)	440	43 (38-48)
Bundaberg Hospital	10	4	6	0	40 (12-74)	7	43 (10-82)
Cairns Hospital	56	19	37	0	34 (22-48)	40	48 (32-64)
Cairns Private Hospital	2	0	2	0	0 (0-84)	1	0 (0-98)
Chermside Dialysis Centre	14	7	7	0	50 (23-77)	11	64 (31-89)
Gold Coast Private Hospital	12	1	11	0	8 (0-38)	4	25 (1-81)
Gold Coast University Hospital	35	13	22	0	37 (21-55)	26	42 (23-63)
Henry Dalziel Dialysis Clinic - Greenslopes	38	19	19	0	50 (33-67)	38	50 (33-67)
Hervey Bay Hospital	12	8	4	0	67 (35-90)	10	80 (44-97)
Ipswich Hospital	32	7	25	0	22 (9-40)	25	28 (12-49)
John Flynn Private Hospital	10	6	4	0	60 (26-88)	10	60 (26-88)
Mackay Base Hospital	18	10	7	1	59 (33-82)	17	59 (33-82)
Mater Hospital, Brisbane	11	4	7	0	36 (11-69)	7	57 (18-90)
Mater Hospital, Townsville	13	6	7	0	46 (19-75)	11	55 (23-83)
Morayfield B.Braun Renal Care Centre	1	1	0	0	100 (2-100)	1	100 (2-100)
North Lakes Dialysis Centre	7	4	3	0	57 (18-90)	7	57 (18-90)
Pindara Renal Unit	7	5	1	1	83 (36-100)	6	83 (36-100)
Princess Alexandra Hospital	64	15	49	0	23 (14-36)	56	25 (14-38)
Rockhampton Hospital	13	3	10	0	23 (5-54)	8	25 (3-65)
Royal Brisbane and Women's Hospital	40	15	24	1	38 (23-55)	30	47 (28-66)
St Andrew's Ipswich Private Hospital	13	6	7	0	46 (19-75)	12	50 (21-79)

continued on next page

continued from previous page

Centre	HD Patients	AVF or AVG	Vascular Catheter	Missing Access Data	% of AVF or AVG (95 % CI)	Early Referral	% of Early Referrals with AVF or AVG
St Andrew's Toowoomba B.Braun's Dialysis Clinic	3	2	1	0	67 (9-99)	3	67 (9-99)
Sunshine Coast University Hospital	41	15	26	0	37 (22-53)	34	44 (27-62)
Sunshine Coast University Private Hospital	4	4	0	0	100 (40-100)	3	100 (29-100)
The Wesley Hospital Brisbane	45	7	38	0	16 (6-29)	27	26 (11-46)
Toowoomba Hospital	18	7	11	0	39 (17-64)	17	41 (18-67)
Torres & Cape Kidney Health	2	2	0	0	100 (16-100)	2	100 (16-100)
Townsville University Hospital	32	6	26	0	19 (7-36)	27	22 (9-42)
New South Wales	628	232	396	0	37 (33-41)	490	46 (41-50)
Bathurst Base Hospital	3	1	2	0	33 (1-91)	3	33 (1-91)
Coffs Harbour Hospital	16	5	11	0	31 (11-59)	14	36 (13-65)
Concord Repatriation General Hospital	12	5	7	0	42 (15-72)	10	50 (19-81)
Dubbo Base Hospital	12	9	3	0	75 (43-95)	11	82 (48-98)
Gosford Hospital	40	16	24	0	40 (25-57)	25	52 (31-72)
Gregory Hills B.Braun Renal Care Centre	9	1	8	0	11 (0-48)	9	11 (0-48)
John Hunter Hospital	35	12	23	0	34 (19-52)	24	50 (29-71)
Lismore Base Hospital	19	13	6	0	68 (43-87)	17	76 (50-93)
Manning Rural Hospital	7	3	4	0	43 (10-82)	5	60 (15-95)
Mater Hospital, North Sydney	11	5	6	0	45 (17-77)	11	45 (17-77)
Mayo Private Hospital	1	1	0	0	100 (2-100)	0	-
Newcastle Dialysis Centre	5	4	1	0	80 (28-99)	4	100 (40-100)
Orange Health Service	11	7	4	0	64 (31-89)	11	64 (31-89)
Port Macquarie Base Hospital	15	10	5	0	67 (38-88)	11	91 (59-100)
Royal North Shore Hospital	59	18	41	0	31 (19-44)	41	41 (26-58)
Royal Prince Alfred Hospital	35	15	20	0	43 (26-61)	29	48 (29-67)
South West Sydney Renal Service	61	12	49	0	20 (11-32)	60	20 (11-32)
St George Hospital	28	9	19	0	32 (16-52)	22	41 (21-64)
St Vincent's Hospital Sydney	25	3	22	0	12 (3-31)	12	25 (5-57)
St Vincent's Lismore Private Dialysis Centre	7	5	2	0	71 (29-96)	7	71 (29-96)
Sydney Adventist Hospital	9	5	4	0	56 (21-86)	9	56 (21-86)
Tamworth Hospital	24	13	11	0	54 (33-74)	20	60 (36-81)
The Prince of Wales Hospital	17	9	8	0	53 (28-77)	16	56 (30-80)

continued on next page

continued from previous page

Centre	HD Patients	AVF or AVG	Vascular Catheter	Missing Access Data	% of AVF or AVG (95 % CI)	Early Referral	% of Early Referrals with AVF or AVG
Tweed Valley Hospital	11	2	9	0	18 (2-52)	11	18 (2-52)
Wagga Wagga Base Hospital	29	7	22	0	24 (10-44)	15	47 (21-73)
Western Sydney Renal Services	101	33	68	0	33 (24-43)	76	43 (32-55)
<i>Nepean Hospital</i>	25	12	13	0	48 (28-69)	21	57 (34-78)
<i>Westmead Hospital</i>	76	21	55	0	28 (18-39)	55	38 (25-52)
Wollongong Hospital	26	9	17	0	35 (17-56)	17	47 (23-72)
Australian Capital Territory	51	15	36	0	29 (17-44)	40	38 (23-54)
Access Nephrology	9	8	1	0	89 (52-100)	9	89 (52-100)
Canberra Hospital	42	7	35	0	17 (7-31)	31	23 (10-41)
Victoria	615	252	362	1	41 (37-45)	504	47 (43-52)
Alfred Hospital	52	13	39	0	25 (14-39)	43	30 (17-46)
Austin Hospital	62	24	38	0	39 (27-52)	57	40 (28-54)
Bendigo Hospital	18	9	9	0	50 (26-74)	16	50 (25-75)
Diamond Valley B.Braun Renal Care Centre	2	0	2	0	0 (0-84)	2	0 (0-84)
Eastern Health Integrated Renal Services	38	22	16	0	58 (41-74)	31	71 (52-86)
Epworth Eastern Hospital	11	6	5	0	55 (23-83)	9	67 (30-93)
Epworth Geelong Hospital	2	1	1	0	50 (1-99)	2	50 (1-99)
Epworth Richmond Hospital	10	2	8	0	20 (3-56)	9	22 (3-60)
Forest Hill Dialysis Centre	5	5	0	0	100 (48-100)	4	100 (40-100)
Malvern Dialysis Centre	11	4	7	0	36 (11-69)	8	38 (9-76)
Monash Medical Centre	117	58	59	0	50 (40-59)	93	60 (50-70)
North Melbourne B.Braun Renal Care Centre	3	3	0	0	100 (29-100)	3	100 (29-100)
Northern Health Service Melbourne	40	14	25	1	36 (21-53)	34	41 (25-59)
South Eastern Private Hospital Dialysis Centre	3	2	1	0	67 (9-99)	0	-
St Vincent's Hospital Melbourne	40	8	32	0	20 (9-36)	27	26 (11-46)
The Royal Melbourne Hospital	88	36	52	0	41 (31-52)	75	48 (36-60)
University Hospital Geelong Barwon Health	45	18	27	0	40 (26-56)	36	50 (33-67)
Western Health Service	68	27	41	0	40 (28-52)	55	42 (29-56)
Tasmania	31	16	15	0	52 (33-70)	26	58 (37-77)

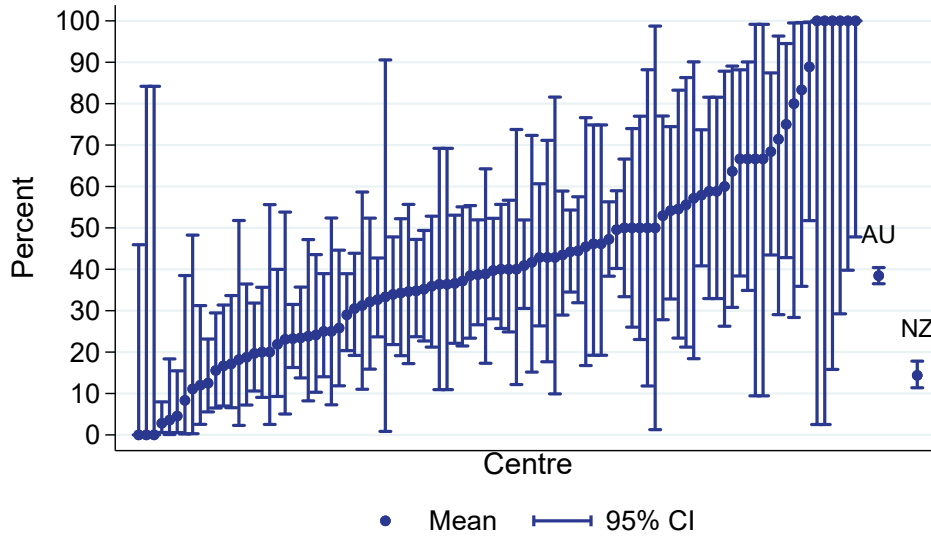
continued on next page

continued from previous page

Centre	HD Patients	AVF or AVG	Vascular Catheter	Missing Access Data	% of AVF or AVG (95 % CI)	Early Referral	% of Early Referrals with AVF or AVG
Launceston General Hospital	17	10	7	0	59 (33-82)	13	77 (46-95)
Royal Hobart Hospital	14	6	8	0	43 (18-71)	13	38 (14-68)
South Australia	173	80	93	0	46 (39-54)	137	58 (49-66)
Central Northern Adelaide Renal Service	127	60	67	0	47 (38-56)	102	58 (48-68)
Flinders Medical Centre	46	20	26	0	43 (29-59)	35	57 (39-74)
Northern Territory	117	47	70	0	40 (31-50)	105	44 (34-54)
Alice Springs Hospital	54	19	35	0	35 (23-49)	50	36 (23-51)
Royal Darwin Hospital	63	28	35	0	44 (32-58)	55	51 (37-65)
Western Australia	276	99	174	3	36 (31-42)	168	48 (40-55)
Fiona Stanley Hospital	100	29	71	0	29 (20-39)	31	42 (25-61)
Royal Perth Hospital	104	46	58	0	44 (34-54)	91	51 (40-61)
Sir Charles Gairdner Hospital	72	24	45	3	35 (24-47)	46	46 (31-61)
New Zealand	487	70	417	0	14 (11-18)	400	17 (13-21)
Auckland City Hospital	64	8	56	0	12 (6-23)	58	14 (6-25)
Christchurch Hospital	35	6	29	0	17 (7-34)	27	22 (9-42)
Dunedin Hospital	6	0	6	0	0 (0-46)	3	0 (0-71)
Hawkes Bay Hospital	16	4	12	0	25 (7-52)	14	29 (8-58)
Middlemore Hospital	129	30	99	0	23 (16-32)	107	27 (19-37)
Palmerston North Hospital	28	1	27	0	4 (0-18)	20	0 (0-17)
Taranaki Hospital	6	3	3	0	50 (12-88)	6	50 (12-88)
Waikato Hospital	107	3	104	0	3 (1-8)	88	3 (1-10)
Waitemata Renal Service	44	2	42	0	5 (1-15)	33	3 (0-16)
Wellington Regional Hospital	31	8	23	0	26 (12-45)	26	31 (14-52)
Whangarei Hospital	21	5	16	0	24 (8-47)	18	28 (10-53)

Vascular access at first HD (AVF/AVG)
% of all HD starts, Adults

01 January 2023 - 31 December 2023



2.2.2 Paediatric

This table presents the numbers of patients beginning haemodialysis and the percentage starting with an AVF or AVG during the observation window by Centre, where HD was the first kidney replacement therapy. Patients are included in this paediatric report if they were treated at a paediatric hospital. In rare cases when patients younger than 18 years are treated at an adult centre, they are included in the adult report. Any patients 18 years and older treated at a paediatric hospital are included in this report. Some Centres did not report type of first access for all new HD patients. The percent beginning with AVF or AVG is based on the number of patients with data available for first access. Finally, the total of Early Referrals (patients seen more than 3 months before first treatment) and the percentage of Early Referrals with AVF or AVG are also presented.

Centre	HD Patients	AVF or AVG	Vascular Catheter	Missing Access Data	% of AVF or AVG (95 % CI)	Early Referral	% of Early Referrals with AVF or AVG
Australia	7	1	5	1	17 (0-64)	4	0 (0-60)
Queensland Child and Adolescent Renal Service	2 2	0 0	2 2	0 0	0 (0-98) 0 (0-84)	1 1	0 (0-98) 0 (0-98)
New South Wales The Children's Hospital at Westmead	2 2	1 1	0 0	1 1	100 (2-100) 100 (2-100)	0 0	– –
Victoria Monash Children's Centre Royal Children's Hospital	2 1 1	0 0 0	2 1 1	0 0 0	0 (0-98) 0 (0-98) 0 (0-98)	2 1 1	0 (0-84) 0 (0-98) 0 (0-98)
Western Australia Perth Children's Hospital	1 1	0 0	1 1	0 0	0 (0-98) 0 (0-98)	1 1	0 (0-98) 0 (0-98)
New Zealand Starship Children's Hospital	2 2	0 0	2 2	0 0	0 (0-98) 0 (0-84)	1 1	0 (0-98) 0 (0-98)

2.3 HD Vascular Access Planning

2.3.1 Adult

This table presents the numbers of patients on haemodialysis at day 90 and the percentage starting haemodialysis with a permanent vascular access (an AVF or AVG) during the observation window by Centre. Modality changes of less than 30 days are ignored for the determination of modality at day 90. Patients are excluded from this adult report if they were treated at a paediatric hospital. In rare cases when patients younger than 18 years are treated at an adult centre, they are included in this adult report. Any patients 18 years and older treated at a paediatric hospital are excluded from this report. Some Centres did not report type of first access for all new HD patients. The percent beginning with a permanent access is based on the number of patients with data available for first access. Finally, the total of Early Referrals (patients seen more than 3 months before first treatment) and the percentage of Early Referrals with a permanent access are also presented.

Centre	HD Patients	AVF or AVG	Vascular Catheter	Missing Access Data	% of AVF or AVG (95 % CI)	Early Referral	% of Early Referrals with AVF or AVG
Australia	2310	938	1365	7	41 (39-43)	1856	48 (45-50)
Queensland	508	199	306	3	39 (35-44)	407	47 (42-52)
Bundaberg Hospital	11	5	6	0	45 (17-77)	9	44 (14-79)
Cairns Hospital	58	23	35	0	40 (27-53)	40	55 (38-71)
Cairns Private Hospital	2	0	2	0	0 (0-84)	1	0 (0-98)
Chermside Dialysis Centre	11	4	7	0	36 (11-69)	9	44 (14-79)
Gold Coast Private Hospital	9	1	8	0	11 (0-48)	3	33 (1-91)
Gold Coast University Hospital	34	13	20	1	39 (23-58)	24	46 (26-67)
Henry Dalziel Dialysis Clinic - Greenslopes	26	14	12	0	54 (33-73)	26	54 (33-73)
Hervey Bay Hospital	14	7	7	0	50 (23-77)	10	70 (35-93)
Ipswich Hospital	27	8	19	0	30 (14-50)	23	35 (16-57)
John Flynn Private Hospital	10	6	4	0	60 (26-88)	10	60 (26-88)
Mackay Base Hospital	19	12	7	0	63 (38-84)	19	63 (38-84)
Mater Hospital, Brisbane	13	6	7	0	46 (19-75)	9	67 (30-93)
Mater Hospital, Townsville	10	5	5	0	50 (19-81)	9	56 (21-86)
Morayfield B.Braun Renal Care Centre	1	1	0	0	100 (2-100)	1	100 (2-100)
North Lakes Dialysis Centre	6	4	2	0	67 (22-96)	5	80 (28-99)
Pindara Renal Unit	8	7	0	1	100 (59-100)	7	100 (59-100)
Princess Alexandra Hospital	54	14	40	0	26 (15-40)	44	30 (17-45)
Rockhampton Hospital	12	4	8	0	33 (10-65)	8	38 (9-76)
Royal Brisbane and Women's Hospital	50	18	32	0	36 (23-51)	37	43 (27-61)

continued on next page

continued from previous page

Centre	HD Patients	AVF or AVG	Vascular Catheter	Missing Access Data	% of AVF or AVG (95 % CI)	Early Referral	% of Early Referrals with AVF or AVG
St Andrew's Ipswich Private Hospital	11	6	5	0	55 (23-83)	10	60 (26-88)
St Andrew's Toowoomba B.Braun's Dialysis Clinic	3	1	2	0	33 (1-91)	2	50 (1-99)
Sunshine Coast University Hospital	32	14	18	0	44 (26-62)	26	54 (33-73)
Sunshine Coast University Private Hospital	7	6	1	0	86 (42-100)	6	83 (36-100)
The Wesley Hospital Brisbane	23	6	17	0	26 (10-48)	17	35 (14-62)
Toowoomba Hospital	18	6	12	0	33 (13-59)	17	35 (14-62)
Torres & Cape Kidney Health	2	2	0	0	100 (16-100)	2	100 (16-100)
Townsville University Hospital	37	6	30	1	17 (6-33)	33	18 (7-35)
New South Wales	603	240	361	2	40 (36-44)	487	47 (43-52)
Bathurst Base Hospital	3	1	2	0	33 (1-91)	3	33 (1-91)
Coffs Harbour Hospital	14	6	8	0	43 (18-71)	12	50 (21-79)
Concord Repatriation General Hospital	11	5	6	0	45 (17-77)	10	50 (19-81)
Dubbo Base Hospital	14	10	4	0	71 (42-92)	12	83 (52-98)
Gosford Hospital	34	18	16	0	53 (35-70)	25	60 (39-79)
Gregory Hills B.Braun Renal Care Centre	8	1	7	0	12 (0-53)	8	12 (0-53)
John Hunter Hospital	43	12	31	0	28 (15-44)	31	39 (22-58)
Lismore Base Hospital	18	10	8	0	56 (31-78)	16	62 (35-85)
Manning Rural Hospital	4	4	0	0	100 (40-100)	3	100 (29-100)
Mater Hospital, North Sydney	8	4	4	0	50 (16-84)	7	43 (10-82)
Mayo Private Hospital	2	1	1	0	50 (1-99)	0	-
Newcastle Dialysis Centre	5	4	1	0	80 (28-99)	5	80 (28-99)
Orange Health Service	11	5	6	0	45 (17-77)	10	50 (19-81)
Port Macquarie Base Hospital	14	10	4	0	71 (42-92)	11	91 (59-100)
Royal North Shore Hospital	58	25	33	0	43 (30-57)	44	55 (39-70)
Royal Prince Alfred Hospital	31	13	17	1	43 (25-63)	25	48 (28-69)
South West Sydney Renal Service	92	18	73	1	20 (12-29)	90	20 (12-30)
St George Hospital	28	10	18	0	36 (19-56)	22	45 (24-68)
St Vincent's Hospital Sydney	21	4	17	0	19 (5-42)	9	44 (14-79)
St Vincent's Lismore Private Dialysis Centre	5	3	2	0	60 (15-95)	5	60 (15-95)
Sydney Adventist Hospital	8	5	3	0	62 (24-91)	8	62 (24-91)
Tamworth Hospital	18	12	6	0	67 (41-87)	18	67 (41-87)

continued on next page

continued from previous page

Centre	HD Patients	AVF or AVG	Vascular Catheter	Missing Access Data	% of AVF or AVG (95 % CI)	Early Referral	% of Early Referrals with AVF or AVG
The Prince of Wales Hospital	14	6	8	0	43 (18-71)	14	43 (18-71)
Tweed Valley Hospital	8	3	5	0	38 (9-76)	8	38 (9-76)
Wagga Wagga Base Hospital	29	8	21	0	28 (13-47)	17	47 (23-72)
Western Sydney Renal Services	83	37	46	0	45 (34-56)	62	56 (43-69)
<i>Nepean Hospital</i>	24	12	12	0	50 (29-71)	16	62 (35-85)
<i>Westmead Hospital</i>	59	25	34	0	42 (30-56)	46	54 (39-69)
Wollongong Hospital	19	5	14	0	26 (9-51)	12	42 (15-72)
Australian Capital Territory	57	18	39	0	32 (20-45)	48	38 (24-53)
Access Nephrology	8	6	2	0	75 (35-97)	8	75 (35-97)
Canberra Hospital	49	12	37	0	24 (13-39)	40	30 (17-47)
Victoria	550	241	308	1	44 (40-48)	467	49 (45-54)
Alfred Hospital	44	11	33	0	25 (13-40)	37	30 (16-47)
Austin Hospital	54	23	31	0	43 (29-57)	49	45 (31-60)
Bendigo Hospital	17	8	9	0	47 (23-72)	16	50 (25-75)
Diamond Valley B.Braun Renal Care Centre	3	1	2	0	33 (1-91)	3	33 (1-91)
Eastern Health Integrated Renal Services	39	20	19	0	51 (35-68)	32	62 (44-79)
Epworth Eastern Hospital	8	4	4	0	50 (16-84)	7	57 (18-90)
Epworth Geelong Hospital	1	0	1	0	0 (0-98)	1	0 (0-98)
Epworth Richmond Hospital	11	3	8	0	27 (6-61)	10	30 (7-65)
Forest Hill Dialysis Centre	4	4	0	0	100 (40-100)	3	100 (29-100)
Malvern Dialysis Centre	10	3	7	0	30 (7-65)	8	25 (3-65)
Monash Medical Centre	108	61	47	0	56 (47-66)	89	66 (55-76)
North Melbourne B.Braun Renal Care Centre	3	3	0	0	100 (29-100)	3	100 (29-100)
Northern Health Service Melbourne	34	14	19	1	42 (25-61)	29	48 (29-67)
South Eastern Private Hospital Dialysis Centre	1	1	0	0	100 (2-100)	0	-
St Vincent's Hospital Melbourne	42	13	29	0	31 (18-47)	31	39 (22-58)
Sunshine Private Dialysis Centre Fresenius	2	2	0	0	100 (16-100)	1	100 (2-100)
The Royal Melbourne Hospital	70	31	39	0	44 (32-57)	64	48 (36-61)
University Hospital Geelong Barwon Health	33	15	18	0	45 (28-64)	28	54 (34-72)
Western Health Service	66	24	42	0	36 (25-49)	56	38 (25-51)

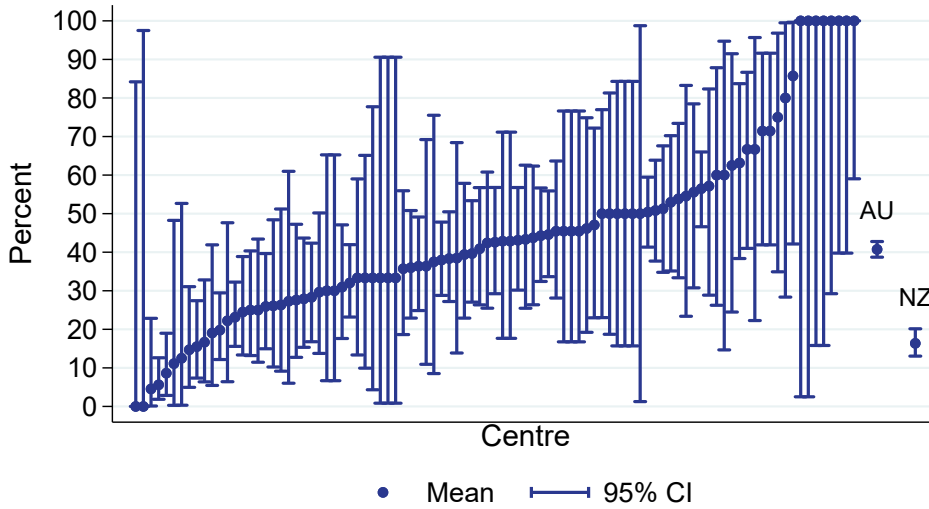
continued on next page

continued from previous page

Centre	HD Patients	AVF or AVG	Vascular Catheter	Missing Access Data	% of AVF or AVG (95 % CI)	Early Referral	% of Early Referrals with AVF or AVG
Tasmania	24	11	13	0	46 (26-67)	20	50 (27-73)
Launceston General Hospital	14	8	6	0	57 (29-82)	11	73 (39-94)
Royal Hobart Hospital	10	3	7	0	30 (7-65)	9	22 (3-60)
South Australia	169	81	88	0	48 (40-56)	138	58 (49-66)
Central Northern Adelaide Renal Service	125	63	62	0	50 (41-59)	105	59 (49-69)
Flinders Medical Centre	44	18	26	0	41 (26-57)	33	55 (36-72)
Northern Territory	114	46	68	0	40 (31-50)	95	46 (36-57)
Alice Springs Hospital	53	15	38	0	28 (17-42)	43	33 (19-49)
Royal Darwin Hospital	61	31	30	0	51 (38-64)	52	58 (43-71)
Western Australia	285	102	182	1	36 (30-42)	194	44 (37-51)
Fiona Stanley Hospital	103	33	70	0	32 (23-42)	45	42 (28-58)
Royal Perth Hospital	108	41	67	0	38 (29-48)	95	42 (32-53)
Sir Charles Gairdner Hospital	74	28	45	1	38 (27-50)	54	48 (34-62)
New Zealand	446	73	373	0	16 (13-20)	367	19 (15-24)
Auckland City Hospital	58	9	49	0	16 (7-27)	54	17 (8-29)
Christchurch Hospital	34	5	29	0	15 (5-31)	26	19 (7-39)
Dunedin Hospital	6	2	4	0	33 (4-78)	5	40 (5-85)
Hawkes Bay Hospital	13	5	8	0	38 (14-68)	12	42 (15-72)
Middlemore Hospital	108	25	83	0	23 (16-32)	96	26 (18-36)
Palmerston North Hospital	22	1	21	0	5 (0-23)	12	0 (0-26)
Taranaki Hospital	8	4	4	0	50 (16-84)	8	50 (16-84)
Waikato Hospital	89	5	84	0	6 (2-13)	70	7 (2-16)
Waitemata Renal Service	58	5	53	0	9 (3-19)	45	9 (2-21)
Wellington Regional Hospital	32	8	24	0	25 (11-43)	24	33 (16-55)
Whangarei Hospital	18	4	14	0	22 (6-48)	15	27 (8-55)

HD vascular access planning (AVF/AVG at first HD)
 % of all HD patients at day 90, Adults

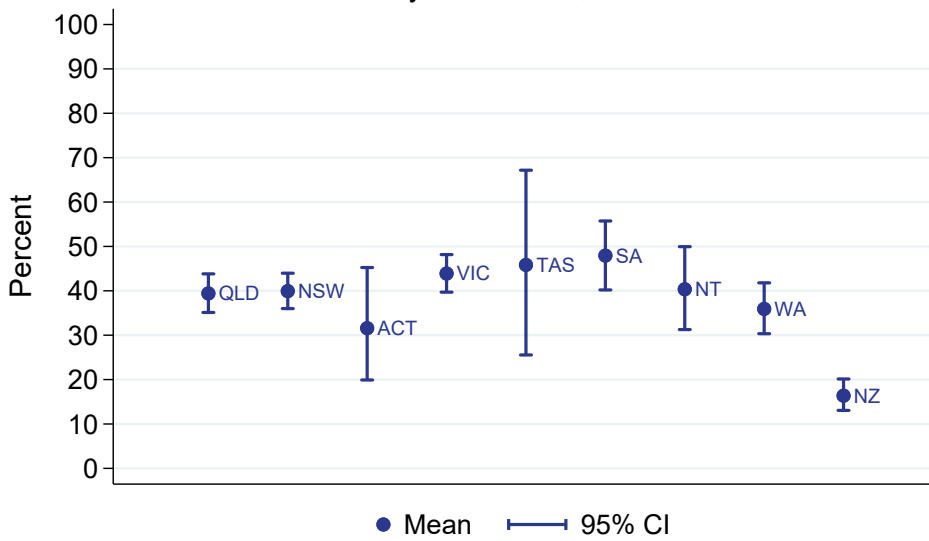
01 January 2023 - 31 December 2023



All HD patients at day 90 including those late referred

HD vascular access planning (AVF/AVG at first HD)
 % of all HD patients at day 90, Adults

By Jurisdiction, 2023



2.3.2 Paediatric

This table presents the numbers of patients on haemodialysis at day 90 and the percentage starting haemodialysis with a permanent vascular access (an AVF or AVG) during the observation window by Centre. Modality changes of less than 30 days are ignored for the determination of modality at day 90. Patients are included in this paediatric report if they were treated at a paediatric hospital. In rare cases when patients younger than 18 years are treated at an adult centre, they are included in the adult report. Any patients 18 years and older treated at a paediatric hospital are included in this report. Finally, the total of Early Referrals (patients seen more than 3 months before first treatment) and the percentage of Early Referrals with a permanent access are also presented.

Centre	HD Patients	AVF or AVG	Vascular Catheter	Missing Access Data	% of AVF or AVG (95 % CI)	Early Referral	% of Early Referrals with AVF or AVG
Australia	3	1	2	0	33 (1-91)	0	–
New South Wales	1	1	0	0	100 (2-100)	0	–
The Children's Hospital at Westmead	1	1	0	0	100 (2-100)	0	–
Victoria	1	0	1	0	0 (0-98)	0	–
Royal Children's Hospital	1	0	1	0	0 (0-98)	0	–
Western Australia	1	0	1	0	0 (0-98)	0	–
Perth Children's Hospital	1	0	1	0	0 (0-98)	0	–

2.4 PD Catheter Planning

2.4.1 Adult

This table presents the numbers of patients on peritoneal dialysis at day 90 and the percentage starting kidney replacement therapy (KRT) with peritoneal dialysis during the observation window by Centre. Modality changes of less than 30 days are ignored for the determination of modality at day 90. Patients are excluded from this adult report if they were treated at a paediatric hospital. In rare cases when patients younger than 18 years are treated at an adult centre, they are included in this adult report. Any patients 18 years and older treated at a paediatric hospital are excluded from this report. Finally, the total of Early Referrals (patients seen more than 3 months before first treatment) and the percentage of Early Referrals starting with PD are also presented.

Centre	90-day PD Patients	Started KRT with PD	Did not start KRT with PD	% starting with PD (95 % CI)	Early Referral	% of Early Referrals starting with PD
Australia	897	796	101	89 (86-91)	808	91 (89-93)
Queensland	152	134	18	88 (82-93)	136	91 (85-95)
Bundaberg Hospital	4	4	0	100 (40-100)	4	100 (40-100)
Cairns Hospital	13	10	3	77 (46-95)	9	89 (52-100)
Gold Coast University Hospital	16	11	5	69 (41-89)	13	85 (55-98)
Hervey Bay Hospital	7	5	2	71 (29-96)	7	71 (29-96)
Ipswich Hospital	11	10	1	91 (59-100)	9	89 (52-100)
Mackay Base Hospital	5	5	0	100 (48-100)	5	100 (48-100)
Princess Alexandra Hospital	44	43	1	98 (88-100)	40	98 (87-100)
Rockhampton Hospital	3	3	0	100 (29-100)	2	100 (16-100)
Royal Brisbane and Women's Hospital	16	14	2	88 (62-98)	15	93 (68-100)
Sunshine Coast University Hospital	4	3	1	75 (19-99)	4	75 (19-99)
Toowoomba Hospital	15	15	0	100 (78-100)	15	100 (78-100)
Townsville University Hospital	14	11	3	79 (49-95)	13	77 (46-95)
New South Wales	314	277	37	88 (84-92)	283	91 (87-94)
Coffs Harbour Hospital	1	1	0	100 (2-100)	1	100 (2-100)
Concord Repatriation General Hospital	9	9	0	100 (66-100)	8	100 (63-100)
Dubbo Base Hospital	3	2	1	67 (9-99)	3	67 (9-99)
Gosford Hospital	8	3	5	38 (9-76)	5	60 (15-95)
John Hunter Hospital	17	17	0	100 (80-100)	16	100 (79-100)
Lismore Base Hospital	5	5	0	100 (48-100)	4	100 (40-100)
Manning Rural Hospital	3	2	1	67 (9-99)	2	100 (16-100)

continued on next page

continued from previous page

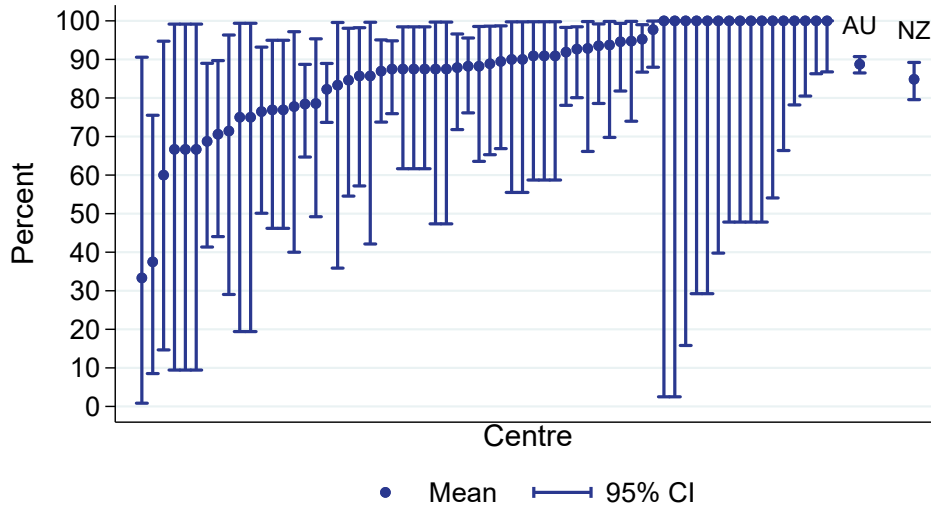
Centre	90-day PD Patients	Started KRT with PD	Did not start KRT with PD	% starting with PD (95 % CI)	Early Referral	% of Early Referrals starting with PD
Orange Health Service	3	3	0	100 (29-100)	3	100 (29-100)
Port Macquarie Base Hospital	1	1	0	100 (2-100)	1	100 (2-100)
Royal North Shore Hospital	25	25	0	100 (86-100)	20	100 (83-100)
Royal Prince Alfred Hospital	14	13	1	93 (66-100)	14	93 (66-100)
South West Sydney Renal Service	63	60	3	95 (87-99)	60	95 (86-99)
St George Hospital	16	15	1	94 (70-100)	13	92 (64-100)
St Vincent's Hospital Sydney	7	6	1	86 (42-100)	7	86 (42-100)
Tamworth Hospital	6	5	1	83 (36-100)	6	83 (36-100)
The Prince of Wales Hospital	3	1	2	33 (1-91)	3	33 (1-91)
Tweed Valley Hospital	5	5	0	100 (48-100)	4	100 (40-100)
Wagga Wagga Base Hospital	2	2	0	100 (16-100)	2	100 (16-100)
Western Sydney Renal Services	107	88	19	82 (74-89)	95	87 (79-93)
<i>Nepean Hospital</i>	12	11	1	92 (62-100)	11	91 (59-100)
<i>Westmead Hospital</i>	95	77	18	81 (72-88)	84	87 (78-93)
Wollongong Hospital	16	14	2	88 (62-98)	16	88 (62-98)
Australian Capital Territory	9	7	2	78 (40-97)	7	100 (59-100)
Canberra Hospital	9	7	2	78 (40-97)	7	100 (59-100)
Victoria	235	210	25	89 (85-93)	209	93 (88-96)
Alfred Hospital	17	15	2	88 (64-99)	14	93 (66-100)
Austin Hospital	13	11	2	85 (55-98)	12	92 (62-100)
Bendigo Hospital	6	6	0	100 (54-100)	4	100 (40-100)
Eastern Health Integrated Renal Services	19	17	2	89 (67-99)	17	94 (71-100)
Monash Medical Centre	56	49	7	88 (76-95)	51	90 (79-97)
Northern Health Service Melbourne	11	10	1	91 (59-100)	10	90 (55-100)
St Vincent's Hospital Melbourne	26	26	0	100 (87-100)	25	100 (86-100)
The Royal Melbourne Hospital	37	34	3	92 (78-98)	32	97 (84-100)
University Hospital Geelong Barwon Health	17	13	4	76 (50-93)	12	83 (52-98)
Western Health Service	33	29	4	88 (72-97)	32	91 (75-98)
Tasmania	15	12	3	80 (52-96)	14	79 (49-95)

continued on next page

continued from previous page

Centre	90-day PD Patients	Started KRT with PD	Did not start KRT with PD	% starting with PD (95 % CI)	Early Referral	% of Early Referrals starting with PD
Launceston General Hospital	10	9	1	90 (55-100)	10	90 (55-100)
Royal Hobart Hospital	5	3	2	60 (15-95)	4	50 (7-93)
South Australia	56	49	7	88 (76-95)	53	87 (75-95)
Central Northern Adelaide Renal Service	46	40	6	87 (74-95)	44	86 (73-95)
Flinders Medical Centre	10	9	1	90 (55-100)	9	89 (52-100)
Northern Territory	19	16	3	84 (60-97)	15	80 (52-96)
Alice Springs Hospital	3	2	1	67 (9-99)	3	67 (9-99)
Royal Darwin Hospital	16	14	2	88 (62-98)	12	83 (52-98)
Western Australia	97	91	6	94 (87-98)	91	97 (91-99)
Fiona Stanley Hospital	37	35	2	95 (82-99)	37	95 (82-99)
Royal Perth Hospital	19	18	1	95 (74-100)	18	100 (81-100)
Sir Charles Gairdner Hospital	41	38	3	93 (80-98)	36	97 (85-100)
New Zealand	231	196	35	85 (80-89)	213	87 (82-91)
Auckland City Hospital	11	10	1	91 (59-100)	9	100 (66-100)
Bay of Plenty Renal Unit	8	7	1	88 (47-100)	8	88 (47-100)
Christchurch Hospital	18	16	2	89 (65-99)	18	89 (65-99)
Dunedin Hospital	17	12	5	71 (44-90)	16	75 (48-93)
Hawkes Bay Hospital	13	10	3	77 (46-95)	12	83 (52-98)
Middlemore Hospital	51	40	11	78 (65-89)	41	83 (68-93)
Palmerston North Hospital	8	7	1	88 (47-100)	8	88 (47-100)
Taranaki Hospital	5	5	0	100 (48-100)	5	100 (48-100)
Waikato Hospital	51	45	6	88 (76-96)	50	90 (78-97)
Waitemata Renal Service	14	12	2	86 (57-98)	14	86 (57-98)
Wellington Regional Hospital	31	29	2	94 (79-99)	30	93 (78-99)
Whangarei Hospital	4	3	1	75 (19-99)	2	50 (1-99)

PD catheter planning (PD at start)
 % of all PD patients at day 90, Adults
 01 January 2023 - 31 December 2023



2.4.2 Paediatric

This table presents the numbers of patients on peritoneal dialysis at day 90 and the percentage starting kidney replacement therapy (KRT) with peritoneal dialysis during the observation window by Centre. Modality changes of less than 30 days are ignored for the determination of modality at day 90. Patients are included in this paediatric report if they were treated at a paediatric hospital. In rare cases when patients younger than 18 years are treated at an adult centre, they are included in the adult report. Any patients 18 years and older treated at a paediatric hospital are included in this report. Finally, the total of Early Referrals (patients seen more than 3 months before first treatment) and the percentage of Early Referrals starting with PD are also presented.

Centre	90-day PD Patients	Started KRT with PD	Did not start KRT with PD	% starting with PD (95 % CI)	Early Referral	% of Early Referrals starting with PD
Australia	19	17	2	89 (67-99)	16	94 (70-100)
Queensland Child and Adolescent Renal Service	7 7	5 5	2 2	71 (29-96) 71 (29-96)	6 6	83 (36-100) 83 (36-100)
New South Wales Sydney Children's Hospital	1 1	1 1	0 0	100 (2-100) 100 (2-100)	1 1	100 (2-100) 100 (2-100)
Victoria Monash Children's Centre Royal Children's Hospital	6 2 4	6 2 4	0 0 0	100 (54-100) 100 (16-100) 100 (40-100)	4 0 4	100 (40-100) – 100 (40-100)
South Australia Women's and Children's Hospital	2 2	2 2	0 0	100 (16-100) 100 (16-100)	2 2	100 (16-100) 100 (16-100)
Western Australia Perth Children's Hospital	3 3	3 3	0 0	100 (29-100) 100 (29-100)	3 3	100 (29-100) 100 (29-100)
New Zealand Starship Children's Hospital	2 2	2 2	0 0	100 (16-100) 100 (16-100)	1 1	100 (2-100) 100 (2-100)

3 Transplantation Wait Listing

3.1 Adult

This table presents the numbers of patients aged <65 years who have received kidney replacement therapy (KRT) for 6 months, and the percentage who are transplanted or on the wait list within 6 months of KRT start during the observation window by Centre. The 6 month follow-up time means these patients commenced KRT between Jul 2022 and Jun 2023. Patients are excluded from this adult report if they were treated at a paediatric hospital. In rare cases when patients younger than 18 years are treated at an adult centre, they are included in this adult report. Any patients 18 years and older treated at a paediatric hospital are excluded from this report. This quality indicator is presented for Australia only as New Zealand transplant wait listing data is not currently available to ANZDATA.

Centre	Patients	Transplanted or on wait list within 6 months	Neither transplanted nor on wait list	% transplanted or on wait list within 6 months (95 % CI)
Australia	1842	287	1555	16 (14-17)
Queensland	392	41	351	10 (8-14)
Bundaberg Hospital	8	1	7	12 (0-53)
Cairns Hospital	47	1	46	2 (0-11)
Chermside Dialysis Centre	2	0	2	0 (0-84)
Gold Coast Private Hospital	1	0	1	0 (0-98)
Gold Coast University Hospital	30	2	28	7 (1-22)
Henry Dalziel Dialysis Clinic - Greenslopes	11	0	11	0 (0-28)
Hervey Bay Hospital	13	2	11	15 (2-45)
Ipswich Hospital	20	1	19	5 (0-25)
John Flynn Private Hospital	5	3	2	60 (15-95)
Mackay Base Hospital	14	0	14	0 (0-23)
Mater Hospital, Brisbane	11	1	10	9 (0-41)
Mater Hospital, Townsville	1	0	1	0 (0-98)
North Lakes Dialysis Centre	1	0	1	0 (0-98)
Pindara Renal Unit	4	0	4	0 (0-60)
Princess Alexandra Hospital	63	12	51	19 (10-31)
Queensland Kidney Transplant Service	1	1	0	100 (2-100)
Rockhampton Hospital	7	1	6	14 (0-58)
Royal Brisbane and Women's Hospital	49	5	44	10 (3-22)
St Andrew's Ipswich Private Hospital	3	0	3	0 (0-71)

continued on next page

continued from previous page

Centre	Patients	Transplanted or on wait list within 6 months	Neither transplanted nor on wait list	% transplanted or on wait list within 6 months (95 % CI)
St Andrew's Toowoomba B.Braun's Dialysis Clinic	1	0	1	0 (0-98)
Sunshine Coast University Hospital	23	8	15	35 (16-57)
The Wesley Hospital Brisbane	6	0	6	0 (0-46)
Toowoomba Hospital	22	2	20	9 (1-29)
Torres & Cape Kidney Health	1	0	1	0 (0-98)
Townsville University Hospital	48	1	47	2 (0-11)
New South Wales	507	86	421	17 (14-21)
Bathurst Base Hospital	5	1	4	20 (1-72)
Coffs Harbour Hospital	5	3	2	60 (15-95)
Concord Repatriation General Hospital	11	3	8	27 (6-61)
Dubbo Base Hospital	9	1	8	11 (0-48)
Gosford Hospital	17	1	16	6 (0-29)
Gregory Hills B.Braun Renal Care Centre	2	0	2	0 (0-84)
John Hunter Hospital	29	5	24	17 (6-36)
Lismore Base Hospital	11	4	7	36 (11-69)
Mater Hospital, North Sydney	3	0	3	0 (0-71)
Newcastle Dialysis Centre	1	0	1	0 (0-98)
Orange Health Service	5	0	5	0 (0-52)
Port Macquarie Base Hospital	6	0	6	0 (0-46)
Royal North Shore Hospital	49	15	34	31 (18-45)
Royal Prince Alfred Hospital	35	15	20	43 (26-61)
South West Sydney Renal Service	90	6	84	7 (2-14)
St George Hospital	29	8	21	28 (13-47)
St Vincent's Hospital Sydney	15	3	12	20 (4-48)
Sydney Adventist Hospital	2	0	2	0 (0-84)
Tamworth Hospital	7	0	7	0 (0-41)
The Prince of Wales Hospital	12	5	7	42 (15-72)
Tweed Valley Hospital	4	0	4	0 (0-60)
Wagga Wagga Base Hospital	18	1	17	6 (0-27)
Western Sydney Renal Services	125	12	113	10 (5-16)
<i>Nepean Hospital</i>	<i>21</i>	<i>1</i>	<i>20</i>	<i>5 (0-24)</i>

continued on next page

continued from previous page

Centre	Patients	Transplanted or on wait list within 6 months	Neither transplanted nor on wait list	% transplanted or on wait list within 6 months (95 % CI)
<i>Westmead Hospital</i>	104	11	93	11 (5-18)
Wollongong Hospital	17	3	14	18 (4-43)
Australian Capital Territory	27	5	22	19 (6-38)
Access Nephrology	2	1	1	50 (1-99)
Canberra Hospital	25	4	21	16 (5-36)
Victoria	421	99	322	24 (20-28)
Alfred Hospital	37	5	32	14 (5-29)
Austin Hospital	35	11	24	31 (17-49)
Bendigo Hospital	12	0	12	0 (0-26)
Eastern Health Integrated Renal Services	19	4	15	21 (6-46)
Epworth Eastern Hospital	3	2	1	67 (9-99)
Epworth Richmond Hospital	2	1	1	50 (1-99)
Forest Hill Dialysis Centre	1	0	1	0 (0-98)
Malvern Dialysis Centre	4	1	3	25 (1-81)
Monash Medical Centre	111	32	79	29 (21-38)
North Melbourne B.Braun Renal Care Centre	1	0	1	0 (0-98)
Northern Health Service Melbourne	24	1	23	4 (0-21)
St Vincent's Hospital Melbourne	36	7	29	19 (8-36)
Sunshine Private Dialysis Centre Fresenius	1	1	0	100 (2-100)
The Royal Melbourne Hospital	67	26	41	39 (27-51)
University Hospital Geelong Barwon Health	16	6	10	38 (15-65)
Western Health Service	52	2	50	4 (0-13)
Tasmania	30	9	21	30 (15-49)
Launceston General Hospital	19	6	13	32 (13-57)
Royal Hobart Hospital	11	3	8	27 (6-61)
South Australia	123	24	99	20 (13-28)
Central Northern Adelaide Renal Service	92	19	73	21 (13-30)
Flinders Medical Centre	31	5	26	16 (5-34)

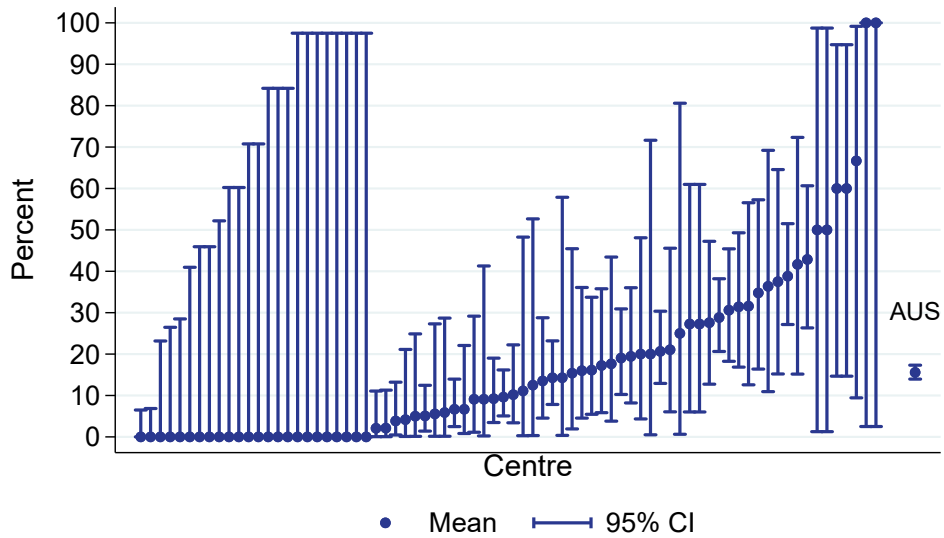
continued on next page

continued from previous page

Centre	Patients	Transplanted or on wait list within 6 months	Neither transplanted nor on wait list	% transplanted or on wait list within 6 months (95 % CI)
Northern Territory	107	0	107	0 (0-3)
Alice Springs Hospital	52	0	52	0 (0-7)
Royal Darwin Hospital	55	0	55	0 (0-6)
Western Australia	235	23	212	10 (6-14)
Fiona Stanley Hospital	91	13	78	14 (8-23)
Royal Perth Hospital	79	4	75	5 (1-12)
Sir Charles Gairdner Hospital	65	6	59	9 (3-19)

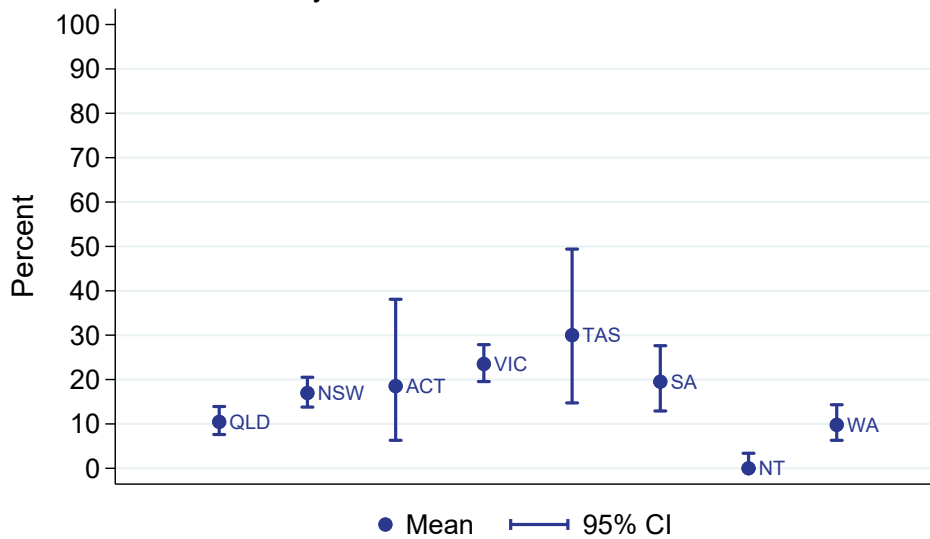
Transplantation wait listing (had a tx or on wl within 6 months)
 % of all new adult patients aged <65 years

Jul 2022 - Jun 2023



Transplantation wait listing (had a tx or on wl within 6 months)
 % of all new adult patients aged <65 years

By Jurisdiction, Jul 2022 - Jun 2023



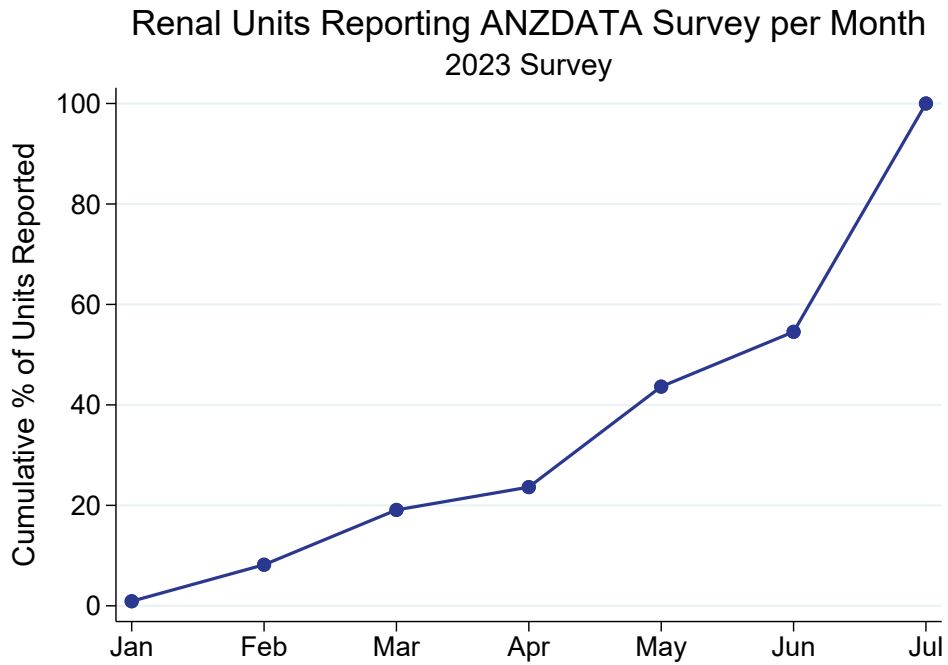
3.2 Paediatric

This table presents the numbers of patients aged ≥ 2 years who have received kidney replacement therapy (KRT) for 6 months, and the percentage who are transplanted or on the wait list within 6 months of KRT start during the observation window by Centre. The 6 month follow-up time means these patients commenced KRT between Jul 2022 and Jun 2023. Patients are included in this paediatric report if they were treated at a paediatric hospital. In rare cases when patients younger than 18 years are treated at an adult centre, they are included in the adult report. Any patients 18 years and older treated at a paediatric hospital are included in this report. This quality indicator is presented for Australia only as New Zealand transplant wait listing data is not currently available to ANZDATA.

Centre	Patients	Transplanted or on wait list within 6 months	Neither transplanted nor on wait list	% transplanted or on wait list within 6 months (95 % CI)
Australia	32	11	21	34 (19-53)
Queensland	6	1	5	17 (0-64)
Child and Adolescent Renal Service	6	1	5	17 (0-64)
New South Wales	9	5	4	56 (21-86)
Sydney Children's Hospital	3	1	2	33 (1-91)
The Children's Hospital at Westmead	6	4	2	67 (22-96)
Victoria	10	4	6	40 (12-74)
Monash Children's Centre	6	3	3	50 (12-88)
Royal Children's Hospital	4	1	3	25 (1-81)
South Australia	2	0	2	0 (0-84)
Women's and Children's Hospital	2	0	2	0 (0-84)
Western Australia	5	1	4	20 (1-72)
Perth Children's Hospital	5	1	4	20 (1-72)

4 ANZDATA annual data survey timeliness

This figure shows the cumulative percentage of renal units that returned their annual ANZDATA survey each month following 31 December 2023. The date of survey return is the date ANZDATA received notification that annual data submission and data validations have been addressed for data lock. This survey return date identifies a Renal Unit is complete for quality indicator reporting.



This table presents the month of annual ANZDATA survey return by each renal unit following 31 December 2023.

Centre	Month of return
Queensland	
Bundaberg Hospital	Mar
Cairns Hospital	May
Cairns Private Hospital	Feb
Chermside Dialysis Centre	Jun
Child and Adolescent Renal Service	May
Gold Coast Private Hospital	Jul
Gold Coast University Hospital	Jul
Henry Dalziel Dialysis Clinic - Greenslopes	Jul
Hervey Bay Hospital	Jun
Ipswich Hospital	May
John Flynn Private Hospital	May
Mackay Base Hospital	Feb
Mater Hospital, Brisbane	Feb
Mater Hospital, Townsville	May
Morayfield B.Braun Renal Care Centre	Jul
Mount Isa Base Hospital	Jul
Nambour Selangor Private Hospital	Mar
North Lakes Dialysis Centre	Jul
Pindara Renal Unit	Apr
Princess Alexandra Hospital	May
Queensland Kidney Transplant Service	May
Rockhampton Hospital	Jul
Royal Brisbane and Women's Hospital	Jul
St Andrew's Ipswich Private Hospital	Jun
St Andrew's Toowoomba B.Braun's Dialysis Clinic	Feb
Sunshine Coast University Hospital	Apr
Sunshine Coast University Private Hospital	May
The Wesley Hospital Brisbane	Jul
Toowoomba Hospital	Feb
Torres & Cape Kidney Health	Jul
Townsville University Hospital	Jul
New South Wales	
Bathurst Base Hospital	May
Coffs Harbour Hospital	Jul
Concord Repatriation General Hospital	Jul
Dubbo Base Hospital	Jul
Gosford Hospital	Jul
Gregory Hills B.Braun Renal Care Centre	May
John Hunter Hospital	Jul
Lismore Base Hospital	May
Liverpool Private Dialysis Centre	Jul
Manning Rural Hospital	Jul
Mater Hospital, North Sydney	May
Mayo Private Hospital	May
Nepean Hospital	Jul
Newcastle Dialysis Centre	Mar
Orange Health Service	Jul
Port Macquarie Base Hospital	May

continued on next page

continued from previous page

Centre	Month of return
Port Macquarie Private Hospital	Feb
Royal North Shore Hospital	Jul
Royal Prince Alfred Hospital	Jul
South West Sydney Renal Service	Jul
St George Hospital	Mar
St Vincent's Hospital Sydney	Jun
St Vincent's Lismore Private Dialysis Centre	Feb
Sydney Adventist Hospital	Apr
Sydney Children's Hospital	Mar
Tamworth Hospital	Apr
The Children's Hospital at Westmead	Jul
The Prince of Wales Hospital	Jul
Tweed Valley Hospital	Jun
Wagga Wagga Base Hospital	Jul
Westmead Hospital	Jul
Wollongong Hospital	Jul
Australian Capital Territory	
Access Nephrology	Jul
Canberra Hospital	Jun
Victoria	
Alfred Hospital	Jul
Austin Hospital	Jul
Bendigo Hospital	Mar
Diamond Valley B.Braun Renal Care Centre	Jun
Eastern Health Integrated Renal Services	Jul
Epworth Eastern Hospital	Feb
Epworth Geelong Hospital	Apr
Epworth Richmond Hospital	Mar
Forest Hill Dialysis Centre	Jul
Malvern Dialysis Centre	Mar
Monash Children's Centre	Mar
Monash Medical Centre	Jul
North Melbourne B.Braun Renal Care Centre	May
Northern Health Service Melbourne	May
Royal Children's Hospital	Mar
South Eastern Private Hospital Dialysis Centre	Jul
St Vincent's Hospital Melbourne	Jul
Sunshine Private Dialysis Centre Fresenius	Jul
The Royal Melbourne Hospital	Jul
University Hospital Geelong Barwon Health	Jul
Western Health Service	Jul
Tasmania	
Launceston General Hospital	May
Royal Hobart Hospital	May
South Australia	
Central Northern Adelaide Renal Service	Jun
Flinders Medical Centre	Mar
Women's and Children's Hospital	May

continued on next page

continued from previous page

Centre	Month of return
Northern Territory	
Alice Springs Hospital	Jul
Royal Darwin Hospital	Jul
Western Australia	
Fiona Stanley Hospital	Jul
Perth Children's Hospital	May
Royal Perth Hospital	Jul
Sir Charles Gairdner Hospital	Jul
New Zealand	
Auckland City Hospital	Jun
Bay of Plenty Renal Unit	Jun
Christchurch Hospital	Jul
Dunedin Hospital	May
Hawkes Bay Hospital	Mar
Middlemore Hospital	Jul
Palmerston North Hospital	Jul
Starship Children's Hospital	Jan
Taranaki Hospital	May
Waikato Hospital	Jul
Waitemata Renal Service	Jul
Wellington Regional Hospital	Jun
Whangarei Hospital	Jun

5 Kidney Replacement Therapy (KRT) Modality

5.1 Incident Modality

5.1.1 Adult

This table presents the numbers (N) of incident kidney replacement therapy (KRT) patients during the observation window by modality at commencement and centre. Modality is categorised as pre-emptive kidney transplant (TX), peritoneal dialysis (PD), home haemodialysis (including commencing training) and community house haemodialysis (HHD*) and facility haemodialysis (FacHD). Also presented are the percentages (%) of each modality out of the total incident KRT cohort. Patients are excluded from this adult report if they were treated at a paediatric hospital. In rare cases when patients younger than 18 years are treated at an adult centre, they are included in this adult report. Any patients 18 years and older treated at a paediatric hospital are excluded from this report.

Centre	N KRT	N TX	% TX	N PD	% PD	N HHD*	% HHD*	N FacHD	% FacHD
Australia	3392	91	3	857	25	52	2	2392	71
Queensland	719	13	2	153	21	10	1	543	76
Bundaberg Hospital	14	0	0	4	29	0	0	10	71
Cairns Hospital	63	0	0	7	11	2	3	54	86
Cairns Private Hospital	2	0	0	0	0	0	0	2	100
Chermside Dialysis Centre	15	1	7	0	0	0	0	14	93
Gold Coast Private Hospital	12	0	0	0	0	0	0	12	100
Gold Coast University Hospital	49	0	0	14	29	2	4	33	67
Henry Dalziel Dialysis Clinic - Greenslopes	38	0	0	0	0	0	0	38	100
Hervey Bay Hospital	18	0	0	6	33	0	0	12	67
Ipswich Hospital	42	0	0	10	24	0	0	32	76
John Flynn Private Hospital	12	2	17	0	0	0	0	10	83
Mackay Base Hospital	26	0	0	8	31	0	0	18	69
Mater Hospital, Brisbane	12	1	8	0	0	0	0	11	92
Mater Hospital, Townsville	13	0	0	0	0	0	0	13	100
Morayfield B.Braun Renal Care Centre	1	0	0	0	0	0	0	1	100
North Lakes Dialysis Centre	7	0	0	0	0	0	0	7	100
Pindara Renal Unit	7	0	0	0	0	0	0	7	100
Princess Alexandra Hospital	122	7	6	51	42	5	4	59	48
Rockhampton Hospital	14	0	0	1	7	0	0	13	93
Royal Brisbane and Women's Hospital	58	2	3	16	28	1	2	39	67
St Andrew's Ipswich Private Hospital	13	0	0	0	0	0	0	13	100
St Andrew's Toowoomba B.Braun's Dialysis Clinic	3	0	0	0	0	0	0	3	100
Sunshine Coast University Hospital	46	0	0	5	11	0	0	41	89

continued on next page

continued from previous page

Centre	N KRT	N TX	% TX	N PD	% PD	N HHD*	% HHD*	N FacHD	% FacHD
Sunshine Coast University Private Hospital	4	0	0	0	0	0	0	4	100
The Wesley Hospital Brisbane	45	0	0	0	0	0	0	45	100
Toowoomba Hospital	38	0	0	20	53	0	0	18	47
Torres & Cape Kidney Health	2	0	0	0	0	0	0	2	100
Townsville University Hospital	43	0	0	11	26	0	0	32	74
New South Wales	947	35	4	284	30	21	2	607	64
Bathurst Base Hospital	3	0	0	0	0	0	0	3	100
Coffs Harbour Hospital	19	2	11	1	5	0	0	16	84
Concord Repatriation General Hospital	22	1	5	9	41	0	0	12	55
Dubbo Base Hospital	16	1	6	3	19	0	0	12	75
Gosford Hospital	43	0	0	3	7	0	0	40	93
Gregory Hills B.Braun Renal Care Centre	9	0	0	0	0	0	0	9	100
John Hunter Hospital	62	3	5	24	39	0	0	35	56
Lismore Base Hospital	27	0	0	8	30	0	0	19	70
Manning Rural Hospital	9	0	0	2	22	0	0	7	78
Mater Hospital, North Sydney	11	0	0	0	0	0	0	11	100
Mayo Private Hospital	1	0	0	0	0	0	0	1	100
Newcastle Dialysis Centre	5	0	0	0	0	0	0	5	100
Orange Health Service	16	0	0	5	31	0	0	11	69
Port Macquarie Base Hospital	16	0	0	1	6	0	0	15	94
Royal North Shore Hospital	92	7	8	26	28	4	4	55	60
Royal Prince Alfred Hospital	57	10	18	12	21	3	5	32	56
South West Sydney Renal Service	119	2	2	56	47	6	5	55	46
St George Hospital	42	1	2	13	31	0	0	28	67
St Vincent's Hospital Sydney	30	0	0	5	17	0	0	25	83
St Vincent's Lismore Private Dialysis Centre	7	0	0	0	0	0	0	7	100
Sydney Adventist Hospital	9	0	0	0	0	0	0	9	100
Tamworth Hospital	29	0	0	5	17	0	0	24	83
The Prince of Wales Hospital	25	3	12	5	20	0	0	17	68
Tweed Valley Hospital	15	0	0	4	27	0	0	11	73
Wagga Wagga Base Hospital	31	0	0	2	6	0	0	29	94
Western Sydney Renal Services	190	5	3	84	44	7	4	94	49
<i>Nepean Hospital</i>	<i>34</i>	<i>0</i>	<i>0</i>	<i>9</i>	<i>26</i>	<i>0</i>	<i>0</i>	<i>25</i>	<i>74</i>
<i>Westmead Hospital</i>	<i>156</i>	<i>5</i>	<i>3</i>	<i>75</i>	<i>48</i>	<i>7</i>	<i>4</i>	<i>69</i>	<i>44</i>

continued on next page

continued from previous page

Centre	N KRT	N TX	% TX	N PD	% PD	N HHD*	% HHD*	N FacHD	% FacHD
Wollongong Hospital	42	0	0	16	38	1	2	25	60
Australian Capital Territory	61	2	3	8	13	3	5	48	79
Access Nephrology	10	1	10	0	0	0	0	9	90
Canberra Hospital	51	1	2	8	16	3	6	39	76
Victoria	855	23	3	217	25	7	1	608	71
Alfred Hospital	68	3	4	13	19	0	0	52	76
Austin Hospital	80	7	9	11	14	1	1	61	76
Bendigo Hospital	29	0	0	11	38	0	0	18	62
Diamond Valley B.Braun Renal Care Centre	2	0	0	0	0	0	0	2	100
Eastern Health Integrated Renal Services	54	0	0	16	30	0	0	38	70
Epworth Eastern Hospital	11	0	0	0	0	0	0	11	100
Epworth Geelong Hospital	2	0	0	0	0	0	0	2	100
Epworth Richmond Hospital	11	1	9	0	0	0	0	10	91
Forest Hill Dialysis Centre	5	0	0	0	0	0	0	5	100
Malvern Dialysis Centre	11	0	0	0	0	0	0	11	100
Monash Medical Centre	173	6	3	50	29	3	2	114	66
North Melbourne B.Braun Renal Care Centre	3	0	0	0	0	0	0	3	100
Northern Health Service Melbourne	53	0	0	13	25	0	0	40	75
South Eastern Private Hospital Dialysis Centre	3	0	0	0	0	0	0	3	100
St Vincent's Hospital Melbourne	71	2	3	29	41	0	0	40	56
The Royal Melbourne Hospital	125	4	3	33	26	3	2	85	68
University Hospital Geelong Barwon Health	59	0	0	14	24	0	0	45	76
Western Health Service	95	0	0	27	28	0	0	68	72
Tasmania	49	2	4	16	33	0	0	31	63
Launceston General Hospital	29	1	3	11	38	0	0	17	59
Royal Hobart Hospital	20	1	5	5	25	0	0	14	70
South Australia	243	9	4	61	25	4	2	169	70
Central Northern Adelaide Renal Service	188	9	5	52	28	4	2	123	65
Flinders Medical Centre	55	0	0	9	16	0	0	46	84
Northern Territory	135	0	0	18	13	0	0	117	87

continued on next page

continued from previous page

Centre	N KRT	N TX	% TX	N PD	% PD	N HHD*	% HHD*	N FacHD	% FacHD
Alice Springs Hospital	56	0	0	2	4	0	0	54	96
Royal Darwin Hospital	79	0	0	16	20	0	0	63	80
Western Australia	383	7	2	100	26	7	2	269	70
Fiona Stanley Hospital	145	2	1	43	30	3	2	97	67
Royal Perth Hospital	127	2	2	21	17	2	2	102	80
Sir Charles Gairdner Hospital	111	3	3	36	32	2	2	70	63
New Zealand	720	25	3	208	29	17	2	470	65
Auckland City Hospital	71	1	1	6	8	6	8	58	82
Bay of Plenty Renal Unit	8	1	12	7	88	0	0	0	0
Christchurch Hospital	54	3	6	16	30	0	0	35	65
Dunedin Hospital	21	4	19	11	52	0	0	6	29
Hawkes Bay Hospital	28	1	4	11	39	0	0	16	57
Middlemore Hospital	178	0	0	49	28	11	6	118	66
Palmerston North Hospital	35	0	0	7	20	0	0	28	80
Taranaki Hospital	16	1	6	9	56	0	0	6	38
Waikato Hospital	149	1	1	41	28	0	0	107	72
Waitemata Renal Service	60	6	10	10	17	0	0	44	73
Wellington Regional Hospital	72	5	7	36	50	0	0	31	43
Whangarei Hospital	28	2	7	5	18	0	0	21	75

5.1.2 Paediatric

This table presents the numbers (N) of incident kidney replacement therapy (KRT) patients during the observation window by modality at commencement and centre. Modality is categorised as pre-emptive kidney transplant (TX), peritoneal dialysis (PD), home haemodialysis (including commencing training) and community house haemodialysis (HHD*) and facility haemodialysis (FacHD). Also presented are the percentages (%) of each modality out of the total incident KRT cohort. Patients are included in this paediatric report if they were treated at a paediatric hospital. In rare cases when patients younger than 18 years are treated at an adult centre, they are included in the adult report. Any patients 18 years and older treated at a paediatric hospital are included in this report.

Centre	N KRT	N TX	% TX	N PD	% PD	N HHD*	% HHD*	N FacHD	% FacHD
Australia	33	8	24	18	55	0	0	7	21
Queensland	8	2	25	4	50	0	0	2	25
Child and Adolescent Renal Service	8	2	25	4	50	0	0	2	25
New South Wales	7	3	43	2	29	0	0	2	29
Sydney Children's Hospital	2	0	0	2	100	0	0	0	0
The Children's Hospital at Westmead	5	3	60	0	0	0	0	2	40
Victoria	12	3	25	7	58	0	0	2	17
Monash Children's Centre	3	1	33	1	33	0	0	1	33
Royal Children's Hospital	9	2	22	6	67	0	0	1	11
South Australia	2	0	0	2	100	0	0	0	0
Women's and Children's Hospital	2	0	0	2	100	0	0	0	0
Western Australia	4	0	0	3	75	0	0	1	25
Perth Children's Hospital	4	0	0	3	75	0	0	1	25
New Zealand	5	0	0	3	60	0	0	2	40
Starship Children's Hospital	5	0	0	3	60	0	0	2	40

5.2 Prevalent Modality

5.2.1 Adult

This table presents the numbers (N) of prevalent kidney replacement therapy (KRT) patients at the end of the observation window by modality and centre. Modality is categorised as functioning kidney transplant (TX), peritoneal dialysis (PD), hybrid peritoneal dialysis and haemodialysis (Hybrid), home haemodialysis including community house haemodialysis (HHD*) and facility haemodialysis (FacHD). Also presented are the percentages (%) of each modality out of the total prevalent KRT cohort. Patients are excluded from this adult report if they were treated at a paediatric hospital. In rare cases when patients younger than 18 years are treated at an adult centre, they are included in this adult report. Any patients 18 years and older treated at a paediatric hospital are excluded from this report. Reporting of hybrid dialysis commenced in 2023, and there may be underreporting as this is a new treatment modality.

Centre	N KRT	N TX	% TX	N PD	% PD	N Hybrid	% Hybrid	N HHD*	% HHD*	N FacHD	% FacHD
Australia	28947	13374	46	2612	9	20	0	1072	4	11869	41
Queensland	5746	2549	44	488	8	1	0	225	4	2483	43
Bundaberg Hospital	140	63	45	13	9	0	0	3	2	61	44
Cairns Hospital	475	128	27	39	8	0	0	32	7	276	58
Cairns Private Hospital	23	0	0	0	0	0	0	0	0	23	100
Chermside Dialysis Centre	67	27	40	0	0	0	0	0	0	40	60
Gold Coast Private Hospital	41	0	0	0	0	0	0	0	0	41	100
Gold Coast University Hospital	475	239	50	47	10	0	0	30	6	159	33
Henry Dalziel Dialysis Clinic - Greenslopes	221	113	51	0	0	0	0	0	0	108	49
Hervey Bay Hospital	125	40	32	19	15	0	0	3	2	63	50
Ipswich Hospital	120	12	10	18	15	0	0	0	0	90	75
John Flynn Private Hospital	109	77	71	0	0	0	0	0	0	32	29
Mackay Base Hospital	173	64	37	15	9	0	0	0	0	94	54
Mater Hospital, Brisbane	143	64	45	0	0	0	0	0	0	79	55
Mater Hospital, Townsville	34	0	0	0	0	0	0	0	0	34	100
Morayfield B.Braun Renal Care Centre	7	0	0	0	0	0	0	0	0	7	100
Mount Isa Base Hospital	57	10	18	0	0	0	0	0	0	47	82
Nambour Selangor Private Hospital	11	0	0	0	0	0	0	0	0	11	100
North Lakes Dialysis Centre	38	0	0	0	0	0	0	0	0	38	100
Pindara Renal Unit	23	0	0	0	0	0	0	0	0	23	100
Princess Alexandra Hospital	531	0	0	157	30	0	0	74	14	300	56
Queensland Kidney Transplant Service	795	795	100	0	0	0	0	0	0	0	0
Rockhampton Hospital	169	75	44	12	7	0	0	2	1	80	47
Royal Brisbane and Women's Hospital	589	227	39	74	13	0	0	37	6	251	43

continued on next page

continued from previous page

Centre	N KRT	N TX	% TX	N PD	% PD	N Hybrid	% Hybrid	N HHD*	% HHD*	N FacHD	% FacHD
St Andrew's Ipswich Private Hospital	43	4	9	0	0	0	0	0	0	39	91
St Andrew's Toowoomba B.Braun's Dialysis Clinic	21	0	0	0	0	0	0	0	0	21	100
Sunshine Coast University Hospital	412	239	58	12	3	1	0	13	3	147	36
Sunshine Coast University Private Hospital	30	0	0	0	0	0	0	0	0	30	100
The Wesley Hospital Brisbane	184	124	67	0	0	0	0	0	0	60	33
Toowoomba Hospital	268	117	44	39	15	0	0	19	7	93	35
Torres & Cape Kidney Health	61	18	30	0	0	0	0	0	0	43	70
Townsville University Hospital	361	113	31	43	12	0	0	12	3	193	53
New South Wales	8263	3684	45	977	12	3	0	422	5	3177	38
Bathurst Base Hospital	33	10	30	0	0	0	0	0	0	23	70
Coffs Harbour Hospital	137	65	47	4	3	0	0	3	2	65	47
Concord Repatriation General Hospital	281	112	40	32	11	0	0	16	6	121	43
Dubbo Base Hospital	134	58	43	9	7	0	0	4	3	63	47
Gosford Hospital	308	119	39	22	7	0	0	7	2	160	52
Gregory Hills B.Braun Renal Care Centre	39	0	0	0	0	0	0	0	0	39	100
John Hunter Hospital	635	359	57	55	9	0	0	31	5	190	30
Lismore Base Hospital	192	91	47	19	10	0	0	12	6	70	36
Liverpool Private Dialysis Centre	28	0	0	0	0	0	0	0	0	28	100
Manning Rural Hospital	74	15	20	11	15	1	1	2	3	45	61
Mater Hospital, North Sydney	75	34	45	0	0	0	0	0	0	41	55
Mayo Private Hospital	18	0	0	0	0	0	0	0	0	18	100
Newcastle Dialysis Centre	44	1	2	0	0	0	0	0	0	43	98
Orange Health Service	107	43	40	10	9	0	0	2	2	52	49
Port Macquarie Base Hospital	113	42	37	7	6	0	0	2	2	62	55
Port Macquarie Private Hospital	10	0	0	0	0	0	0	0	0	10	100
Royal North Shore Hospital	695	351	51	62	9	0	0	43	6	239	34
Royal Prince Alfred Hospital	652	421	65	37	6	0	0	49	8	145	22
South West Sydney Renal Service	1149	420	37	218	19	0	0	76	7	435	38
St George Hospital	490	252	51	33	7	0	0	23	5	182	37
St Vincent's Hospital Sydney	231	111	48	20	9	0	0	29	13	71	31
St Vincent's Lismore Private Dialysis Centre	19	0	0	0	0	0	0	0	0	19	100
Sydney Adventist Hospital	48	0	0	0	0	0	0	0	0	48	100
Tamworth Hospital	171	63	37	13	8	0	0	5	3	90	53

continued on next page

continued from previous page

Centre	N KRT	N TX	% TX	N PD	% PD	N Hybrid	% Hybrid	N HHD*	% HHD*	N FacHD	% FacHD
The Prince of Wales Hospital	280	167	60	26	9	0	0	6	2	81	29
Tweed Valley Hospital	85	14	16	11	13	0	0	0	0	60	71
Wagga Wagga Base Hospital	173	47	27	13	8	1	1	8	5	104	60
Western Sydney Renal Services	1637	711	43	325	20	1	0	90	5	510	31
<i>Nepean Hospital</i>	325	136	42	43	13	0	0	4	1	142	44
<i>Westmead Hospital</i>	1312	575	44	282	21	1	0	86	7	368	28
Wollongong Hospital	405	178	44	50	12	0	0	14	3	163	40
Australian Capital Territory	616	296	48	38	6	1	0	20	3	261	42
Access Nephrology	98	71	72	0	0	0	0	0	0	27	28
Canberra Hospital	518	225	43	38	7	1	0	20	4	234	45
Victoria	7540	3906	52	607	8	4	0	225	3	2798	37
Alfred Hospital	563	283	50	76	13	1	0	6	1	197	35
Austin Hospital	738	464	63	32	4	0	0	31	4	211	29
Bendigo Hospital	151	27	18	41	27	0	0	0	0	83	55
Diamond Valley B.Braun Renal Care Centre	38	0	0	0	0	0	0	0	0	38	100
Eastern Health Integrated Renal Services	452	205	45	33	7	0	0	11	2	203	45
Epworth Eastern Hospital	49	0	0	0	0	0	0	0	0	49	100
Epworth Geelong Hospital	22	0	0	0	0	0	0	0	0	22	100
Epworth Richmond Hospital	39	0	0	0	0	0	0	0	0	39	100
Forest Hill Dialysis Centre	44	0	0	0	0	0	0	0	0	44	100
Malvern Dialysis Centre	65	0	0	0	0	0	0	0	0	65	100
Monash Medical Centre	1790	1071	60	122	7	0	0	73	4	524	29
North Melbourne B.Braun Renal Care Centre	24	0	0	0	0	0	0	0	0	24	100
Northern Health Service Melbourne	272	59	22	35	13	0	0	9	3	169	62
South Eastern Private Hospital Dialysis Centre	25	0	0	0	0	0	0	0	0	25	100
St Vincent's Hospital Melbourne	591	280	47	68	12	0	0	9	2	234	40
Sunshine Private Dialysis Centre Fresenius	30	0	0	0	0	0	0	0	0	30	100
The Royal Melbourne Hospital	1778	1198	67	91	5	0	0	37	2	452	25
University Hospital Geelong Barwon Health	351	187	53	24	7	0	0	27	8	113	32
Western Health Service	518	132	25	85	16	3	1	22	4	276	53
Tasmania	563	328	58	47	8	0	0	6	1	182	32

continued on next page

continued from previous page

Centre	N KRT	N TX	% TX	N PD	% PD	N Hybrid	% Hybrid	N HHD*	% HHD*	N FacHD	% FacHD
Launceston General Hospital	305	160	52	33	11	0	0	6	2	106	35
Royal Hobart Hospital	258	168	65	14	5	0	0	0	0	76	29
South Australia	2214	1141	52	162	7	11	0	33	1	867	39
Central Northern Adelaide Renal Service	1726	890	52	129	7	10	1	32	2	665	39
Flinders Medical Centre	488	251	51	33	7	1	0	1	0	202	41
Northern Territory	958	158	16	40	4	0	0	37	4	723	75
Alice Springs Hospital	468	60	13	6	1	0	0	3	1	399	85
Royal Darwin Hospital	490	98	20	34	7	0	0	34	7	324	66
Western Australia	3047	1312	43	253	8	0	0	104	3	1378	45
Fiona Stanley Hospital	1167	540	46	84	7	0	0	40	3	503	43
Royal Perth Hospital	882	276	31	60	7	0	0	33	4	513	58
Sir Charles Gairdner Hospital	998	496	50	109	11	0	0	31	3	362	36
New Zealand	5514	2325	42	734	13	5	0	389	7	2061	37
Auckland City Hospital	647	258	40	33	5	0	0	57	9	299	46
Bay of Plenty Renal Unit	226	97	43	54	24	0	0	0	0	75	33
Christchurch Hospital	501	343	68	70	14	0	0	21	4	67	13
Dunedin Hospital	230	141	61	30	13	1	0	36	16	22	10
Hawkes Bay Hospital	185	89	48	18	10	0	0	9	5	69	37
Middlemore Hospital	1088	287	26	148	14	0	0	85	8	568	52
Palmerston North Hospital	296	106	36	32	11	4	1	26	9	128	43
Taranaki Hospital	112	59	53	15	13	0	0	5	4	33	29
Waikato Hospital	693	226	33	152	22	0	0	74	11	241	35
Waitemata Renal Service	608	273	45	45	7	0	0	36	6	254	42
Wellington Regional Hospital	656	330	50	110	17	0	0	25	4	191	29
Whangarei Hospital	272	116	43	27	10	0	0	15	6	114	42

5.2.2 Paediatric

This table presents the numbers (N) of prevalent kidney replacement therapy (KRT) patients at the end of the observation window by modality and centre. Modality is categorised as functioning kidney transplant (TX), peritoneal dialysis (PD), hybrid peritoneal dialysis and haemodialysis (Hybrid), home haemodialysis including community house haemodialysis (HHD*) and facility haemodialysis (FacHD). Also presented are the percentages (%) of each modality out of the total prevalent KRT cohort. Patients are included in this paediatric report if they were treated at a paediatric hospital. In rare cases when patients younger than 18 years are treated at an adult centre, they are included in the adult report. Any patients 18 years and older treated at a paediatric hospital are included in this report. Reporting of hybrid dialysis commenced in 2023, and there may be underreporting as this is a new treatment modality.

Centre	N KRT	N TX	% TX	N PD	% PD	N Hybrid	% Hybrid	N HHD*	% HHD*	N FacHD	% FacHD
Australia	324	274	85	41	13	1	0	0	0	8	2
Queensland	80	67	84	12	15	0	0	0	0	1	1
Child and Adolescent Renal Service	80	67	84	12	15	0	0	0	0	1	1
New South Wales	100	94	94	5	5	0	0	0	0	1	1
Sydney Children's Hospital	24	20	83	3	12	0	0	0	0	1	4
The Children's Hospital at Westmead	76	74	97	2	3	0	0	0	0	0	0
Victoria	97	76	78	16	16	1	1	0	0	4	4
Monash Children's Centre	26	18	69	4	15	1	4	0	0	3	12
Royal Children's Hospital	71	58	82	12	17	0	0	0	0	1	1
South Australia	18	15	83	3	17	0	0	0	0	0	0
Women's and Children's Hospital	18	15	83	3	17	0	0	0	0	0	0
Western Australia	29	22	76	5	17	0	0	0	0	2	7
Perth Children's Hospital	29	22	76	5	17	0	0	0	0	2	7
New Zealand	58	49	84	7	12	0	0	0	0	2	3
Starship Children's Hospital	58	49	84	7	12	0	0	0	0	2	3