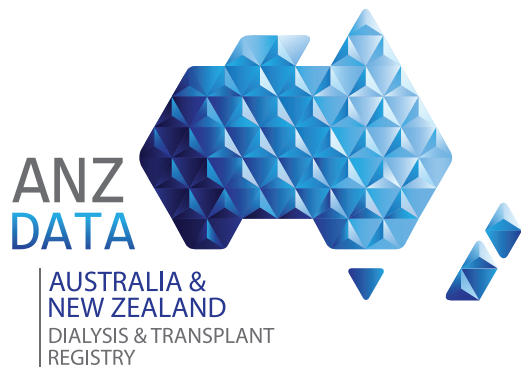


INTERIM



## Quality Indicators

**First Half of Year Report**

**01 January 2024 - 30 June 2024**

**Real-Time Database**

PUBLISHED 8 August 2024

The release of the Quality Indicator report is now an ANZDATA/ANZSN co-badged report. This information is provided as it is reported to ANZDATA. The reporting arrangements provide additional information to units on quality indicators. Units should use these data to monitor clinical practice and outcomes.

INTERIM

### **Note on Reports from the Real-Time Database**

This report has been generated from the “real-time” database, as contributed by units at the date of publication. Results are dependent on the timeliness and completeness of data submission by units. We try to provide indices to allow evaluation of the completeness both overall and for individual hospitals. However, results are preliminary and subject to change. The subsequent report from the Analysis database, following the end of year survey, will provide the final results for this observation period.

## Contents

<b>1</b>	<b>Incidence of Peritonitis in Patients Treated with Peritoneal Dialysis</b>	<b>3</b>
1.1	Adult . . . . .	3
1.2	Paediatric . . . . .	7
<b>2</b>	<b>Dialysis Access Planning at Commencement of Dialysis</b>	<b>8</b>
2.1	All Dialysis Access Planning . . . . .	8
2.1.1	Adult . . . . .	8
2.1.2	Paediatric . . . . .	13
2.2	Vascular Access at First Haemodialysis . . . . .	14
2.2.1	Adult . . . . .	14
2.2.2	Paediatric . . . . .	20
2.3	HD Vascular Access Planning . . . . .	21
2.3.1	Adult . . . . .	21
2.3.2	Paediatric . . . . .	26
2.4	PD Catheter Planning . . . . .	27
2.4.1	Adult . . . . .	27
2.4.2	Paediatric . . . . .	31
<b>3</b>	<b>Transplantation Wait Listing</b>	<b>32</b>
3.1	Adult . . . . .	32
3.2	Paediatric . . . . .	37
<b>4</b>	<b>ANZDATA annual data survey timeliness</b>	<b>38</b>
<b>5</b>	<b>Kidney Replacement Therapy (KRT) Modality</b>	<b>42</b>
5.1	Incident Modality . . . . .	42
5.1.1	Adult . . . . .	42
5.1.2	Paediatric . . . . .	46
5.2	Prevalent Modality . . . . .	47
5.2.1	Adult . . . . .	47
5.2.2	Paediatric . . . . .	51

# 1 Incidence of Peritonitis in Patients Treated with Peritoneal Dialysis

## 1.1 Adult

This table presents the total number of peritonitis episodes and patient exposure in years by Centre. Patient totals, exposure and peritonitis episodes were determined using the hospital at which the patient was receiving treatment at the time. So, if a patient transferred units during the observation period, the subsequent exposure and peritonitis episodes were allocated to the new unit. Months per episode (PM per Episode) is also reported. This should be interpreted as the average number of months between episodes of peritonitis; it can not be calculated if the peritonitis rate is zero. The half-yearly average number of 2023 episodes are based on the 2023 analysis database and are provided to allow assessment of possible under-reporting. This is a particular issue with peritonitis reporting. Patients are excluded from this adult report if they were treated at a paediatric hospital. In rare cases when patients younger than 18 years are treated at an adult centre, they are included in this adult report. Any patients 18 years and older treated at a paediatric hospital are excluded from this report. This quality indicator is presented for Australia only as New Zealand peritonitis episode data is reported through the New Zealand Peritoneal Dialysis Registry.

Centre	PD Patients	No of Episodes	Person Years	Rate (95% CI)	PM per Episode (95% CI)	Half-yearly Average of 2023 Episodes
<b>Australia</b>	<b>3186</b>	<b>214</b>	<b>1324.04</b>	<b>0.16 (0.14-0.18)</b>	<b>74.25 (64.94-85.29)</b>	<b>363.5</b>
<b>Queensland</b>	<b>596</b>	<b>56</b>	<b>238.26</b>	<b>0.24 (0.18-0.31)</b>	<b>51.06 (39.32-67.59)</b>	<b>74.5</b>
Bundaberg Hospital	16	2	6.19	0.32 (0.04-1.17)	37.13 (10.28-306.56)	3.5
Cairns Hospital	42	2	16.70	0.12 (0.01-0.43)	100.22 (27.74-827.56)	10
Gold Coast University Hospital	52	2	22.72	0.09 (0.01-0.32)	136.33 (37.74-1125.71)	3.5
Hervey Bay Hospital	20	5	8.65	0.58 (0.19-1.35)	20.77 (8.90-63.97)	3.5
Ipswich Hospital	26	1	10.50	0.10 (0.00-0.53)	126.00 (22.61-4976.57)	3
Mackay Base Hospital	18	0	7.30	0.00 (0.00-0.51)	. (23.74-.)	1
Metro South Kidney and Transplant Services	200	16	76.31	0.21 (0.12-0.34)	57.24 (35.25-100.14)	25
<i>Logan Hospital</i>	<i>90</i>	<i>14</i>	<i>35.41</i>	<i>0.40 (0.22-0.66)</i>	<i>30.35 (18.09-55.52)</i>	<i>0</i>
<i>Princess Alexandra Hospital</i>	<i>110</i>	<i>2</i>	<i>40.90</i>	<i>0.05 (0.01-0.18)</i>	<i>245.42 (67.94-2026.52)</i>	<i>25</i>
Rockhampton Hospital	13	1	5.92	0.17 (0.00-0.94)	71.00 (12.74-2804.27)	.5
Royal Brisbane and Women's Hospital	95	10	38.14	0.26 (0.13-0.48)	45.76 (24.88-95.43)	6.5
Sunshine Coast University Hospital	16	0	5.78	0.00 (0.00-0.64)	. (18.81-.)	1.5
Toowoomba Hospital	43	3	19.01	0.16 (0.03-0.46)	76.02 (26.01-368.65)	7.5
Townsville University Hospital	55	14	21.04	0.67 (0.36-1.12)	18.03 (10.75-32.98)	9
<b>New South Wales</b>	<b>1128</b>	<b>40</b>	<b>491.77</b>	<b>0.08 (0.06-0.11)</b>	<b>147.53 (108.34-206.51)</b>	<b>142</b>
Coffs Harbour Hospital	4	0	1.99	0.00 (0.00-1.85)	. (6.48-.)	0
Concord Repatriation General Hospital	39	1	16.98	0.06 (0.00-0.33)	203.73 (36.57-8046.86)	6
Dubbo Base Hospital	11	0	4.27	0.00 (0.00-0.86)	. (13.90-.)	1

continued on next page

continued from previous page

Centre	PD Patients	No of Episodes	Person Years	Rate (95% CI)	PM per Episode (95% CI)	Half-yearly Average of 2023 Episodes
Gosford Hospital	24	2	10.80	0.19 (0.02-0.67)	64.79 (17.94-534.98)	1
Gregory Hills B.Braun Renal Care Centre	1	0	0.00	0.00 (0.00-1347.36)	. (0.01-.)	0
John Hunter Hospital	74	7	28.61	0.24 (0.10-0.50)	49.04 (23.80-121.98)	13
Lismore Base Hospital	21	3	8.98	0.33 (0.07-0.98)	35.92 (12.29-174.18)	5.5
Manning Rural Hospital	16	1	7.29	0.14 (0.00-0.76)	87.52 (15.71-3457.00)	.5
Nepean Hospital	47	0	21.78	0.00 (0.00-0.17)	. (70.84-.)	11
Orange Health Service	10	3	4.94	0.61 (0.13-1.77)	19.77 (6.76-95.85)	0
Port Macquarie Base Hospital	7	0	3.22	0.00 (0.00-1.15)	. (10.47-.)	3.5
Royal North Shore Hospital	77	3	32.38	0.09 (0.02-0.27)	129.50 (44.31-627.96)	4
Royal Prince Alfred Hospital	43	4	17.47	0.23 (0.06-0.59)	52.41 (20.47-192.36)	5.5
South West Sydney Renal Service	229	3	104.99	0.03 (0.01-0.08)	419.95 (143.70-2036.39)	36.5
St George Hospital	46	2	17.68	0.11 (0.01-0.41)	106.09 (29.37-875.99)	3.5
St Vincent's Hospital Sydney	22	3	9.38	0.32 (0.07-0.93)	37.53 (12.84-181.99)	1.5
Sydney Adventist Hospital	1	0	0.19	0.00 (0.00-19.81)	. (0.61-.)	0
Tamworth Hospital	17	1	7.09	0.14 (0.00-0.79)	85.09 (15.27-3360.97)	2.5
The Prince of Wales Hospital	30	2	13.05	0.15 (0.02-0.55)	78.28 (21.67-646.34)	2.5
Tweed Valley Hospital	12	0	4.83	0.00 (0.00-0.76)	. (15.70-.)	1.5
Wagga Wagga Base Hospital	15	0	7.02	0.00 (0.00-0.53)	. (22.83-.)	3
Westmead Hospital	322	0	142.04	0.00 (0.00-0.03)	. (462.05-.)	37
Wollongong Hospital	60	5	26.80	0.19 (0.06-0.44)	64.33 (27.57-198.12)	3
<b>Australian Capital Territory</b>	<b>49</b>	<b>4</b>	<b>21.51</b>	<b>0.19 (0.05-0.48)</b>	<b>64.52 (25.20-236.79)</b>	<b>5.5</b>
Canberra Hospital	49	4	21.51	0.19 (0.05-0.48)	64.52 (25.20-236.79)	5.5
<b>Victoria</b>	<b>770</b>	<b>42</b>	<b>310.08</b>	<b>0.14 (0.10-0.18)</b>	<b>88.60 (65.54-122.93)</b>	<b>55</b>
Alfred Hospital	96	7	36.75	0.19 (0.08-0.39)	63.00 (30.58-156.71)	9
Austin Hospital	36	0	14.66	0.00 (0.00-0.25)	. (47.68-.)	2
Bendigo Hospital	52	3	21.13	0.14 (0.03-0.42)	84.50 (28.91-409.75)	5.5
Eastern Health Integrated Renal Services	35	1	16.38	0.06 (0.00-0.34)	196.53 (35.27-7762.67)	3
Monash Medical Centre	162	15	65.83	0.23 (0.13-0.38)	52.67 (31.93-94.10)	8.5
Northern Health Service Melbourne	42	0	16.93	0.00 (0.00-0.22)	. (55.06-.)	2.5
St Vincent's Hospital Melbourne	90	11	37.21	0.30 (0.15-0.53)	40.59 (22.69-81.31)	9
The Royal Melbourne Hospital	120	5	46.40	0.11 (0.03-0.25)	111.36 (47.72-342.97)	9
University Hospital Geelong Barwon Health	34	0	12.21	0.00 (0.00-0.30)	. (39.73-.)	2

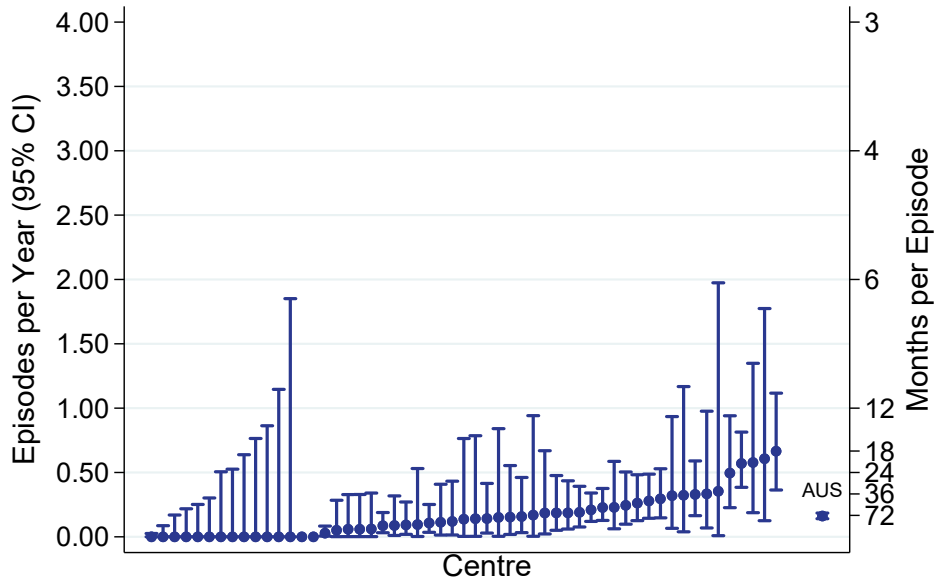
continued on next page

continued from previous page

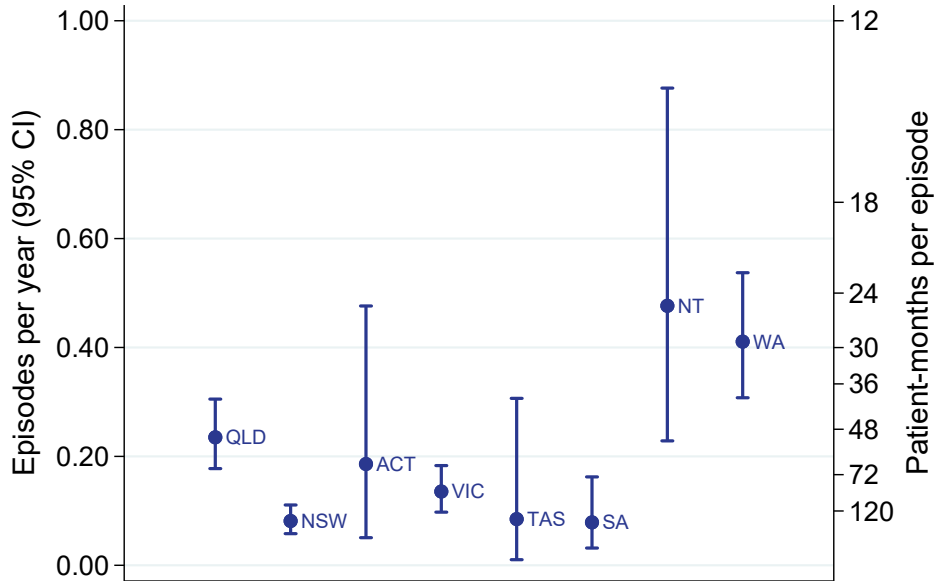
Centre	PD Patients	No of Episodes	Person Years	Rate (95% CI)	PM per Episode (95% CI)	Half-yearly Average of 2023 Episodes
Western Health Service	103	0	42.59	0.00 (0.00-0.09)	. (138.55-.)	4.5
<b>Tasmania</b>	<b>54</b>	<b>2</b>	<b>23.57</b>	<b>0.08 (0.01-0.31)</b>	<b>141.42 (39.15-1167.76)</b>	<b>7</b>
Launceston General Hospital	37	1	16.94	0.06 (0.00-0.33)	203.30 (36.49-8029.99)	5
Royal Hobart Hospital	17	1	6.63	0.15 (0.00-0.84)	79.54 (14.28-3141.66)	2
<b>South Australia</b>	<b>207</b>	<b>7</b>	<b>88.84</b>	<b>0.08 (0.03-0.16)</b>	<b>152.29 (73.91-378.78)</b>	<b>14</b>
Central Northern Adelaide Renal Service	162	6	69.22	0.09 (0.03-0.19)	138.44 (63.60-377.23)	11.5
Flinders Medical Centre	45	1	19.62	0.05 (0.00-0.28)	235.40 (42.25-9297.82)	2.5
<b>Northern Territory</b>	<b>52</b>	<b>10</b>	<b>20.99</b>	<b>0.48 (0.23-0.88)</b>	<b>25.18 (13.69-52.51)</b>	<b>15</b>
Alice Springs Hospital	6	1	2.82	0.35 (0.01-1.97)	33.87 (6.08-1337.90)	.5
Royal Darwin Hospital	46	9	18.16	0.50 (0.23-0.94)	24.22 (12.76-52.96)	14.5
<b>Western Australia</b>	<b>330</b>	<b>53</b>	<b>129.03</b>	<b>0.41 (0.31-0.54)</b>	<b>29.21 (22.34-39.00)</b>	<b>50.5</b>
Fiona Stanley Hospital	108	12	43.03	0.28 (0.14-0.49)	43.03 (24.63-83.28)	10.5
Royal Perth Hospital	87	11	33.37	0.33 (0.16-0.59)	36.41 (20.35-72.93)	14
Sir Charles Gairdner Hospital	135	30	52.63	0.57 (0.38-0.81)	21.05 (14.75-31.20)	26

INTERIM

PD Peritonitis Rate, Adults  
01 January 2024 - 30 June 2024



PD Peritonitis Rate, Adults  
By Jurisdiction, 01 January 2024 - 30 June 2024



## 1.2 Paediatric

This table presents the total number of peritonitis episodes and patient exposure in years by Centre. Patient totals, exposure and peritonitis episodes were determined using the hospital at which the patient was receiving treatment at the time. So, if a patient transferred units during the observation period, the subsequent exposure and peritonitis episodes were allocated to the new unit. Months per episode (PM per Episode) is also reported. This should be interpreted as the average number of months between episodes of peritonitis; it can not be calculated if the peritonitis rate is zero. The half-yearly average number of 2023 episodes are based on the 2023 analysis database and are provided to allow assessment of possible under-reporting. This is a particular issue with peritonitis reporting. Patients are included in this paediatric report if they were treated at a paediatric hospital. In rare cases when patients younger than 18 years are treated at an adult centre, they are included in the adult report. Any patients 18 years and older treated at a paediatric hospital are included in this report.

Centre	PD Patients	No of Episodes	Person Years	Rate (95% CI)	PM per Episode (95% CI)	Half-yearly Average of 2023 Episodes
<b>Australia</b>	<b>52</b>	<b>5</b>	<b>21.19</b>	<b>0.24 (0.08-0.55)</b>	<b>50.86 (21.80-156.65)</b>	<b>12.5</b>
<b>Queensland</b>	<b>18</b>	<b>4</b>	<b>7.45</b>	<b>0.54 (0.15-1.37)</b>	<b>22.36 (8.73-82.06)</b>	<b>5.5</b>
Child and Adolescent Renal Service	18	4	7.45	0.54 (0.15-1.37)	22.36 (8.73-82.06)	5.5
<b>New South Wales</b>	<b>6</b>	<b>0</b>	<b>2.11</b>	<b>0.00 (0.00-1.75)</b>	<b>. (6.85-.)</b>	<b>1</b>
Sydney Children's Hospital	4	0	1.11	0.00 (0.00-3.33)	.(3.61-.)	1
The Children's Hospital at Westmead	2	0	1.00	0.00 (0.00-3.70)	.(3.24-.)	0
<b>Victoria</b>	<b>18</b>	<b>1</b>	<b>7.33</b>	<b>0.14 (0.00-0.76)</b>	<b>87.95 (15.79-3473.87)</b>	<b>5</b>
Monash Children's Centre	5	1	2.42	0.41 (0.01-2.30)	29.04 (5.21-1147.14)	1.5
Royal Children's Hospital	13	0	4.91	0.00 (0.00-0.75)	.(15.97-.)	3.5
<b>South Australia</b>	<b>5</b>	<b>0</b>	<b>1.90</b>	<b>0.00 (0.00-1.94)</b>	<b>. (6.19-.)</b>	<b>0</b>
Women's and Children's Hospital	5	0	1.90	0.00 (0.00-1.94)	.(6.19-.)	0
<b>Western Australia</b>	<b>5</b>	<b>0</b>	<b>2.40</b>	<b>0.00 (0.00-1.53)</b>	<b>. (7.82-.)</b>	<b>1</b>
Perth Children's Hospital	5	0	2.40	0.00 (0.00-1.53)	.(7.82-.)	1
<b>New Zealand</b>	<b>9</b>	<b>0</b>	<b>3.33</b>	<b>0.00 (0.00-1.11)</b>	<b>. (10.83-.)</b>	<b>2.5</b>
Starship Children's Hospital	9	0	3.33	0.00 (0.00-1.11)	.(10.83-.)	2.5



## 2 Dialysis Access Planning at Commencement of Dialysis

### 2.1 All Dialysis Access Planning

#### 2.1.1 Adult

This table presents the numbers of patients beginning haemodialysis or peritoneal dialysis and the percentage starting with a permanent access (an AVF or AVG for haemodialysis and all peritoneal dialysis patients) during the observation window by Centre, where dialysis was the first kidney replacement therapy. Patients are excluded from this adult report if they were treated at a paediatric hospital. In rare cases when patients younger than 18 years are treated at an adult centre, they are included in this adult report. Any patients 18 years and older treated at a paediatric hospital are excluded from this report. Some Centres did not report type of first access for all new HD patients. The percent beginning with a permanent access is based on the number of patients with data available for first access. The half-yearly average number of new dialysis patients for 2023 from the analysis database is also provided to allow assessment of possible under-reporting. Finally, the total of Early Referrals (patients seen more than 3 months before first treatment) and the percentage of Early Referrals with a permanent access are also presented.

Centre	Dialysis Patients	AVF or AVG or PD	Vascular Catheter	Missing Access Data	Half-yearly Average of 2023 Dialysis Patients	% of AVF or AVG or PD (95 % CI)	Early Referral	% of Early Referrals with AVF or AVG or PD
<b>Australia</b>	<b>1398</b>	<b>800</b>	<b>589</b>	<b>9</b>	<b>1650.5</b>	<b>58 (55-60)</b>	<b>1102</b>	<b>65 (62-68)</b>
<b>Queensland</b>	<b>296</b>	<b>157</b>	<b>137</b>	<b>2</b>	<b>353</b>	<b>53 (48-59)</b>	<b>244</b>	<b>61 (54-67)</b>
Bundaberg Hospital	11	4	7	0	7	36 (11-69)	9	44 (14-79)
Cairns Hospital	24	14	10	0	31.5	58 (37-78)	20	70 (46-88)
Cairns Private Hospital	2	1	1	0	1	50 (1-99)	2	50 (1-99)
Chermside Dialysis Centre	3	2	1	0	7	67 (9-99)	3	67 (9-99)
Gold Coast University Hospital	25	9	15	1	24.5	38 (19-59)	15	60 (32-84)
Henry Dalziel Dialysis Clinic - Greenslopes	15	8	7	0	19	53 (27-79)	15	53 (27-79)
Hervey Bay Hospital	7	3	4	0	9	43 (10-82)	6	50 (12-88)
Ipswich Hospital	15	5	10	0	21	33 (12-62)	14	36 (13-65)
John Flynn Private Hospital	2	0	2	0	5	0 (0-84)	2	0 (0-84)
Mackay Base Hospital	8	7	1	0	13	88 (47-100)	8	88 (47-100)
Mater Hospital, Townsville	1	1	0	0	6.5	100 (2-100)	1	100 (2-100)
Metro South Kidney and Transplant Services	67	44	23	0	57.5	66 (53-77)	61	70 (57-81)
<i>Logan Hospital</i>	22	15	7	0	0	68 (45-86)	19	79 (54-94)
<i>Princess Alexandra Hospital</i>	43	28	15	0	57.5	65 (49-79)	41	68 (52-82)
<i>Redlands Hospital</i>	2	1	1	0	0	50 (1-99)	1	0 (0-98)

continued on next page

continued from previous page

Centre	Dialysis Patients	AVF or AVG or PD	Vascular Catheter	Missing Access Data	Half-yearly Average of 2023 Dialysis Patients	% of AVF or AVG or PD (95 % CI)	Early Referral	% of Early Referrals with AVF or AVG or PD
Nambour Selangor Private Hospital	1	1	0	0	0	100 (2-100)	0	-
North Lakes Dialysis Centre	1	0	1	0	3.5	0 (0-98)	1	0 (0-98)
Royal Brisbane and Women's Hospital	30	23	7	0	28	77 (58-90)	24	83 (63-95)
St Andrew's Ipswich Private Hospital	3	3	0	0	6.5	100 (29-100)	3	100 (29-100)
St Andrew's Toowoomba B.Braun'S Dialysis Clinic	5	2	3	0	1.5	40 (5-85)	3	67 (9-99)
Sunshine Coast University Hospital	11	7	4	0	23	64 (31-89)	9	67 (30-93)
Sunshine Coast University Private Hospital	2	1	1	0	2	50 (1-99)	2	50 (1-99)
The Wesley Hospital Brisbane	21	2	19	0	22.5	10 (1-30)	12	17 (2-48)
Toowoomba Hospital	14	7	6	1	19	54 (25-81)	9	67 (30-93)
Torres & Cape Kidney Health	1	1	0	0	1	100 (2-100)	1	100 (2-100)
Townsville University Hospital	27	12	15	0	21.5	44 (25-65)	24	42 (22-63)
<b>New South Wales</b>	<b>322</b>	<b>190</b>	<b>130</b>	<b>2</b>	<b>456</b>	<b>59 (54-65)</b>	<b>245</b>	<b>67 (61-73)</b>
Bathurst Base Hospital	1	0	1	0	1.5	0 (0-98)	1	0 (0-98)
Coffs Harbour Hospital	5	3	2	0	8.5	60 (15-95)	3	67 (9-99)
Concord Repatriation General Hospital	17	12	5	0	10.5	71 (44-90)	11	91 (59-100)
Dubbo Base Hospital	11	9	2	0	7.5	82 (48-98)	10	80 (44-97)
Gosford Hospital	14	4	10	0	21.5	29 (8-58)	8	50 (16-84)
John Hunter Hospital	20	16	4	0	29.5	80 (56-94)	18	83 (59-96)
Lismore Base Hospital	4	3	1	0	13.5	75 (19-99)	4	75 (19-99)
Manning Rural Hospital	4	1	2	1	4.5	33 (1-91)	2	0 (0-84)
Mater Hospital, North Sydney	1	1	0	0	5.5	100 (2-100)	1	100 (2-100)
Mayo Private Hospital	1	0	1	0	.5	0 (0-98)	1	0 (0-98)
Nepean Hospital	19	5	14	0	17	26 (9-51)	11	36 (11-69)
Newcastle Dialysis Centre	2	2	0	0	2.5	100 (16-100)	2	100 (16-100)
Orange Health Service	10	3	7	0	8	30 (7-65)	7	43 (10-82)
Port Macquarie Base Hospital	8	4	4	0	8	50 (16-84)	6	67 (22-96)
Royal North Shore Hospital	26	19	7	0	42.5	73 (52-88)	17	82 (57-96)
Royal Prince Alfred Hospital	23	11	12	0	23.5	48 (27-69)	20	45 (23-68)
South West Sydney Renal Service	16	14	2	0	58.5	88 (62-98)	16	88 (62-98)
St George Hospital	21	15	6	0	20.5	71 (48-89)	18	78 (52-94)

continued on next page

continued from previous page

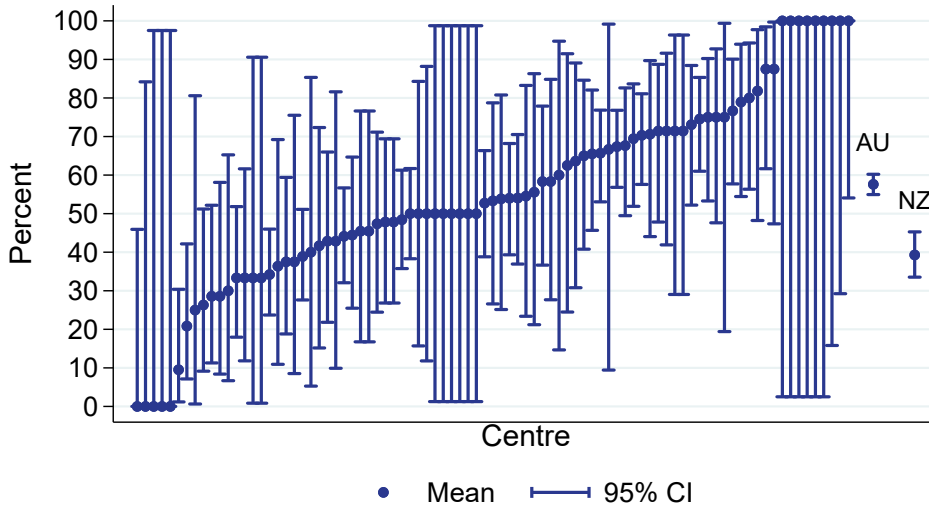
Centre	Dialysis Patients	AVF or AVG or PD	Vascular Catheter	Missing Access Data	Half-yearly Average of 2023 Dialysis Patients	% of AVF or AVG or PD (95 % CI)	Early Referral	% of Early Referrals with AVF or AVG or PD
St Vincent's Hospital Sydney	12	5	7	0	15	42 (15-72)	8	62 (24-91)
St Vincent's Lismore Private Dialysis Centre	2	1	1	0	3.5	50 (1-99)	2	50 (1-99)
Sydney Adventist Hospital	3	1	2	0	4.5	33 (1-91)	3	33 (1-91)
Tamworth Hospital	10	5	4	1	14.5	56 (21-86)	5	100 (48-100)
Tweed Valley Hospital	6	0	6	0	7.5	0 (0-46)	5	0 (0-52)
Wagga Wagga Base Hospital	11	5	6	0	15.5	45 (17-77)	6	50 (12-88)
Westmead Hospital	64	45	19	0	75.5	70 (58-81)	51	75 (60-86)
Wollongong Hospital	11	6	5	0	21	55 (23-83)	9	44 (14-79)
<b>Australian Capital Territory</b>	<b>36</b>	<b>24</b>	<b>12</b>	<b>0</b>	<b>29.5</b>	<b>67 (49-81)</b>	<b>30</b>	<b>80 (61-92)</b>
Access Nephrology	2	1	1	0	4.5	50 (1-99)	2	50 (1-99)
Canberra Hospital	34	23	11	0	25	68 (49-83)	28	82 (63-94)
<b>Victoria</b>	<b>375</b>	<b>240</b>	<b>132</b>	<b>3</b>	<b>416</b>	<b>65 (59-69)</b>	<b>312</b>	<b>69 (64-74)</b>
Alfred Hospital	36	25	11	0	32.5	69 (52-84)	35	71 (54-85)
Austin Hospital	21	6	15	0	36.5	29 (11-52)	19	32 (13-57)
Bendigo Hospital	12	7	5	0	14.5	58 (28-85)	8	75 (35-97)
Eastern Health Integrated Renal Services	8	5	3	0	27	62 (24-91)	8	62 (24-91)
Epworth Eastern Hospital	6	6	0	0	5.5	100 (54-100)	6	100 (54-100)
Epworth Richmond Hospital	8	3	5	0	5	38 (9-76)	8	38 (9-76)
Forest Hill Dialysis Centre	1	1	0	0	2.5	100 (2-100)	1	100 (2-100)
Malvern Dialysis Centre	8	5	2	1	5.5	71 (29-96)	4	100 (40-100)
Monash Medical Centre	92	62	30	0	83.5	67 (57-77)	75	69 (58-79)
Northern Health Service Melbourne	29	19	10	0	26.5	66 (46-82)	25	72 (51-88)
South Eastern Private Hospital Dialysis Centre	2	1	1	0	1.5	50 (1-99)	0	-
St Vincent's Hospital Melbourne	24	18	6	0	34.5	75 (53-90)	17	94 (71-100)
Sunshine Private Dialysis Centre Fresenius	1	1	0	0	0	100 (2-100)	0	-
The Royal Melbourne Hospital	57	41	14	2	60.5	75 (61-85)	46	80 (66-91)
University Hospital Geelong Barwon Health	20	13	7	0	29.5	65 (41-85)	19	68 (43-87)
Western Health Service	50	27	23	0	47.5	54 (39-68)	41	59 (42-74)

continued on next page

continued from previous page

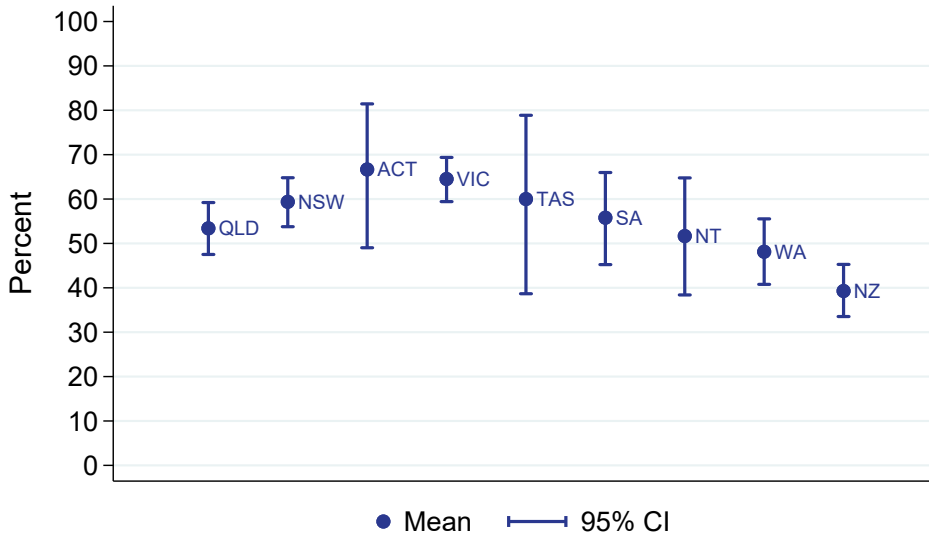
Centre	Dialysis Patients	AVF or AVG or PD	Vascular Catheter	Missing Access Data	Half-yearly Average of 2023 Dialysis Patients	% of AVF or AVG or PD (95 % CI)	Early Referral	% of Early Referrals with AVF or AVG or PD
<b>Tasmania</b>	<b>25</b>	<b>15</b>	<b>10</b>	<b>0</b>	<b>23.5</b>	<b>60 (39-79)</b>	<b>22</b>	<b>64 (41-83)</b>
Launceston General Hospital	11	5	6	0	14	45 (17-77)	10	50 (19-81)
Royal Hobart Hospital	14	10	4	0	9.5	71 (42-92)	12	75 (43-95)
<b>South Australia</b>	<b>96</b>	<b>53</b>	<b>42</b>	<b>1</b>	<b>117</b>	<b>56 (45-66)</b>	<b>86</b>	<b>62 (51-72)</b>
Central Northern Adelaide Renal Service	77	38	38	1	89.5	50 (38-62)	71	54 (41-65)
Flinders Medical Centre	19	15	4	0	27.5	79 (54-94)	15	100 (78-100)
<b>Northern Territory</b>	<b>61</b>	<b>31</b>	<b>29</b>	<b>1</b>	<b>67.5</b>	<b>52 (38-65)</b>	<b>56</b>	<b>55 (41-69)</b>
Alice Springs Hospital	24	11	12	1	28	48 (27-69)	22	50 (28-72)
Royal Darwin Hospital	37	20	17	0	39.5	54 (37-71)	34	59 (41-75)
<b>Western Australia</b>	<b>187</b>	<b>90</b>	<b>97</b>	<b>0</b>	<b>188</b>	<b>48 (41-56)</b>	<b>107</b>	<b>64 (55-73)</b>
Fiona Stanley Hospital	68	30	38	0	71.5	44 (32-57)	20	95 (75-100)
Royal Perth Hospital	64	31	33	0	62.5	48 (36-61)	50	50 (36-64)
Sir Charles Gairdner Hospital	55	29	26	0	54	53 (39-66)	37	68 (50-82)
<b>New Zealand</b>	<b>280</b>	<b>110</b>	<b>170</b>	<b>0</b>	<b>347.5</b>	<b>39 (34-45)</b>	<b>199</b>	<b>49 (42-56)</b>
Auckland City Hospital	33	11	22	0	35	33 (18-52)	28	39 (22-59)
Christchurch Hospital	16	12	4	0	25.5	75 (48-93)	14	79 (49-95)
Dunedin Hospital	7	5	2	0	8.5	71 (29-96)	4	75 (19-99)
Hawkes Bay Hospital	6	3	3	0	13.5	50 (12-88)	6	50 (12-88)
Middlemore Hospital	76	26	50	0	89	34 (24-46)	38	63 (46-78)
Palmerston North Hospital	4	1	3	0	17.5	25 (1-81)	4	25 (1-81)
Taranaki Hospital	2	1	1	0	7.5	50 (1-99)	2	50 (1-99)
Waikato Hospital	72	28	44	0	74	39 (28-51)	56	43 (30-57)
Waitemata Renal Service	24	5	19	0	27	21 (7-42)	19	26 (9-51)
Wellington Regional Hospital	21	9	12	0	33.5	43 (22-66)	17	47 (23-72)
Whangarei Hospital	19	9	10	0	13	47 (24-71)	11	55 (23-83)

All dialysis access planning (AVF/AVG or PD)  
 % of all dialysis starts, Adults  
 01 January 2024 - 30 June 2024



All adult dialysis starts including late referred patients

All dialysis access planning (AVF/AVG or PD)  
 % of all dialysis starts, Adults  
 By Jurisdiction, 01 January 2024 - 30 June 2024



**2.1.2 Paediatric**

This table presents the numbers of patients beginning haemodialysis or peritoneal dialysis and the percentage starting with a permanent access (an AVF or AVG for haemodialysis and all peritoneal dialysis patients) during the observation window by Centre, where dialysis was the first kidney replacement therapy. Patients are included in this paediatric report if they were treated at a paediatric hospital. In rare cases when patients younger than 18 years are treated at an adult centre, they are included in the adult report. Any patients 18 years and older treated at a paediatric hospital are included in this report. The half-yearly average number of new dialysis patients for 2023 from the analysis database is also provided to allow assessment of possible under-reporting. Finally, the total of Early Referrals (patients seen more than 3 months before first treatment) and the percentage of Early Referrals with a permanent access are also presented.

Centre	Dialysis Patients	AVF or AVG or PD	Vascular Catheter	Missing Access Data	Half-yearly Average of 2023 Dialysis Patients	% of AVF or AVG or PD (95 % CI)	Early Referral	% of Early Referrals with AVF or AVG or PD
<b>Australia</b>	<b>9</b>	<b>7</b>	<b>2</b>	<b>0</b>	<b>12.5</b>	<b>78 (40-97)</b>	<b>8</b>	<b>75 (35-97)</b>
<b>Queensland</b> Child and Adolescent Renal Service	<b>6</b> 6	<b>5</b> 5	<b>1</b> 1	<b>0</b> 0	<b>3</b> 3	<b>83 (36-100)</b> 83 (36-100)	<b>5</b> 5	<b>80 (28-99)</b> 80 (28-99)
<b>New South Wales</b> Sydney Children's Hospital	<b>1</b> 1	<b>1</b> 1	<b>0</b> 0	<b>0</b> 0	<b>2</b> 1	<b>100 (2-100)</b> 100 (2-100)	<b>1</b> 1	<b>100 (2-100)</b> 100 (2-100)
<b>Victoria</b> Royal Children's Hospital	<b>1</b> 1	<b>0</b> 0	<b>1</b> 1	<b>0</b> 0	<b>4.5</b> 3.5	<b>0 (0-98)</b> 0 (0-98)	<b>1</b> 1	<b>0 (0-98)</b> 0 (0-98)
<b>South Australia</b> Women's and Children's Hospital	<b>1</b> 1	<b>1</b> 1	<b>0</b> 0	<b>0</b> 0	<b>1</b> 1	<b>100 (2-100)</b> 100 (2-100)	<b>1</b> 1	<b>100 (2-100)</b> 100 (2-100)
<b>New Zealand</b> Starship Children's Hospital	<b>2</b> 2	<b>2</b> 2	<b>0</b> 0	<b>0</b> 0	<b>2.5</b> 2.5	<b>100 (16-100)</b> 100 (16-100)	<b>2</b> 2	<b>100 (16-100)</b> 100 (16-100)

## 2.2 Vascular Access at First Haemodialysis

### 2.2.1 Adult

This table presents the numbers of patients beginning haemodialysis and the percentage starting with an AVF or AVG during the observation window by Centre, where HD was the first kidney replacement therapy. Patients are excluded from this adult report if they were treated at a paediatric hospital. In rare cases when patients younger than 18 years are treated at an adult centre, they are included in this adult report. Any patients 18 years and older treated at a paediatric hospital are excluded from this report. Some Centres did not report type of first access for all new HD patients. The percent beginning with AVF or AVG is based on the number of patients with data available for first access. The half-yearly average number of new HD patients for 2023 from the analysis database is also provided to allow assessment of possible under-reporting. Finally, the total of Early Referrals (patients seen more than 3 months before first treatment) and the percentage of Early Referrals with AVF or AVG are also presented.

Centre	HD Patients	AVF or AVG	Vascular Catheter	Missing Access Data	Half-yearly Average of 2023 HD Patients	% of AVF or AVG (95 % CI)	Early Referral	% of Early Referrals with AVF or AVG
<b>Australia</b>	<b>1006</b>	<b>408</b>	<b>589</b>	<b>9</b>	<b>1222</b>	<b>41 (38-44)</b>	<b>757</b>	<b>49 (46-53)</b>
<b>Queensland</b>	<b>222</b>	<b>83</b>	<b>137</b>	<b>2</b>	<b>276.5</b>	<b>38 (31-44)</b>	<b>174</b>	<b>45 (37-53)</b>
Bundaberg Hospital	9	2	7	0	5	22 (3-60)	7	29 (4-71)
Cairns Hospital	23	13	10	0	28	57 (34-77)	19	68 (43-87)
Cairns Private Hospital	2	1	1	0	1	50 (1-99)	2	50 (1-99)
Chermside Dialysis Centre	3	2	1	0	7	67 (9-99)	3	67 (9-99)
Gold Coast University Hospital	21	5	15	1	17.5	25 (9-49)	11	45 (17-77)
Henry Dalziel Dialysis Clinic - Greenslopes	15	8	7	0	19	53 (27-79)	15	53 (27-79)
Hervey Bay Hospital	6	2	4	0	6	33 (4-78)	5	40 (5-85)
Ipswich Hospital	10	0	10	0	16	0 (0-31)	9	0 (0-34)
John Flynn Private Hospital	2	0	2	0	5	0 (0-84)	2	0 (0-84)
Mackay Base Hospital	7	6	1	0	9	86 (42-100)	7	86 (42-100)
Mater Hospital, Townsville	1	1	0	0	6.5	100 (2-100)	1	100 (2-100)
Metro South Kidney and Transplant Services	34	11	23	0	32	32 (17-51)	28	36 (19-56)
<i>Logan Hospital</i>	8	1	7	0	0	12 (0-53)	5	20 (1-72)
<i>Princess Alexandra Hospital</i>	24	9	15	0	32	38 (19-59)	22	41 (21-64)
<i>Redlands Hospital</i>	2	1	1	0	0	50 (1-99)	1	0 (0-98)
Nambour Selangor Private Hospital	1	1	0	0	0	100 (2-100)	0	-
North Lakes Dialysis Centre	1	0	1	0	3.5	0 (0-98)	1	0 (0-98)
Royal Brisbane and Women's Hospital	13	6	7	0	20	46 (19-75)	9	56 (21-86)
St Andrew's Ipswich Private Hospital	3	3	0	0	6.5	100 (29-100)	3	100 (29-100)

continued on next page

continued from previous page

Centre	HD Patients	AVF or AVG	Vascular Catheter	Missing Access Data	Half-yearly Average of 2023 HD Patients	% of AVF or AVG (95 % CI)	Early Referral	% of Early Referrals with AVF or AVG
St Andrew's Toowoomba B.Braun'S Dialysis Clinic	5	2	3	0	1.5	40 (5-85)	3	67 (9-99)
Sunshine Coast University Hospital	9	5	4	0	20.5	56 (21-86)	7	57 (18-90)
Sunshine Coast University Private Hospital	2	1	1	0	2	50 (1-99)	2	50 (1-99)
The Wesley Hospital Brisbane	21	2	19	0	22.5	10 (1-30)	12	17 (2-48)
Toowoomba Hospital	11	4	6	1	9	40 (12-74)	7	57 (18-90)
Torres & Cape Kidney Health	1	1	0	0	1	100 (2-100)	1	100 (2-100)
Townsville University Hospital	22	7	15	0	16	32 (14-55)	20	30 (12-54)
<b>New South Wales</b>	<b>222</b>	<b>90</b>	<b>130</b>	<b>2</b>	<b>314</b>	<b>41 (34-48)</b>	<b>159</b>	<b>49 (41-57)</b>
Bathurst Base Hospital	1	0	1	0	1.5	0 (0-98)	1	0 (0-98)
Coffs Harbour Hospital	5	3	2	0	8	60 (15-95)	3	67 (9-99)
Concord Repatriation General Hospital	11	6	5	0	6	55 (23-83)	7	86 (42-100)
Dubbo Base Hospital	10	8	2	0	6	80 (44-97)	10	80 (44-97)
Gosford Hospital	13	3	10	0	20	23 (5-54)	7	43 (10-82)
John Hunter Hospital	8	4	4	0	17.5	50 (16-84)	6	50 (12-88)
Lismore Base Hospital	4	3	1	0	9.5	75 (19-99)	4	75 (19-99)
Manning Rural Hospital	3	0	2	1	3.5	0 (0-84)	2	0 (0-84)
Mater Hospital, North Sydney	1	1	0	0	5.5	100 (2-100)	1	100 (2-100)
Mayo Private Hospital	1	0	1	0	.5	0 (0-98)	1	0 (0-98)
Nepean Hospital	17	3	14	0	12.5	18 (4-43)	9	22 (3-60)
Newcastle Dialysis Centre	2	2	0	0	2.5	100 (16-100)	2	100 (16-100)
Orange Health Service	10	3	7	0	5.5	30 (7-65)	7	43 (10-82)
Port Macquarie Base Hospital	8	4	4	0	7.5	50 (16-84)	6	67 (22-96)
Royal North Shore Hospital	12	5	7	0	29.5	42 (15-72)	8	62 (24-91)
Royal Prince Alfred Hospital	20	8	12	0	17.5	40 (19-64)	18	39 (17-64)
South West Sydney Renal Service	6	4	2	0	30.5	67 (22-96)	6	67 (22-96)
St George Hospital	13	7	6	0	14	54 (25-81)	11	64 (31-89)
St Vincent's Hospital Sydney	11	4	7	0	12.5	36 (11-69)	7	57 (18-90)
St Vincent's Lismore Private Dialysis Centre	2	1	1	0	3.5	50 (1-99)	2	50 (1-99)
Sydney Adventist Hospital	3	1	2	0	4.5	33 (1-91)	3	33 (1-91)
Tamworth Hospital	6	1	4	1	12	20 (1-72)	1	100 (2-100)
Tweed Valley Hospital	6	0	6	0	5.5	0 (0-46)	5	0 (0-52)

continued on next page



continued from previous page

Centre	HD Patients	AVF or AVG	Vascular Catheter	Missing Access Data	Half-yearly Average of 2023 HD Patients	% of AVF or AVG (95 % CI)	Early Referral	% of Early Referrals with AVF or AVG
Wagga Wagga Base Hospital	11	5	6	0	14.5	45 (17-77)	6	50 (12-88)
Westmead Hospital	30	11	19	0	38	37 (20-56)	20	35 (15-59)
Wollongong Hospital	8	3	5	0	13	38 (9-76)	6	17 (0-64)
<b>Australian Capital Territory</b>	<b>26</b>	<b>14</b>	<b>12</b>	<b>0</b>	<b>25.5</b>	<b>54 (33-73)</b>	<b>20</b>	<b>70 (46-88)</b>
Access Nephrology	2	1	1	0	4.5	50 (1-99)	2	50 (1-99)
Canberra Hospital	24	13	11	0	21	54 (33-74)	18	72 (47-90)
<b>Victoria</b>	<b>261</b>	<b>126</b>	<b>132</b>	<b>3</b>	<b>307.5</b>	<b>49 (43-55)</b>	<b>216</b>	<b>56 (49-62)</b>
Alfred Hospital	24	13	11	0	26	54 (33-74)	23	57 (34-77)
Austin Hospital	18	3	15	0	31	17 (4-41)	16	19 (4-46)
Bendigo Hospital	5	0	5	0	9	0 (0-52)	2	0 (0-84)
Eastern Health Integrated Renal Services	7	4	3	0	19	57 (18-90)	7	57 (18-90)
Epworth Eastern Hospital	6	6	0	0	5.5	100 (54-100)	6	100 (54-100)
Epworth Richmond Hospital	8	3	5	0	5	38 (9-76)	8	38 (9-76)
Forest Hill Dialysis Centre	1	1	0	0	2.5	100 (2-100)	1	100 (2-100)
Malvern Dialysis Centre	8	5	2	1	5.5	71 (29-96)	4	100 (40-100)
Monash Medical Centre	61	31	30	0	58.5	51 (38-64)	54	57 (43-71)
Northern Health Service Melbourne	23	13	10	0	20	57 (34-77)	20	65 (41-85)
South Eastern Private Hospital Dialysis Centre	2	1	1	0	1.5	50 (1-99)	0	-
St Vincent's Hospital Melbourne	8	2	6	0	20	25 (3-65)	2	50 (1-99)
Sunshine Private Dialysis Centre Fresenius	1	1	0	0	0	100 (2-100)	0	-
The Royal Melbourne Hospital	36	20	14	2	44	59 (41-75)	28	68 (48-84)
University Hospital Geelong Barwon Health	13	6	7	0	22.5	46 (19-75)	12	50 (21-79)
Western Health Service	40	17	23	0	34	42 (27-59)	33	48 (31-66)
<b>Tasmania</b>	<b>20</b>	<b>10</b>	<b>10</b>	<b>0</b>	<b>15.5</b>	<b>50 (27-73)</b>	<b>17</b>	<b>53 (28-77)</b>
Launceston General Hospital	9	3	6	0	8.5	33 (7-70)	8	38 (9-76)
Royal Hobart Hospital	11	7	4	0	7	64 (31-89)	9	67 (30-93)
<b>South Australia</b>	<b>72</b>	<b>29</b>	<b>42</b>	<b>1</b>	<b>86.5</b>	<b>41 (29-53)</b>	<b>62</b>	<b>47 (34-60)</b>
Central Northern Adelaide Renal Service	61	22	38	1	63.5	37 (25-50)	55	40 (27-54)

continued on next page

continued from previous page

Centre	HD Patients	AVF or AVG	Vascular Catheter	Missing Access Data	Half-yearly Average of 2023 HD Patients	% of AVF or AVG (95 % CI)	Early Referral	% of Early Referrals with AVF or AVG
Flinders Medical Centre	11	7	4	0	23	64 (31-89)	7	100 (59-100)
<b>Northern Territory</b>	<b>54</b>	<b>24</b>	<b>29</b>	<b>1</b>	<b>58.5</b>	<b>45 (32-60)</b>	<b>49</b>	<b>49 (34-64)</b>
Alice Springs Hospital	24	11	12	1	27	48 (27-69)	22	50 (28-72)
Royal Darwin Hospital	30	13	17	0	31.5	43 (25-63)	27	48 (29-68)
<b>Western Australia</b>	<b>129</b>	<b>32</b>	<b>97</b>	<b>0</b>	<b>138</b>	<b>25 (18-33)</b>	<b>60</b>	<b>37 (25-50)</b>
Fiona Stanley Hospital	47	9	38	0	50	19 (9-33)	3	67 (9-99)
Royal Perth Hospital	46	13	33	0	52	28 (16-43)	36	31 (16-48)
Sir Charles Gairdner Hospital	36	10	26	0	36	28 (14-45)	21	43 (22-66)
<b>New Zealand</b>	<b>198</b>	<b>28</b>	<b>170</b>	<b>0</b>	<b>243.5</b>	<b>14 (10-20)</b>	<b>129</b>	<b>21 (14-29)</b>
Auckland City Hospital	24	2	22	0	32	8 (1-27)	19	11 (1-33)
Christchurch Hospital	5	1	4	0	17.5	20 (1-72)	4	25 (1-81)
Dunedin Hospital	4	2	2	0	3	50 (7-93)	3	67 (9-99)
Hawkes Bay Hospital	3	0	3	0	8	0 (0-71)	3	0 (0-71)
Middlemore Hospital	55	5	50	0	64.5	9 (3-20)	19	26 (9-51)
Palmerston North Hospital	4	1	3	0	14	25 (1-81)	4	25 (1-81)
Taranaki Hospital	2	1	1	0	3	50 (1-99)	2	50 (1-99)
Waikato Hospital	50	6	44	0	53.5	12 (5-24)	38	16 (6-31)
Waitemata Renal Service	22	3	19	0	22	14 (3-35)	17	18 (4-43)
Wellington Regional Hospital	14	2	12	0	15.5	14 (2-43)	11	18 (2-52)
Whangarei Hospital	15	5	10	0	10.5	33 (12-62)	9	44 (14-79)

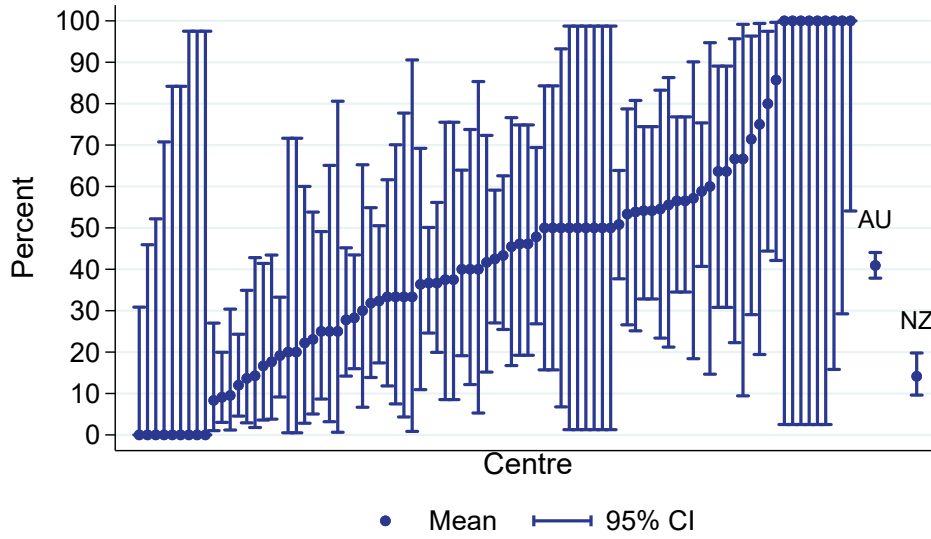
INTERIM

The following hospitals did not report any haemodialysis patients between 01 January 2024 and 30 June 2024:

State	Hospital
QLD	Gold Coast Private Hospital Mater Hospital, Brisbane Morayfield B.Braun Renal Care Centre Pindara Renal Unit Rockhampton Hospital
NSW	Gregory Hills B.Braun Renal Care Centre The Prince of Wales Hospital
VIC	Diamond Valley B.Braun Renal Care Centre Epworth Geelong Hospital North Melbourne B.Braun Renal Care Centre

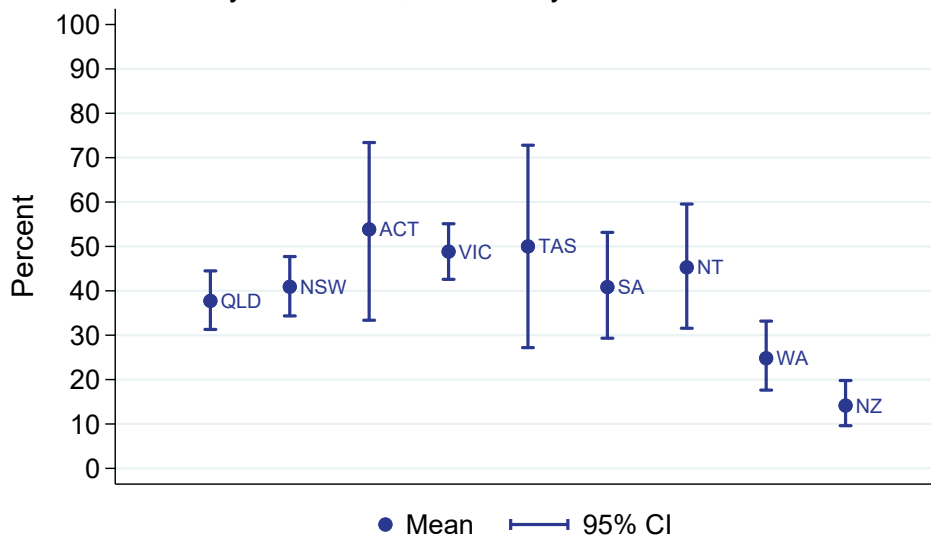
Vascular access at first HD (AVF/AVG)  
% of all HD starts, Adults

01 January 2024 - 30 June 2024



Vascular access at first HD (AVF/AVG)  
% of all HD starts, Adults

By Jurisdiction, 01 January 2024 - 30 June 2024



### 2.2.2 Paediatric

This table presents the numbers of patients beginning haemodialysis and the percentage starting with an AVF or AVG during the observation window by Centre, where HD was the first kidney replacement therapy. Patients are included in this paediatric report if they were treated at a paediatric hospital. In rare cases when patients younger than 18 years are treated at an adult centre, they are included in the adult report. Any patients 18 years and older treated at a paediatric hospital are included in this report. The half-yearly average number of new HD patients for 2023 from the analysis database is also provided to allow assessment of possible under-reporting. Finally, the total of Early Referrals (patients seen more than 3 months before first treatment) and the percentage of Early Referrals with AVF or AVG are also presented.

Centre	HD Patients	AVF or AVG	Vascular Catheter	Missing Access Data	Half-yearly Average of 2023 HD Patients	% of AVF or AVG (95 % CI)	Early Referral	% of Early Referrals with AVF or AVG
<b>Australia</b>	<b>2</b>	<b>0</b>	<b>2</b>	<b>0</b>	<b>3.5</b>	<b>0 (0-84)</b>	<b>2</b>	<b>0 (0-84)</b>
<b>Queensland</b> Child and Adolescent Renal Service	<b>1</b> 1	<b>0</b> 0	<b>1</b> 1	<b>0</b> 0	<b>1</b> 1	<b>0 (0-98)</b> 0 (0-98)	<b>1</b> 1	<b>0 (0-98)</b> 0 (0-98)
<b>Victoria</b> Royal Children's Hospital	<b>1</b> 1	<b>0</b> 0	<b>1</b> 1	<b>0</b> 0	<b>1</b> .5	<b>0 (0-98)</b> 0 (0-98)	<b>1</b> 1	<b>0 (0-98)</b> 0 (0-98)

## 2.3 HD Vascular Access Planning

### 2.3.1 Adult

This table presents the numbers of patients on haemodialysis at day 90 and the percentage starting haemodialysis with a permanent vascular access (an AVF or AVG) during the observation window by Centre. Modality changes of less than 30 days are ignored for the determination of modality at day 90. Patients are excluded from this adult report if they were treated at a paediatric hospital. In rare cases when patients younger than 18 years are treated at an adult centre, they are included in this adult report. Any patients 18 years and older treated at a paediatric hospital are excluded from this report. Some Centres did not report type of first access for all new HD patients. The percent beginning with a permanent access is based on the number of patients with data available for first access. The half-yearly average number of HD patients at day 90 for 2023 is also provided to allow assessment of possible under-reporting. Finally, the total of Early Referrals (patients seen more than 3 months before first treatment) and the percentage of Early Referrals with a permanent access are also presented.

Centre	HD Patients	AVF or AVG	Vascular Catheter	Missing Access Data	Half-yearly Average of 2023 HD Patients	% of AVF or AVG (95 % CI)	Early Referral	% of Early Referrals with AVF or AVG
<b>Australia</b>	<b>976</b>	<b>397</b>	<b>567</b>	<b>12</b>	<b>1155</b>	<b>41 (38-44)</b>	<b>742</b>	<b>50 (46-53)</b>
<b>Queensland</b>	<b>221</b>	<b>85</b>	<b>135</b>	<b>1</b>	<b>254</b>	<b>39 (32-45)</b>	<b>179</b>	<b>46 (38-53)</b>
Bundaberg Hospital	5	1	4	0	5.5	20 (1-72)	3	33 (1-91)
Cairns Hospital	24	10	14	0	29	42 (22-63)	19	53 (29-76)
Cairns Private Hospital	1	1	0	0	1	100 (2-100)	1	100 (2-100)
Chermside Dialysis Centre	6	4	2	0	5.5	67 (22-96)	5	80 (28-99)
Gold Coast University Hospital	22	7	14	1	17	33 (15-57)	13	54 (25-81)
Henry Dalziel Dialysis Clinic - Greenslopes	14	9	5	0	13	64 (35-87)	14	64 (35-87)
Hervey Bay Hospital	4	3	1	0	7	75 (19-99)	4	75 (19-99)
Ipswich Hospital	12	1	11	0	13.5	8 (0-38)	7	14 (0-58)
John Flynn Private Hospital	2	0	2	0	5	0 (0-84)	2	0 (0-84)
Mackay Base Hospital	5	4	1	0	9.5	80 (28-99)	5	80 (28-99)
Mater Hospital, Brisbane	2	0	2	0	6.5	0 (0-84)	1	0 (0-98)
Mater Hospital, Townsville	4	2	2	0	5	50 (7-93)	3	67 (9-99)
Metro South Kidney and Transplant Services	31	9	22	0	27	29 (14-48)	31	29 (14-48)
<i>Logan Hospital</i>	3	0	3	0	0	0 (0-71)	3	0 (0-71)
<i>Princess Alexandra Hospital</i>	28	9	19	0	27	32 (16-52)	28	32 (16-52)
Nambour Selangor Private Hospital	1	1	0	0	0	100 (2-100)	0	-
North Lakes Dialysis Centre	5	2	3	0	3	40 (5-85)	5	40 (5-85)
Pindara Renal Unit	1	0	1	0	4	0 (0-98)	1	0 (0-98)

continued on next page

continued from previous page

Centre	HD Patients	AVF or AVG	Vascular Catheter	Missing Access Data	Half-yearly Average of 2023 HD Patients	% of AVF or AVG (95 % CI)	Early Referral	% of Early Referrals with AVF or AVG
Rockhampton Hospital	3	0	3	0	6	0 (0-71)	2	0 (0-84)
Royal Brisbane and Women's Hospital	14	6	8	0	25	43 (18-71)	11	45 (17-77)
St Andrew's Ipswich Private Hospital	5	3	2	0	5.5	60 (15-95)	5	60 (15-95)
St Andrew's Toowoomba B.Braun'S Dialysis Clinic	4	2	2	0	1.5	50 (7-93)	2	100 (16-100)
Sunshine Coast University Hospital	20	8	12	0	16	40 (19-64)	16	44 (20-70)
The Wesley Hospital Brisbane	16	4	12	0	11.5	25 (7-52)	12	33 (10-65)
Toowoomba Hospital	7	5	2	0	9	71 (29-96)	6	83 (36-100)
Torres & Cape Kidney Health	1	1	0	0	1	100 (2-100)	1	100 (2-100)
Townsville University Hospital	12	2	10	0	18.5	17 (2-48)	10	20 (3-56)
<b>New South Wales</b>	<b>223</b>	<b>86</b>	<b>135</b>	<b>2</b>	<b>301.5</b>	<b>39 (32-46)</b>	<b>154</b>	<b>49 (41-57)</b>
Coffs Harbour Hospital	8	3	5	0	7	38 (9-76)	6	33 (4-78)
Concord Repatriation General Hospital	5	3	2	0	5.5	60 (15-95)	4	75 (19-99)
Dubbo Base Hospital	4	3	1	0	7	75 (19-99)	4	75 (19-99)
Gosford Hospital	17	5	12	0	17	29 (10-56)	9	44 (14-79)
Gregory Hills B.Braun Renal Care Centre	1	0	1	0	4	0 (0-98)	1	0 (0-98)
John Hunter Hospital	7	2	5	0	21.5	29 (4-71)	5	40 (5-85)
Lismore Base Hospital	5	4	1	0	9	80 (28-99)	5	80 (28-99)
Manning Rural Hospital	3	0	2	1	2	0 (0-84)	1	0 (0-98)
Mater Hospital, North Sydney	4	2	2	0	4	50 (7-93)	4	50 (7-93)
Mayo Private Hospital	2	1	1	0	1	50 (1-99)	1	0 (0-98)
Nepean Hospital	14	3	11	0	12	21 (5-51)	9	33 (7-70)
Newcastle Dialysis Centre	3	2	1	0	2.5	67 (9-99)	2	100 (16-100)
Orange Health Service	9	5	4	0	5.5	56 (21-86)	7	71 (29-96)
Port Macquarie Base Hospital	5	3	2	0	7	60 (15-95)	3	100 (29-100)
Royal North Shore Hospital	18	3	15	0	29	17 (4-41)	8	38 (9-76)
Royal Prince Alfred Hospital	17	9	8	0	15.5	53 (28-77)	16	56 (30-80)
South West Sydney Renal Service	9	1	8	0	46	11 (0-48)	9	11 (0-48)
St George Hospital	11	7	4	0	14	64 (31-89)	9	78 (40-97)
St Vincent's Hospital Sydney	6	2	4	0	10.5	33 (4-78)	3	67 (9-99)
St Vincent's Lismore Private Dialysis Centre	3	2	1	0	2.5	67 (9-99)	3	67 (9-99)
Sydney Adventist Hospital	6	2	4	0	4	33 (4-78)	6	33 (4-78)

continued on next page

continued from previous page

Centre	HD Patients	AVF or AVG	Vascular Catheter	Missing Access Data	Half-yearly Average of 2023 HD Patients	% of AVF or AVG (95 % CI)	Early Referral	% of Early Referrals with AVF or AVG
Tamworth Hospital	9	2	6	1	9	25 (3-65)	3	33 (1-91)
The Prince of Wales Hospital	4	3	1	0	7	75 (19-99)	4	75 (19-99)
Tweed Valley Hospital	6	0	6	0	4	0 (0-46)	6	0 (0-46)
Wagga Wagga Base Hospital	10	3	7	0	14.5	30 (7-65)	4	50 (7-93)
Westmead Hospital	27	10	17	0	29.5	37 (19-58)	16	44 (20-70)
Wollongong Hospital	10	6	4	0	9.5	60 (26-88)	6	50 (12-88)
<b>Australian Capital Territory</b>	<b>25</b>	<b>15</b>	<b>10</b>	<b>0</b>	<b>28.5</b>	<b>60 (39-79)</b>	<b>23</b>	<b>65 (43-84)</b>
Access Nephrology	6	5	1	0	4	83 (36-100)	6	83 (36-100)
Canberra Hospital	19	10	9	0	24.5	53 (29-76)	17	59 (33-82)
<b>Victoria</b>	<b>262</b>	<b>123</b>	<b>134</b>	<b>5</b>	<b>275</b>	<b>48 (42-54)</b>	<b>214</b>	<b>53 (46-60)</b>
Alfred Hospital	23	9	14	0	22	39 (20-61)	21	43 (22-66)
Austin Hospital	24	7	17	0	27	29 (13-51)	22	32 (14-55)
Bendigo Hospital	8	3	5	0	8.5	38 (9-76)	6	33 (4-78)
Eastern Health Integrated Renal Services	12	6	6	0	19.5	50 (21-79)	11	55 (23-83)
Epworth Eastern Hospital	8	8	0	0	4	100 (63-100)	8	100 (63-100)
Epworth Geelong Hospital	1	1	0	0	.5	100 (2-100)	1	100 (2-100)
Epworth Richmond Hospital	8	2	6	0	5.5	25 (3-65)	8	25 (3-65)
Forest Hill Dialysis Centre	2	2	0	0	2	100 (16-100)	2	100 (16-100)
Malvern Dialysis Centre	7	6	1	0	5	86 (42-100)	5	100 (48-100)
Monash Medical Centre	52	24	26	2	54	48 (34-63)	44	55 (39-70)
Northern Health Service Melbourne	19	11	8	0	17	58 (33-80)	18	61 (36-83)
South Eastern Private Hospital Dialysis Centre	3	2	1	0	.5	67 (9-99)	0	-
St Vincent's Hospital Melbourne	12	3	9	0	21	25 (5-57)	4	50 (7-93)
Sunshine Private Dialysis Centre Fresenius	1	1	0	0	1	100 (2-100)	0	-
The Royal Melbourne Hospital	42	20	20	2	35	50 (34-66)	33	58 (39-75)
University Hospital Geelong Barwon Health	15	5	9	1	16.5	36 (13-65)	12	42 (15-72)
Western Health Service	25	13	12	0	33	52 (31-72)	19	58 (33-80)
<b>Tasmania</b>	<b>15</b>	<b>6</b>	<b>9</b>	<b>0</b>	<b>12</b>	<b>40 (16-68)</b>	<b>11</b>	<b>55 (23-83)</b>
Launceston General Hospital	9	4	5	0	7	44 (14-79)	6	67 (22-96)

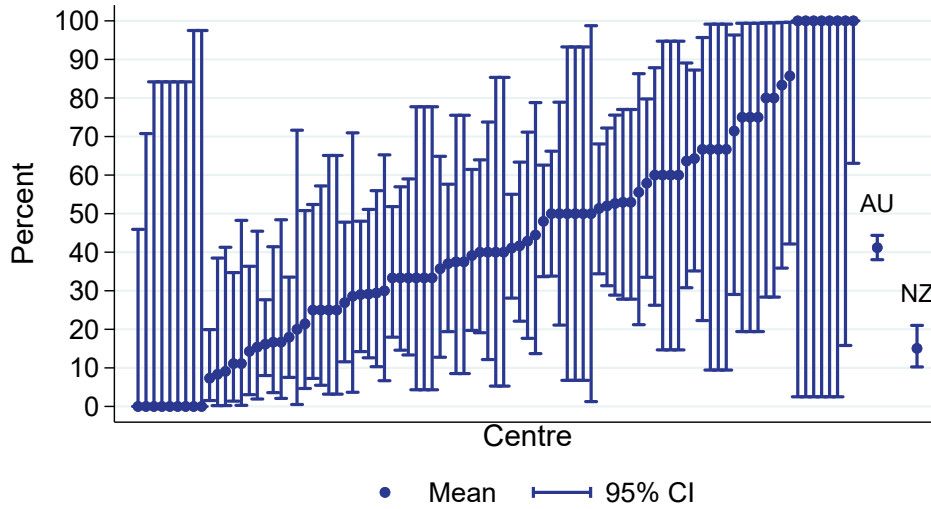
continued on next page



continued from previous page

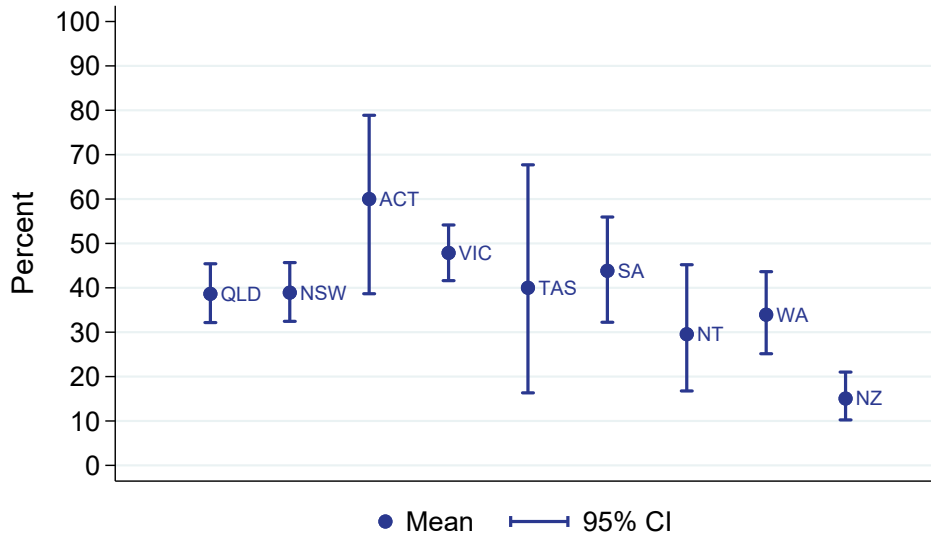
Centre	HD Patients	AVF or AVG	Vascular Catheter	Missing Access Data	Half-yearly Average of 2023 HD Patients	% of AVF or AVG (95 % CI)	Early Referral	% of Early Referrals with AVF or AVG
Royal Hobart Hospital	6	2	4	0	5	33 (4-78)	5	40 (5-85)
<b>South Australia</b>	<b>75</b>	<b>32</b>	<b>41</b>	<b>2</b>	<b>84.5</b>	<b>44 (32-56)</b>	<b>63</b>	<b>51 (38-64)</b>
Central Northern Adelaide Renal Service	58	23	33	2	62.5	41 (28-55)	50	46 (32-61)
Flinders Medical Centre	17	9	8	0	22	53 (28-77)	13	69 (39-91)
<b>Northern Territory</b>	<b>46</b>	<b>13</b>	<b>31</b>	<b>2</b>	<b>57</b>	<b>30 (17-45)</b>	<b>40</b>	<b>32 (19-49)</b>
Alice Springs Hospital	19	6	12	1	26.5	33 (13-59)	17	35 (14-62)
Royal Darwin Hospital	27	7	19	1	30.5	27 (12-48)	23	30 (13-53)
<b>Western Australia</b>	<b>109</b>	<b>37</b>	<b>72</b>	<b>0</b>	<b>142.5</b>	<b>34 (25-44)</b>	<b>58</b>	<b>53 (40-67)</b>
Fiona Stanley Hospital	39	7	32	0	51.5	18 (8-34)	6	50 (12-88)
Royal Perth Hospital	37	19	18	0	54	51 (34-68)	30	60 (41-77)
Sir Charles Gairdner Hospital	33	11	22	0	37	33 (18-52)	22	45 (24-68)
<b>New Zealand</b>	<b>186</b>	<b>28</b>	<b>158</b>	<b>0</b>	<b>223</b>	<b>15 (10-21)</b>	<b>142</b>	<b>19 (13-26)</b>
Auckland City Hospital	21	3	18	0	29	14 (3-36)	18	17 (4-41)
Christchurch Hospital	5	2	3	0	17	40 (5-85)	5	40 (5-85)
Dunedin Hospital	2	0	2	0	3	0 (0-84)	1	0 (0-98)
Hawkes Bay Hospital	2	0	2	0	6.5	0 (0-84)	2	0 (0-84)
Middlemore Hospital	62	10	52	0	54	16 (8-28)	37	24 (12-41)
Palmerston North Hospital	11	1	10	0	11	9 (0-41)	11	9 (0-41)
Taranaki Hospital	1	1	0	0	4	100 (2-100)	1	100 (2-100)
Waikato Hospital	41	3	38	0	44.5	7 (2-20)	36	8 (2-22)
Waitemata Renal Service	13	2	11	0	29	15 (2-45)	8	25 (3-65)
Wellington Regional Hospital	18	2	16	0	16	11 (1-35)	14	14 (2-43)
Whangarei Hospital	10	4	6	0	9	40 (12-74)	9	44 (14-79)

HD vascular access planning (AVF/AVG at first HD)  
 % of all HD patients at day 90, Adults  
 01 January 2024 - 30 June 2024



All HD patients at day 90 including those late referred

HD vascular access planning (AVF/AVG at first HD)  
 % of all HD patients at day 90, Adults  
 By Jurisdiction, 01 January 2024 - 30 June 2024



### 2.3.2 Paediatric

This table presents the numbers of patients on haemodialysis at day 90 and the percentage starting haemodialysis with a permanent vascular access (an AVF or AVG) during the observation window by Centre. Modality changes of less than 30 days are ignored for the determination of modality at day 90. Patients are included in this paediatric report if they were treated at a paediatric hospital. In rare cases when patients younger than 18 years are treated at an adult centre, they are included in the adult report. Any patients 18 years and older treated at a paediatric hospital are included in this report. The half-yearly average number of HD patients at day 90 for 2023 is also provided to allow assessment of possible under-reporting. Finally, the total of Early Referrals (patients seen more than 3 months before first treatment) and the percentage of Early Referrals with a permanent access are also presented.

Centre	HD Patients	AVF or AVG	Vascular Catheter	Missing Access Data	Half-yearly Average of 2023 HD Patients	% of AVF or AVG (95 % CI)	Early Referral	% of Early Referrals with AVF or AVG
<b>Australia</b>	<b>2</b>	<b>0</b>	<b>2</b>	<b>0</b>	<b>1.5</b>	<b>0 (0-84)</b>	<b>2</b>	<b>0 (0-84)</b>
<b>Queensland</b> Child and Adolescent Renal Service	<b>1</b> 1	<b>0</b> 0	<b>1</b> 1	<b>0</b> 0	<b>0</b> 0	<b>0 (0-98)</b> 0 (0-98)	<b>1</b> 1	<b>0 (0-98)</b> 0 (0-98)
<b>Victoria</b> Royal Children's Hospital	<b>1</b> 1	<b>0</b> 0	<b>1</b> 1	<b>0</b> 0	<b>.5</b> .5	<b>0 (0-98)</b> 0 (0-98)	<b>1</b> 1	<b>0 (0-98)</b> 0 (0-98)
<b>New Zealand</b> Starship Children's Hospital	<b>1</b> 1	<b>0</b> 0	<b>1</b> 1	<b>0</b> 0	<b>0</b> 0	<b>0 (0-98)</b> 0 (0-98)	<b>0</b> 0	<b>–</b> –

## 2.4 PD Catheter Planning

### 2.4.1 Adult

This table presents the numbers of patients on peritoneal dialysis at day 90 and the percentage starting kidney replacement therapy (KRT) with peritoneal dialysis during the observation window by Centre. Modality changes of less than 30 days are ignored for the determination of modality at day 90. Patients are excluded from this adult report if they were treated at a paediatric hospital. In rare cases when patients younger than 18 years are treated at an adult centre, they are included in this adult report. Any patients 18 years and older treated at a paediatric hospital are excluded from this report. The half-yearly average number of PD patients at day 90 for 2023 is also provided to allow assessment of possible under-reporting. Finally, the total of Early Referrals (patients seen more than 3 months before first treatment) and the percentage of Early Referrals starting with PD are also presented.

Centre	90-day PD Patients	Started KRT with PD	Did not start KRT with PD	Half-yearly Average of 2023 90-day PD Patients	% starting with PD (95 % CI)	Early Referral	% of Early Referrals starting with PD
<b>Australia</b>	<b>424</b>	<b>396</b>	<b>28</b>	<b>448.5</b>	<b>93 (91-96)</b>	<b>387</b>	<b>93 (90-96)</b>
<b>Queensland</b>	<b>72</b>	<b>64</b>	<b>8</b>	<b>76</b>	<b>89 (79-95)</b>	<b>69</b>	<b>88 (78-95)</b>
Bundaberg Hospital	2	2	0	2	100 (16-100)	2	100 (16-100)
Cairns Hospital	2	2	0	6.5	100 (16-100)	2	100 (16-100)
Gold Coast University Hospital	5	5	0	8	100 (48-100)	5	100 (48-100)
Hervey Bay Hospital	2	2	0	3.5	100 (16-100)	2	100 (16-100)
Ipswich Hospital	5	5	0	5.5	100 (48-100)	5	100 (48-100)
Mackay Base Hospital	2	1	1	2.5	50 (1-99)	2	50 (1-99)
Metro South Kidney and Transplant Services	22	19	3	22	86 (65-97)	22	86 (65-97)
<i>Logan Hospital</i>	3	3	0	0	100 (29-100)	3	100 (29-100)
<i>Princess Alexandra Hospital</i>	19	16	3	22	84 (60-97)	19	84 (60-97)
Royal Brisbane and Women's Hospital	13	12	1	8	92 (64-100)	12	92 (62-100)
Sunshine Coast University Hospital	6	5	1	2	83 (36-100)	6	83 (36-100)
Toowoomba Hospital	9	8	1	7.5	89 (52-100)	8	88 (47-100)
Townsville University Hospital	4	3	1	7	75 (19-99)	3	67 (9-99)
<b>New South Wales</b>	<b>133</b>	<b>123</b>	<b>10</b>	<b>157</b>	<b>92 (87-96)</b>	<b>120</b>	<b>92 (86-97)</b>
Concord Repatriation General Hospital	7	7	0	4.5	100 (59-100)	5	100 (48-100)
Dubbo Base Hospital	2	2	0	1.5	100 (16-100)	1	100 (2-100)
Gosford Hospital	1	1	0	4	100 (2-100)	1	100 (2-100)
John Hunter Hospital	11	11	0	8.5	100 (72-100)	11	100 (72-100)

continued on next page

continued from previous page

Centre	90-day PD Patients	Started KRT with PD	Did not start KRT with PD	Half-yearly Average of 2023 90-day PD Patients	% starting with PD (95 % CI)	Early Referral	% of Early Referrals starting with PD
Lismore Base Hospital	3	3	0	2.5	100 (29-100)	3	100 (29-100)
Manning Rural Hospital	3	1	2	1.5	33 (1-91)	2	0 (0-84)
Nepean Hospital	4	4	0	6	100 (40-100)	4	100 (40-100)
Orange Health Service	2	2	0	1.5	100 (16-100)	2	100 (16-100)
Royal North Shore Hospital	13	12	1	12.5	92 (64-100)	10	90 (55-100)
Royal Prince Alfred Hospital	5	4	1	7	80 (28-99)	5	80 (28-99)
South West Sydney Renal Service	18	18	0	31.5	100 (81-100)	18	100 (81-100)
St George Hospital	9	8	1	8	89 (52-100)	8	88 (47-100)
St Vincent's Hospital Sydney	2	2	0	3.5	100 (16-100)	1	100 (2-100)
Tamworth Hospital	2	2	0	3	100 (16-100)	2	100 (16-100)
The Prince of Wales Hospital	5	4	1	1.5	80 (28-99)	5	80 (28-99)
Tweed Valley Hospital	1	1	0	2.5	100 (2-100)	1	100 (2-100)
Westmead Hospital	35	33	2	47.5	94 (81-99)	31	97 (83-100)
Wollongong Hospital	10	8	2	8	80 (44-97)	10	80 (44-97)
<b>Australian Capital Territory</b>	<b>8</b>	<b>7</b>	<b>1</b>	<b>4.5</b>	<b>88 (47-100)</b>	<b>8</b>	<b>88 (47-100)</b>
Canberra Hospital	8	7	1	4.5	88 (47-100)	8	88 (47-100)
<b>Victoria</b>	<b>114</b>	<b>108</b>	<b>6</b>	<b>117.5</b>	<b>95 (89-98)</b>	<b>101</b>	<b>95 (89-98)</b>
Alfred Hospital	10	9	1	8.5	90 (55-100)	10	90 (55-100)
Austin Hospital	2	2	0	6.5	100 (16-100)	2	100 (16-100)
Bendigo Hospital	9	8	1	3	89 (52-100)	8	88 (47-100)
Eastern Health Integrated Renal Services	4	4	0	9.5	100 (40-100)	4	100 (40-100)
Monash Medical Centre	28	28	0	28	100 (88-100)	22	100 (85-100)
Northern Health Service Melbourne	8	7	1	5.5	88 (47-100)	7	86 (42-100)
St Vincent's Hospital Melbourne	18	17	1	13	94 (73-100)	17	100 (80-100)
The Royal Melbourne Hospital	15	15	0	18.5	100 (78-100)	12	100 (74-100)
University Hospital Geelong Barwon Health	6	4	2	8.5	67 (22-96)	6	67 (22-96)
Western Health Service	14	14	0	16.5	100 (77-100)	13	100 (75-100)
<b>Tasmania</b>	<b>9</b>	<b>9</b>	<b>0</b>	<b>7.5</b>	<b>100 (66-100)</b>	<b>9</b>	<b>100 (66-100)</b>

continued on next page

continued from previous page

Centre	90-day PD Patients	Started KRT with PD	Did not start KRT with PD	Half-yearly Average of 2023 90-day PD Patients	% starting with PD (95 % CI)	Early Referral	% of Early Referrals starting with PD
Launceston General Hospital	6	6	0	5	100 (54-100)	6	100 (54-100)
Royal Hobart Hospital	3	3	0	2.5	100 (29-100)	3	100 (29-100)
<b>South Australia</b>	<b>35</b>	<b>35</b>	<b>0</b>	<b>28</b>	<b>100 (90-100)</b>	<b>34</b>	<b>100 (90-100)</b>
Central Northern Adelaide Renal Service	28	28	0	23	100 (88-100)	28	100 (88-100)
Flinders Medical Centre	7	7	0	5	100 (59-100)	6	100 (54-100)
<b>Northern Territory</b>	<b>6</b>	<b>5</b>	<b>1</b>	<b>9.5</b>	<b>83 (36-100)</b>	<b>6</b>	<b>83 (36-100)</b>
Royal Darwin Hospital	6	5	1	8	83 (36-100)	6	83 (36-100)
<b>Western Australia</b>	<b>47</b>	<b>45</b>	<b>2</b>	<b>48.5</b>	<b>96 (85-99)</b>	<b>40</b>	<b>95 (83-99)</b>
Fiona Stanley Hospital	17	17	0	18.5	100 (80-100)	13	100 (75-100)
Royal Perth Hospital	14	13	1	9.5	93 (66-100)	11	91 (59-100)
Sir Charles Gairdner Hospital	16	15	1	20.5	94 (70-100)	16	94 (70-100)
<b>New Zealand</b>	<b>85</b>	<b>76</b>	<b>9</b>	<b>115.5</b>	<b>89 (81-95)</b>	<b>73</b>	<b>90 (81-96)</b>
Auckland City Hospital	7	7	0	5.5	100 (59-100)	7	100 (59-100)
Bay of Plenty Renal Unit	2	1	1	4	50 (1-99)	1	100 (2-100)
Christchurch Hospital	6	6	0	9	100 (54-100)	5	100 (48-100)
Dunedin Hospital	3	3	0	8.5	100 (29-100)	2	100 (16-100)
Hawkes Bay Hospital	3	2	1	6.5	67 (9-99)	3	67 (9-99)
Middlemore Hospital	18	14	4	25.5	78 (52-94)	15	80 (52-96)
Taranaki Hospital	4	3	1	2.5	75 (19-99)	4	75 (19-99)
Waikato Hospital	15	13	2	25.5	87 (60-98)	13	85 (55-98)
Waitemata Renal Service	5	5	0	7	100 (48-100)	4	100 (40-100)
Wellington Regional Hospital	16	16	0	15.5	100 (79-100)	15	100 (78-100)
Whangarei Hospital	6	6	0	2	100 (54-100)	4	100 (40-100)



### 2.4.2 Paediatric

This table presents the numbers of patients on peritoneal dialysis at day 90 and the percentage starting kidney replacement therapy (KRT) with peritoneal dialysis during the observation window by Centre. Modality changes of less than 30 days are ignored for the determination of modality at day 90. Patients are included in this paediatric report if they were treated at a paediatric hospital. In rare cases when patients younger than 18 years are treated at an adult centre, they are included in the adult report. Any patients 18 years and older treated at a paediatric hospital are included in this report. The half-yearly average number of HD patients at day 90 for 2023 is also provided to allow assessment of possible under-reporting. Finally, the total of Early Referrals (patients seen more than 3 months before first treatment) and the percentage of Early Referrals starting with PD are also presented.

Centre	90-day PD Patients	Started KRT with PD	Did not start KRT with PD	Half-yearly Average of 2023 90-day PD Patients	% starting with PD (95 % CI)	Early Referral	% of Early Referrals starting with PD
<b>Australia</b>	<b>9</b>	<b>9</b>	<b>0</b>	<b>9.5</b>	<b>100 (66-100)</b>	<b>7</b>	<b>100 (59-100)</b>
<b>Queensland</b> Child and Adolescent Renal Service	<b>6</b> 6	<b>6</b> 6	<b>0</b> 0	<b>3.5</b> 3.5	<b>100 (54-100)</b> 100 (54-100)	<b>5</b> 5	<b>100 (48-100)</b> 100 (48-100)
<b>Victoria</b>	<b>3</b>	<b>3</b>	<b>0</b>	<b>3</b>	<b>100 (29-100)</b>	<b>2</b>	<b>100 (16-100)</b>
Monash Children's Centre	1	1	0	1	100 (2-100)	0	-
Royal Children's Hospital	2	2	0	2	100 (16-100)	2	100 (16-100)
<b>New Zealand</b>	<b>2</b>	<b>2</b>	<b>0</b>	<b>1</b>	<b>100 (16-100)</b>	<b>2</b>	<b>100 (16-100)</b>
Starship Children's Hospital	2	2	0	1	100 (16-100)	2	100 (16-100)



### 3 Transplantation Wait Listing

#### 3.1 Adult

This table presents the numbers of patients aged <65 years who have received kidney replacement therapy (KRT) for 6 months, and the percentage who are transplanted or on the wait list within 6 months of KRT start during the observation window by Centre. The 6 month follow-up time means these patients commenced KRT between Jul 2023 and Dec 2023. The number of patients aged <65 years commencing KRT between Jul 2023 and Dec 2023 is also provided from the analysis dataset to allow assessment of possible under-reporting. Patients are excluded from this adult report if they were treated at a paediatric hospital. In rare cases when patients younger than 18 years are treated at an adult centre, they are included in this adult report. Any patients 18 years and older treated at a paediatric hospital are excluded from this report. This quality indicator is presented for Australia only as New Zealand transplant wait listing data is not currently available to ANZDATA.

Centre	Patients	Transplanted or on wait list within 6 months	Neither transplanted nor on wait list	Jul 2023-Dec 2023 Patients	% transplanted or on wait list within 6 months (95 % CI)
<b>Australia</b>	<b>874</b>	<b>130</b>	<b>744</b>	<b>870</b>	<b>15 (13-17)</b>
<b>Queensland</b>	<b>180</b>	<b>17</b>	<b>163</b>	<b>179</b>	<b>9 (6-15)</b>
Bundaberg Hospital	3	0	3	3	0 (0-71)
Cairns Hospital	18	1	17	18	6 (0-27)
Chermside Dialysis Centre	1	1	0	1	100 (2-100)
Gold Coast Private Hospital	1	0	1	1	0 (0-98)
Gold Coast University Hospital	7	0	7	7	0 (0-41)
Henry Dalziel Dialysis Clinic - Greenslopes	3	0	3	3	0 (0-71)
Hervey Bay Hospital	3	0	3	3	0 (0-71)
Ipswich Hospital	15	0	15	15	0 (0-22)
John Flynn Private Hospital	1	0	1	1	0 (0-98)
Mackay Base Hospital	10	1	9	10	10 (0-45)
Mater Hospital, Brisbane	4	1	3	4	25 (1-81)
Mater Hospital, Townsville	1	0	1	1	0 (0-98)
Metro South Kidney and Transplant Services	49	4	45	49	8 (2-20)
<i>Princess Alexandra Hospital</i>	<i>49</i>	<i>4</i>	<i>45</i>	<i>49</i>	<i>8 (2-20)</i>
North Lakes Dialysis Centre	1	0	1	1	0 (0-98)
Rockhampton Hospital	3	0	3	3	0 (0-71)
Royal Brisbane and Women's Hospital	16	3	13	16	19 (4-46)
St Andrew's Toowoomba B.Braun'S Dialysis Clinic	1	0	1	1	0 (0-98)

continued on next page

continued from previous page

Centre	Patients	Transplanted or on wait list within 6 months	Neither transplanted nor on wait list	Jul 2023-Dec 2023 Patients	% transplanted or on wait list within 6 months (95 % CI)
Sunshine Coast University Hospital	16	4	12	16	25 (7-52)
The Wesley Hospital Brisbane	4	0	4	4	0 (0-60)
Toowoomba Hospital	11	1	10	11	9 (0-41)
Torres & Cape Kidney Health	1	1	0	1	100 (2-100)
Townsville University Hospital	11	0	11	10	0 (0-28)
<b>New South Wales</b>	<b>222</b>	<b>35</b>	<b>187</b>	<b>220</b>	<b>16 (11-21)</b>
Bathurst Base Hospital	1	0	1	1	0 (0-98)
Coffs Harbour Hospital	5	1	4	5	20 (1-72)
Concord Repatriation General Hospital	7	2	5	7	29 (4-71)
Dubbo Base Hospital	7	2	5	7	29 (4-71)
Gosford Hospital	5	2	3	5	40 (5-85)
John Hunter Hospital	16	2	14	16	12 (2-38)
Lismore Base Hospital	8	1	7	8	12 (0-53)
Manning Rural Hospital	5	0	5	5	0 (0-52)
Mater Hospital, North Sydney	2	0	2	2	0 (0-84)
Nepean Hospital	4	0	4	4	0 (0-60)
Newcastle Dialysis Centre	1	0	1	1	0 (0-98)
Orange Health Service	6	1	5	6	17 (0-64)
Port Macquarie Base Hospital	3	0	3	3	0 (0-71)
Royal North Shore Hospital	24	4	20	22	17 (5-37)
Royal Prince Alfred Hospital	11	5	6	11	45 (17-77)
South West Sydney Renal Service	21	3	18	21	14 (3-36)
St George Hospital	15	5	10	15	33 (12-62)
St Vincent's Hospital Sydney	10	4	6	10	40 (12-74)
Tamworth Hospital	5	0	5	5	0 (0-52)
The Prince of Wales Hospital	5	0	5	5	0 (0-52)
Tweed Valley Hospital	6	0	6	6	0 (0-46)
Wagga Wagga Base Hospital	4	0	4	4	0 (0-60)
Westmead Hospital	40	1	39	40	2 (0-13)
Wollongong Hospital	11	2	9	11	18 (2-52)

continued on next page

continued from previous page

Centre	Patients	Transplanted or on wait list within 6 months	Neither transplanted nor on wait list	Jul 2023-Dec 2023 Patients	% transplanted or on wait list within 6 months (95 % CI)
<b>Australian Capital Territory</b>	<b>15</b>	<b>4</b>	<b>11</b>	<b>15</b>	<b>27 (8-55)</b>
Access Nephrology	3	2	1	3	67 (9-99)
Canberra Hospital	12	2	10	12	17 (2-48)
<b>Victoria</b>	<b>228</b>	<b>48</b>	<b>180</b>	<b>227</b>	<b>21 (16-27)</b>
Alfred Hospital	15	5	10	15	33 (12-62)
Austin Hospital	16	8	8	16	50 (25-75)
Bendigo Hospital	11	2	9	11	18 (2-52)
Diamond Valley B.Braun Renal Care Centre	1	0	1	1	0 (0-98)
Eastern Health Integrated Renal Services	17	0	17	17	0 (0-20)
Epworth Eastern Hospital	1	0	1	1	0 (0-98)
Epworth Richmond Hospital	5	1	4	5	20 (1-72)
Forest Hill Dialysis Centre	1	0	1	1	0 (0-98)
Malvern Dialysis Centre	1	0	1	1	0 (0-98)
Monash Medical Centre	52	17	35	52	33 (20-47)
Northern Health Service Melbourne	17	0	17	17	0 (0-20)
St Vincent's Hospital Melbourne	13	3	10	13	23 (5-54)
The Royal Melbourne Hospital	37	11	26	37	30 (16-47)
University Hospital Geelong Barwon Health	14	1	13	14	7 (0-34)
Western Health Service	27	0	27	26	0 (0-13)
<b>Tasmania</b>	<b>17</b>	<b>7</b>	<b>10</b>	<b>17</b>	<b>41 (18-67)</b>
Launceston General Hospital	9	3	6	9	33 (7-70)
Royal Hobart Hospital	8	4	4	8	50 (16-84)
<b>South Australia</b>	<b>58</b>	<b>4</b>	<b>54</b>	<b>58</b>	<b>7 (2-17)</b>
Central Northern Adelaide Renal Service	46	3	43	46	7 (1-18)
Flinders Medical Centre	12	1	11	12	8 (0-38)
<b>Northern Territory</b>	<b>60</b>	<b>2</b>	<b>58</b>	<b>60</b>	<b>3 (0-12)</b>
Alice Springs Hospital	23	0	23	23	0 (0-15)
Royal Darwin Hospital	37	2	35	37	5 (1-18)

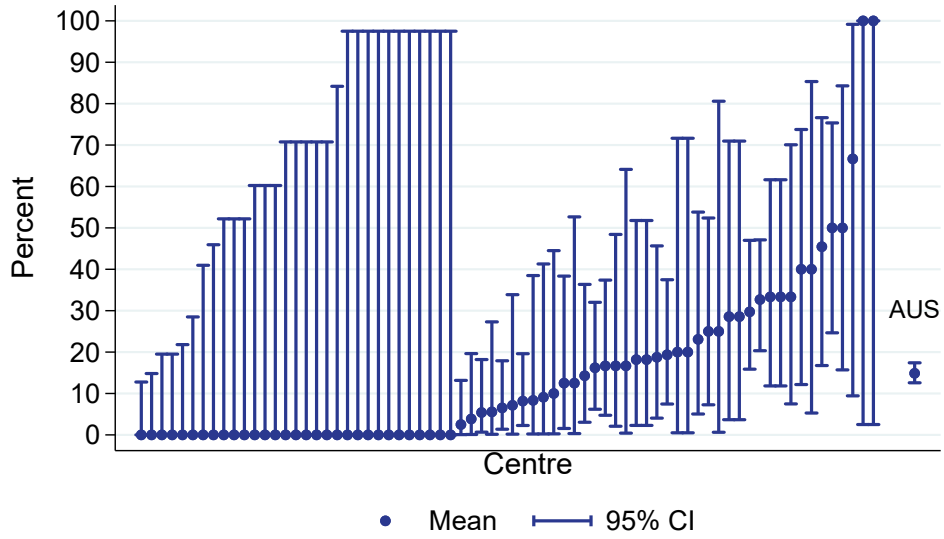
continued on next page

continued from previous page

Centre	Patients	Transplanted or on wait list within 6 months	Neither transplanted nor on wait list	Jul 2023-Dec 2023 Patients	% transplanted or on wait list within 6 months (95 % CI)
<b>Western Australia</b>	<b>94</b>	<b>13</b>	<b>81</b>	<b>94</b>	<b>14 (8-22)</b>
Fiona Stanley Hospital	37	6	31	37	16 (6-32)
Royal Perth Hospital	26	1	25	26	4 (0-20)
Sir Charles Gairdner Hospital	31	6	25	31	19 (7-37)

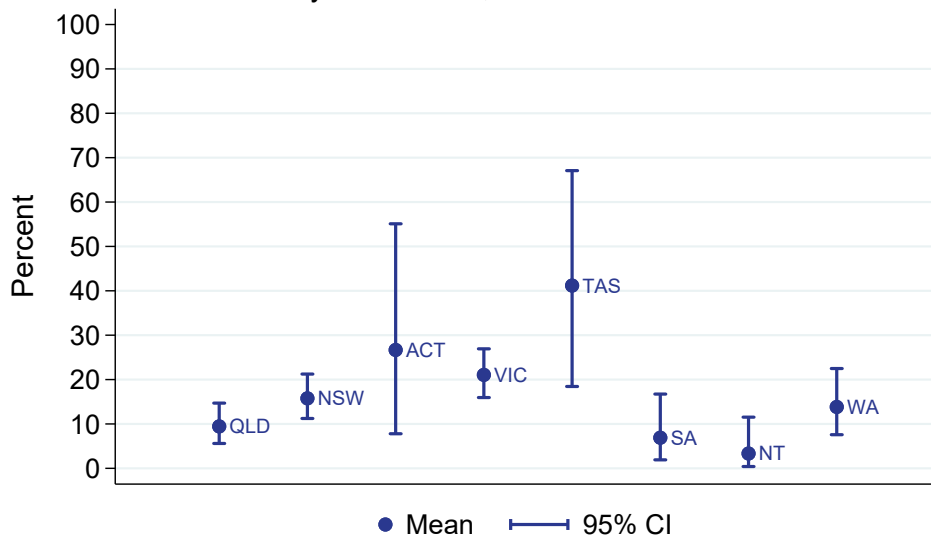
Transplantation wait listing (had a tx or on wl within 6 months)  
 % of all new adult patients aged <65 years

Jul 2023 - Dec 2023



Transplantation wait listing (had a tx or on wl within 6 months)  
 % of all new adult patients aged <65 years

By Jurisdiction, Jul 2023 - Dec 2023



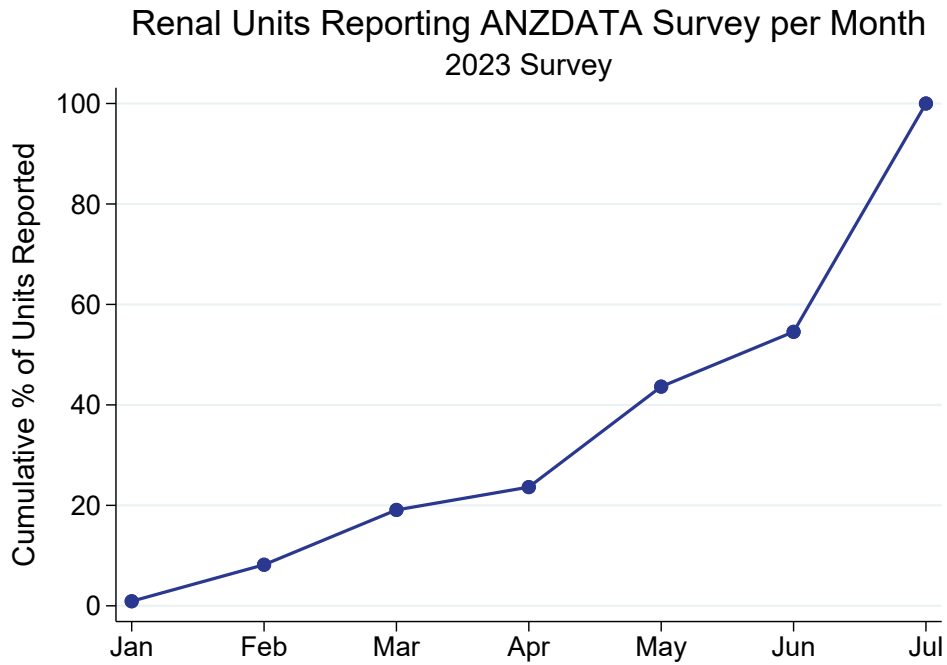
### 3.2 Paediatric

This table presents the numbers of patients aged  $\geq 2$  years who have received kidney replacement therapy (KRT) for 6 months, and the percentage who are transplanted or on the wait list within 6 months of KRT start during the observation window by Centre. The 6 month follow-up time means these patients commenced KRT between Jul 2023 and Dec 2023. The number of patients aged  $\geq 2$  years commencing KRT between Jul 2023 and Dec 2023 is also provided from the analysis database to allow assessment of possible under-reporting. Patients are included in this paediatric report if they were treated at a paediatric hospital. In rare cases when patients younger than 18 years are treated at an adult centre, they are included in the adult report. Any patients 18 years and older treated at a paediatric hospital are included in this report. This quality indicator is presented for Australia only as New Zealand transplant wait listing data is not currently available to ANZDATA.

Centre	Patients	Transplanted or on wait list within 6 months	Neither transplanted nor on wait list	Jul 2023-Dec 2023 Patients	% transplanted or on wait list within 6 months (95 % CI)
<b>Australia</b>	<b>12</b>	<b>5</b>	<b>7</b>	<b>12</b>	<b>42 (15-72)</b>
<b>Queensland</b>	<b>5</b>	<b>2</b>	<b>3</b>	<b>5</b>	<b>40 (5-85)</b>
Child and Adolescent Renal Service	5	2	3	5	40 (5-85)
<b>New South Wales</b>	<b>2</b>	<b>1</b>	<b>1</b>	<b>2</b>	<b>50 (1-99)</b>
Sydney Children's Hospital	1	0	1	1	0 (0-98)
The Children's Hospital at Westmead	1	1	0	1	100 (2-100)
<b>Victoria</b>	<b>4</b>	<b>2</b>	<b>2</b>	<b>4</b>	<b>50 (7-93)</b>
Monash Children's Centre	1	0	1	1	0 (0-98)
Royal Children's Hospital	3	2	1	3	67 (9-99)
<b>Western Australia</b>	<b>1</b>	<b>0</b>	<b>1</b>	<b>1</b>	<b>0 (0-98)</b>
Perth Children's Hospital	1	0	1	1	0 (0-98)

#### 4 ANZDATA annual data survey timeliness

This figure shows the cumulative percentage of renal units that returned their annual ANZDATA survey each month following 31 December 2023. The date of survey return is the date ANZDATA received notification that annual data submission and data validations have been addressed for data lock. This survey return date identifies a Renal Unit is complete for quality indicator reporting.



This table presents the month of annual ANZDATA survey return by each renal unit following 31 December 2023.

Centre	Month of return
<b>Queensland</b>	
Bundaberg Hospital	Mar
Cairns Hospital	May
Cairns Private Hospital	Feb
Chermside Dialysis Centre	Jun
Child and Adolescent Renal Service	May
Gold Coast Private Hospital	Jul
Gold Coast University Hospital	Jul
Henry Dalziel Dialysis Clinic - Greenslopes	Jul
Hervey Bay Hospital	Jun
Ipswich Hospital	May
John Flynn Private Hospital	May
Mackay Base Hospital	Feb
Mater Hospital, Brisbane	Feb
Mater Hospital, Townsville	May
Morayfield B.Braun Renal Care Centre	Jul
Mount Isa Base Hospital	Jul
Nambour Selangor Private Hospital	Mar
North Lakes Dialysis Centre	Jul
Pindara Renal Unit	Apr
Princess Alexandra Hospital	May
Queensland Kidney Transplant Service	May
Rockhampton Hospital	Jul
Royal Brisbane and Women's Hospital	Jul
St Andrew's Ipswich Private Hospital	Jun
St Andrew's Toowoomba B.Braun'S Dialysis Clinic	Feb
Sunshine Coast University Hospital	Apr
Sunshine Coast University Private Hospital	May
The Wesley Hospital Brisbane	Jul
Toowoomba Hospital	Feb
Torres & Cape Kidney Health	Jul
Townsville University Hospital	Jul
<b>New South Wales</b>	
Bathurst Base Hospital	May
Coffs Harbour Hospital	Jul
Concord Repatriation General Hospital	Jul
Dubbo Base Hospital	Jul
Gosford Hospital	Jul
Gregory Hills B.Braun Renal Care Centre	May
John Hunter Hospital	Jul
Lismore Base Hospital	May
Liverpool Private Dialysis Centre	Jul
Manning Rural Hospital	Jul
Mater Hospital, North Sydney	May
Mayo Private Hospital	May
Nepean Hospital	Jul
Newcastle Dialysis Centre	Mar
Orange Health Service	Jul
Port Macquarie Base Hospital	May

*continued on next page*



continued from previous page

Centre	Month of return
Port Macquarie Private Hospital	Feb
Royal North Shore Hospital	Jul
Royal Prince Alfred Hospital	Jul
South West Sydney Renal Service	Jul
St George Hospital	Mar
St Vincent's Hospital Sydney	Jun
St Vincent's Lismore Private Dialysis Centre	Feb
Sydney Adventist Hospital	Apr
Sydney Children's Hospital	Mar
Tamworth Hospital	Apr
The Children's Hospital at Westmead	Jul
The Prince of Wales Hospital	Jul
Tweed Valley Hospital	Jun
Wagga Wagga Base Hospital	Jul
Westmead Hospital	Jul
Wollongong Hospital	Jul
<b>Australian Capital Territory</b>	
Access Nephrology	Jul
Canberra Hospital	Jun
<b>Victoria</b>	
Alfred Hospital	Jul
Austin Hospital	Jul
Bendigo Hospital	Mar
Diamond Valley B.Braun Renal Care Centre	Jun
Eastern Health Integrated Renal Services	Jul
Epworth Eastern Hospital	Feb
Epworth Geelong Hospital	Apr
Epworth Richmond Hospital	Mar
Forest Hill Dialysis Centre	Jul
Malvern Dialysis Centre	Mar
Monash Children's Centre	Mar
Monash Medical Centre	Jul
North Melbourne B.Braun Renal Care Centre	May
Northern Health Service Melbourne	May
Royal Children's Hospital	Mar
South Eastern Private Hospital Dialysis Centre	Jul
St Vincent's Hospital Melbourne	Jul
Sunshine Private Dialysis Centre Fresenius	Jul
The Royal Melbourne Hospital	Jul
University Hospital Geelong Barwon Health	Jul
Western Health Service	Jul
<b>Tasmania</b>	
Launceston General Hospital	May
Royal Hobart Hospital	May
<b>South Australia</b>	
Central Northern Adelaide Renal Service	Jun
Flinders Medical Centre	Mar
Women's and Children's Hospital	May

continued on next page

*continued from previous page*

Centre	Month of return
<b>Northern Territory</b>	
Alice Springs Hospital	Jul
Royal Darwin Hospital	Jul
<b>Western Australia</b>	
Fiona Stanley Hospital	Jul
Perth Children's Hospital	May
Royal Perth Hospital	Jul
Sir Charles Gairdner Hospital	Jul
<b>New Zealand</b>	
Auckland City Hospital	Jun
Bay of Plenty Renal Unit	Jun
Christchurch Hospital	Jul
Dunedin Hospital	May
Hawkes Bay Hospital	Mar
Middlemore Hospital	Jul
Palmerston North Hospital	Jul
Starship Children's Hospital	Jan
Taranaki Hospital	May
Waikato Hospital	Jul
Waitemata Renal Service	Jul
Wellington Regional Hospital	Jun
Whangarei Hospital	Jun

## 5 Kidney Replacement Therapy (KRT) Modality

### 5.1 Incident Modality

#### 5.1.1 Adult

This table presents the numbers (N) of incident kidney replacement therapy (KRT) patients during the observation window by modality at commencement and centre. Modality is categorised as pre-emptive kidney transplant (TX), peritoneal dialysis (PD), home haemodialysis (including commencing training) and community house haemodialysis (HHD\*) and facility haemodialysis (FacHD). Also presented are the percentages (%) of each modality out of the total incident KRT cohort. The half-yearly average number of incident patients for 2023 from the analysis database is also provided to allow assessment of possible under-reporting. Patients are excluded from this adult report if they were treated at a paediatric hospital. In rare cases when patients younger than 18 years are treated at an adult centre, they are included in this adult report. Any patients 18 years and older treated at a paediatric hospital are excluded from this report.

Centre	N KRT	N TX	% TX	N PD	% PD	N HHD*	% HHD*	N FacHD	% FacHD	Half-yearly Average of 2023 N KRT
<b>Australia</b>	<b>1441</b>	<b>43</b>	<b>3</b>	<b>392</b>	<b>27</b>	<b>30</b>	<b>2</b>	<b>976</b>	<b>68</b>	<b>1696</b>
<b>Queensland</b>	<b>302</b>	<b>6</b>	<b>2</b>	<b>74</b>	<b>25</b>	<b>7</b>	<b>2</b>	<b>215</b>	<b>71</b>	<b>360</b>
Bundaberg Hospital	11	0	0	2	18	0	0	9	82	7
Cairns Hospital	24	0	0	1	4	2	8	21	88	32
Cairns Private Hospital	2	0	0	0	0	0	0	2	100	1
Chermside Dialysis Centre	3	0	0	0	0	0	0	3	100	8
Gold Coast University Hospital	25	0	0	4	16	2	8	19	76	24
Henry Dalziel Dialysis Clinic - Greenslopes	15	0	0	0	0	0	0	15	100	19
Hervey Bay Hospital	7	0	0	1	14	0	0	6	86	9
Ipswich Hospital	15	0	0	5	33	0	0	10	67	21
John Flynn Private Hospital	2	0	0	0	0	0	0	2	100	6
Mackay Base Hospital	8	0	0	1	12	0	0	7	88	13
Mater Hospital, Townsville	1	0	0	0	0	0	0	1	100	6
Metro South Kidney and Transplant Services	71	4	6	33	46	3	4	31	44	61
<i>Logan Hospital</i>	22	0	0	14	64	0	0	8	36	0
<i>Princess Alexandra Hospital</i>	47	4	9	19	40	3	6	21	45	61
<i>Redlands Hospital</i>	2	0	0	0	0	0	0	2	100	0
Nambour Selangor Private Hospital	1	0	0	0	0	0	0	1	100	0
North Lakes Dialysis Centre	1	0	0	0	0	0	0	1	100	4
Queensland Kidney Transplant Service	1	1	100	0	0	0	0	0	0	0

continued on next page

continued from previous page

Centre	N KRT	N TX	% TX	N PD	% PD	N HHD*	% HHD*	N FacHD	% FacHD	Half-yearly Average of 2023 N KRT
Royal Brisbane and Women's Hospital	30	0	0	17	57	0	0	13	43	29
St Andrew's Ipswich Private Hospital	3	0	0	0	0	0	0	3	100	6
St Andrew's Toowoomba B.Braun'S Dialysis Clinic	5	0	0	0	0	0	0	5	100	2
Sunshine Coast University Hospital	12	1	8	2	17	0	0	9	75	23
Sunshine Coast University Private Hospital	2	0	0	0	0	0	0	2	100	2
The Wesley Hospital Brisbane	21	0	0	0	0	0	0	21	100	22
Toowoomba Hospital	14	0	0	3	21	0	0	11	79	19
Torres & Cape Kidney Health	1	0	0	0	0	0	0	1	100	1
Townsville University Hospital	27	0	0	5	19	0	0	22	81	22
<b>New South Wales</b>	<b>337</b>	<b>15</b>	<b>4</b>	<b>100</b>	<b>30</b>	<b>11</b>	<b>3</b>	<b>211</b>	<b>63</b>	<b>474</b>
Bathurst Base Hospital	1	0	0	0	0	0	0	1	100	2
Coffs Harbour Hospital	6	1	17	0	0	0	0	5	83	10
Concord Repatriation General Hospital	17	0	0	6	35	0	0	11	65	11
Dubbo Base Hospital	12	1	8	1	8	0	0	10	83	8
Gosford Hospital	14	0	0	1	7	0	0	13	93	22
John Hunter Hospital	21	1	5	12	57	0	0	8	38	31
Lismore Base Hospital	5	1	20	0	0	0	0	4	80	14
Manning Rural Hospital	4	0	0	1	25	0	0	3	75	4
Mater Hospital, North Sydney	1	0	0	0	0	0	0	1	100	6
Mayo Private Hospital	1	0	0	0	0	0	0	1	100	0
Nepean Hospital	19	0	0	2	11	0	0	17	89	17
Newcastle Dialysis Centre	2	0	0	0	0	0	0	2	100	2
Orange Health Service	10	0	0	0	0	0	0	10	100	8
Port Macquarie Base Hospital	9	1	11	0	0	0	0	8	89	8
Royal North Shore Hospital	27	1	4	14	52	1	4	11	41	46
Royal Prince Alfred Hospital	25	2	8	3	12	1	4	19	76	28
South West Sydney Renal Service	18	2	11	10	56	4	22	2	11	60
St George Hospital	22	1	5	8	36	2	9	11	50	21
St Vincent's Hospital Sydney	12	0	0	1	8	0	0	11	92	15
St Vincent's Lismore Private Dialysis Centre	2	0	0	0	0	0	0	2	100	4
Sydney Adventist Hospital	3	0	0	0	0	0	0	3	100	4

continued on next page

continued from previous page

Centre	N KRT	N TX	% TX	N PD	% PD	N HHD*	% HHD*	N FacHD	% FacHD	Half-yearly Average of 2023 N KRT
Tamworth Hospital	10	0	0	4	40	0	0	6	60	14
The Prince of Wales Hospital	1	1	100	0	0	0	0	0	0	12
Tweed Valley Hospital	6	0	0	0	0	0	0	6	100	8
Wagga Wagga Base Hospital	11	0	0	0	0	0	0	11	100	16
Westmead Hospital	67	3	4	34	51	3	4	27	40	78
Wollongong Hospital	11	0	0	3	27	0	0	8	73	21
<b>Australian Capital Territory</b>	<b>37</b>	<b>1</b>	<b>3</b>	<b>10</b>	<b>27</b>	<b>2</b>	<b>5</b>	<b>24</b>	<b>65</b>	<b>30</b>
Access Nephrology	2	0	0	0	0	0	0	2	100	5
Canberra Hospital	35	1	3	10	29	2	6	22	63	26
<b>Victoria</b>	<b>384</b>	<b>9</b>	<b>2</b>	<b>114</b>	<b>30</b>	<b>4</b>	<b>1</b>	<b>257</b>	<b>67</b>	<b>428</b>
Alfred Hospital	36	0	0	12	33	0	0	24	67	34
Austin Hospital	23	2	9	3	13	0	0	18	78	40
Bendigo Hospital	12	0	0	7	58	0	0	5	42	14
Eastern Health Integrated Renal Services	8	0	0	1	12	0	0	7	88	27
Epworth Eastern Hospital	6	0	0	0	0	0	0	6	100	6
Epworth Richmond Hospital	8	0	0	0	0	0	0	8	100	6
Forest Hill Dialysis Centre	1	0	0	0	0	0	0	1	100	2
Malvern Dialysis Centre	8	0	0	0	0	1	12	7	88	6
Monash Medical Centre	96	4	4	31	32	3	3	58	60	86
Northern Health Service Melbourne	29	0	0	6	21	0	0	23	79	26
South Eastern Private Hospital Dialysis Centre	2	0	0	0	0	0	0	2	100	2
St Vincent's Hospital Melbourne	25	1	4	16	64	0	0	8	32	36
Sunshine Private Dialysis Centre Fresenius	1	0	0	0	0	0	0	1	100	0
The Royal Melbourne Hospital	58	1	2	21	36	0	0	36	62	62
University Hospital Geelong Barwon Health	20	0	0	7	35	0	0	13	65	30
Western Health Service	51	1	2	10	20	0	0	40	78	48
<b>Tasmania</b>	<b>26</b>	<b>1</b>	<b>4</b>	<b>5</b>	<b>19</b>	<b>1</b>	<b>4</b>	<b>19</b>	<b>73</b>	<b>24</b>
Launceston General Hospital	12	1	8	2	17	0	0	9	75	14
Royal Hobart Hospital	14	0	0	3	21	1	7	10	71	10

continued on next page

continued from previous page

Centre	N KRT	N TX	% TX	N PD	% PD	N HHD*	% HHD*	N FacHD	% FacHD	Half-yearly Average of 2023 N KRT
<b>South Australia</b>	<b>102</b>	<b>6</b>	<b>6</b>	<b>24</b>	<b>24</b>	<b>2</b>	<b>2</b>	<b>70</b>	<b>69</b>	<b>122</b>
Central Northern Adelaide Renal Service	83	6	7	16	19	2	2	59	71	94
Flinders Medical Centre	19	0	0	8	42	0	0	11	58	28
<b>Northern Territory</b>	<b>62</b>	<b>1</b>	<b>2</b>	<b>7</b>	<b>11</b>	<b>0</b>	<b>0</b>	<b>54</b>	<b>87</b>	<b>68</b>
Alice Springs Hospital	25	1	4	0	0	0	0	24	96	28
Royal Darwin Hospital	37	0	0	7	19	0	0	30	81	40
<b>Western Australia</b>	<b>191</b>	<b>4</b>	<b>2</b>	<b>58</b>	<b>30</b>	<b>3</b>	<b>2</b>	<b>126</b>	<b>66</b>	<b>192</b>
Fiona Stanley Hospital	69	1	1	21	30	2	3	45	65	72
Royal Perth Hospital	65	1	2	18	28	0	0	46	71	64
Sir Charles Gairdner Hospital	57	2	4	19	33	1	2	35	61	56
<b>New Zealand</b>	<b>296</b>	<b>16</b>	<b>5</b>	<b>82</b>	<b>28</b>	<b>6</b>	<b>2</b>	<b>192</b>	<b>65</b>	<b>360</b>
Auckland City Hospital	33	0	0	9	27	1	3	23	70	36
Christchurch Hospital	19	3	16	11	58	0	0	5	26	27
Dunedin Hospital	8	1	12	3	38	0	0	4	50	10
Hawkes Bay Hospital	6	0	0	3	50	0	0	3	50	14
Middlemore Hospital	79	3	4	21	27	4	5	51	65	89
Palmerston North Hospital	4	0	0	0	0	0	0	4	100	18
Taranaki Hospital	3	1	33	0	0	0	0	2	67	8
Waikato Hospital	74	2	3	22	30	1	1	49	66	74
Waitemata Renal Service	27	3	11	2	7	0	0	22	81	30
Wellington Regional Hospital	24	3	12	7	29	0	0	14	58	36
Whangarei Hospital	19	0	0	4	21	0	0	15	79	14

### 5.1.2 Paediatric

This table presents the numbers (N) of incident kidney replacement therapy (KRT) patients during the observation window by modality at commencement and centre. Modality is categorised as pre-emptive kidney transplant (TX), peritoneal dialysis (PD), home haemodialysis (including commencing training) and community house haemodialysis (HHD\*) and facility haemodialysis (FacHD). Also presented are the percentages (%) of each modality out of the total incident KRT cohort. The half-yearly average number of incident patients for 2023 from the analysis database is also provided to allow assessment of possible under-reporting. Patients are included in this paediatric report if they were treated at a paediatric hospital. In rare cases when patients younger than 18 years are treated at an adult centre, they are included in the adult report. Any patients 18 years and older treated at a paediatric hospital are included in this report.

Centre	N KRT	N TX	% TX	N PD	% PD	N HHD*	% HHD*	N FacHD	% FacHD	Half-yearly Average of 2023 N KRT
<b>Australia</b>	<b>9</b>	<b>0</b>	<b>0</b>	<b>7</b>	<b>78</b>	<b>0</b>	<b>0</b>	<b>2</b>	<b>22</b>	<b>16</b>
<b>Queensland</b> Child and Adolescent Renal Service	<b>6</b> 6	<b>0</b> 0	<b>0</b> 0	<b>5</b> 5	<b>83</b> 83	<b>0</b> 0	<b>0</b> 0	<b>1</b> 1	<b>17</b> 17	<b>4</b> 4
<b>New South Wales</b> Sydney Children's Hospital	<b>1</b> 1	<b>0</b> 0	<b>0</b> 0	<b>1</b> 1	<b>100</b> 100	<b>0</b> 0	<b>0</b> 0	<b>0</b> 0	<b>0</b> 0	<b>4</b> 1
<b>Victoria</b> Royal Children's Hospital	<b>1</b> 1	<b>0</b> 0	<b>0</b> 0	<b>0</b> 0	<b>0</b> 0	<b>0</b> 0	<b>0</b> 0	<b>1</b> 1	<b>100</b> 100	<b>6</b> 4
<b>South Australia</b> Women's and Children's Hospital	<b>1</b> 1	<b>0</b> 0	<b>0</b> 0	<b>1</b> 1	<b>100</b> 100	<b>0</b> 0	<b>0</b> 0	<b>0</b> 0	<b>0</b> 0	<b>1</b> 1
<b>New Zealand</b> Starship Children's Hospital	<b>2</b> 2	<b>0</b> 0	<b>0</b> 0	<b>2</b> 2	<b>100</b> 100	<b>0</b> 0	<b>0</b> 0	<b>0</b> 0	<b>0</b> 0	<b>2</b> 2

## 5.2 Prevalent Modality

### 5.2.1 Adult

This table presents the numbers (N) of prevalent kidney replacement therapy (KRT) patients at the end of the observation window by modality and centre. Modality is categorised as functioning kidney transplant (TX), peritoneal dialysis (PD), hybrid peritoneal dialysis and haemodialysis (Hybrid), home haemodialysis including community house haemodialysis (HHD\*) and facility haemodialysis (FacHD). Also presented are the percentages (%) of each modality out of the total prevalent KRT cohort. The number of prevalent patients for 31 Dec 2023 from the analysis database is also provided to allow assessment of possible under-reporting. Patients are excluded from this adult report if they were treated at a paediatric hospital. In rare cases when patients younger than 18 years are treated at an adult centre, they are included in this adult report. Any patients 18 years and older treated at a paediatric hospital are excluded from this report.

Centre	N KRT	N TX	% TX	N PD	% PD	N Hybrid	% Hybrid	N HHD*	% HHD*	N FacHD	% FacHD	2023 N KRT
<b>Australia</b>	<b>29273</b>	<b>13615</b>	<b>47</b>	<b>2666</b>	<b>9</b>	<b>21</b>	<b>0</b>	<b>1043</b>	<b>4</b>	<b>11928</b>	<b>41</b>	<b>28947</b>
<b>Queensland</b>	<b>5776</b>	<b>2574</b>	<b>45</b>	<b>475</b>	<b>8</b>	<b>4</b>	<b>0</b>	<b>212</b>	<b>4</b>	<b>2511</b>	<b>43</b>	<b>5746</b>
Bundaberg Hospital	145	62	43	13	9	0	0	4	3	66	46	140
Cairns Hospital	456	129	28	29	6	2	0	32	7	264	58	475
Cairns Private Hospital	22	0	0	0	0	0	0	0	0	22	100	23
Chermside Dialysis Centre	66	28	42	0	0	0	0	0	0	38	58	67
Gold Coast Private Hospital	33	0	0	0	0	0	0	0	0	33	100	41
Gold Coast University Hospital	490	254	52	44	9	0	0	28	6	164	33	475
Henry Dalziel Dialysis Clinic - Greenslopes	219	111	51	0	0	0	0	0	0	108	49	221
Hervey Bay Hospital	124	39	31	17	14	0	0	2	2	66	53	125
Ipswich Hospital	133	11	8	22	17	0	0	1	1	99	74	120
John Flynn Private Hospital	108	78	72	0	0	0	0	0	0	30	28	109
Mackay Base Hospital	169	62	37	15	9	0	0	0	0	92	54	173
Mater Hospital, Brisbane	147	68	46	0	0	0	0	0	0	79	54	143
Mater Hospital, Townsville	32	0	0	0	0	0	0	0	0	32	100	34
Metro South Kidney and Transplant Services	541	0	0	156	29	0	0	68	13	317	59	531
Logan Hospital	186	0	0	70	38	0	0	0	0	116	62	0
Princess Alexandra Hospital	302	0	0	86	28	0	0	68	23	148	49	531
Redlands Hospital	53	0	0	0	0	0	0	0	0	53	100	0
Morayfield B.Braun Renal Care Centre	13	0	0	0	0	0	0	0	0	13	100	7
Mount Isa Base Hospital	55	9	16	0	0	0	0	0	0	46	84	57
Nambour Selangor Private Hospital	14	0	0	0	0	0	0	0	0	14	100	11
North Lakes Dialysis Centre	36	0	0	0	0	0	0	0	0	36	100	38
Pindara Renal Unit	20	0	0	0	0	0	0	0	0	20	100	23

continued on next page



continued from previous page

Centre	N KRT	N TX	% TX	N PD	% PD	N Hybrid	% Hybrid	N HHD*	% HHD*	N FacHD	% FacHD	2023 N KRT
Queensland Kidney Transplant Service	790	789	100	0	0	0	0	0	0	1	0	795
Rockhampton Hospital	174	78	45	11	6	0	0	2	1	83	48	169
Royal Brisbane and Women's Hospital	599	236	39	79	13	1	0	33	6	250	42	589
St Andrew's Ipswich Private Hospital	44	6	14	0	0	0	0	0	0	38	86	43
St Andrew's Toowoomba B.Braun'S Dialysis Clinic	24	0	0	0	0	0	0	0	0	24	100	21
Sunshine Coast University Hospital	402	239	59	11	3	0	0	14	3	138	34	412
Sunshine Coast University Private Hospital	30	0	0	0	0	0	0	0	0	30	100	30
The Wesley Hospital Brisbane	186	124	67	0	0	0	0	0	0	62	33	184
Toowoomba Hospital	268	116	43	34	13	0	0	18	7	100	37	268
Torres & Cape Kidney Health	60	18	30	0	0	0	0	0	0	42	70	61
Townsville University Hospital	376	117	31	44	12	1	0	10	3	204	54	361
<b>New South Wales</b>	<b>8278</b>	<b>3776</b>	<b>46</b>	<b>983</b>	<b>12</b>	<b>4</b>	<b>0</b>	<b>396</b>	<b>5</b>	<b>3119</b>	<b>38</b>	<b>8263</b>
Bathurst Base Hospital	30	11	37	0	0	0	0	0	0	19	63	33
Coffs Harbour Hospital	137	64	47	4	3	0	0	3	2	66	48	137
Concord Repatriation General Hospital	293	116	40	37	13	0	0	14	5	126	43	281
Dubbo Base Hospital	143	61	43	8	6	0	0	4	3	70	49	134
Gosford Hospital	313	121	39	19	6	0	0	8	3	165	53	308
Gregory Hills B.Braun Renal Care Centre	37	0	0	0	0	0	0	0	0	37	100	39
John Hunter Hospital	639	364	57	63	10	0	0	28	4	184	29	635
Lismore Base Hospital	192	93	48	17	9	0	0	16	8	66	34	192
Liverpool Private Dialysis Centre	22	0	0	0	0	0	0	0	0	22	100	28
Manning Rural Hospital	77	15	19	15	19	1	1	2	3	44	57	74
Mater Hospital, North Sydney	75	35	47	0	0	0	0	0	0	40	53	75
Mayo Private Hospital	17	0	0	0	0	0	0	0	0	17	100	18
Nepean Hospital	335	136	41	44	13	0	0	4	1	151	45	325
Newcastle Dialysis Centre	41	1	2	0	0	0	0	0	0	40	98	44
Orange Health Service	112	43	38	9	8	0	0	2	2	58	52	107
Port Macquarie Base Hospital	113	43	38	6	5	0	0	2	2	62	55	113
Port Macquarie Private Hospital	10	0	0	0	0	0	0	0	0	10	100	10
Royal North Shore Hospital	709	365	51	67	9	0	0	44	6	233	33	695
Royal Prince Alfred Hospital	646	435	67	35	5	0	0	43	7	133	21	652
South West Sydney Renal Service	1135	434	38	200	18	0	0	74	7	427	38	1149
St George Hospital	477	250	52	37	8	0	0	23	5	167	35	490

continued on next page

continued from previous page

Centre	N KRT	N TX	% TX	N PD	% PD	N Hybrid	% Hybrid	N HHD*	% HHD*	N FacHD	% FacHD	2023 N KRT
St Vincent's Hospital Sydney	216	110	51	18	8	0	0	21	10	67	31	231
St Vincent's Lismore Private Dialysis Centre	16	0	0	0	0	0	0	0	0	16	100	19
Sydney Adventist Hospital	49	0	0	1	2	0	0	0	0	48	98	48
Tamworth Hospital	162	61	38	14	9	0	0	3	2	84	52	171
The Prince of Wales Hospital	285	175	61	26	9	0	0	6	2	78	27	280
Tweed Valley Hospital	78	14	18	9	12	0	0	0	0	55	71	85
Wagga Wagga Base Hospital	175	48	27	11	6	3	2	8	5	105	60	173
Westmead Hospital	1345	605	45	290	22	0	0	81	6	369	27	1312
Wollongong Hospital	399	176	44	53	13	0	0	10	3	160	40	405
<b>Australian Capital Territory</b>	<b>637</b>	<b>298</b>	<b>47</b>	<b>48</b>	<b>8</b>	<b>1</b>	<b>0</b>	<b>22</b>	<b>3</b>	<b>268</b>	<b>42</b>	<b>616</b>
Access Nephrology	95	70	74	0	0	0	0	0	0	25	26	98
Canberra Hospital	542	228	42	48	9	1	0	22	4	243	45	518
<b>Victoria</b>	<b>7677</b>	<b>3977</b>	<b>52</b>	<b>634</b>	<b>8</b>	<b>4</b>	<b>0</b>	<b>233</b>	<b>3</b>	<b>2829</b>	<b>37</b>	<b>7540</b>
Alfred Hospital	571	288	50	77	13	0	0	8	1	198	35	563
Austin Hospital	744	479	64	27	4	1	0	30	4	207	28	738
Bendigo Hospital	155	28	18	44	28	0	0	0	0	83	54	151
Diamond Valley B.Braun Renal Care Centre	38	0	0	0	0	0	0	0	0	38	100	38
Eastern Health Integrated Renal Services	440	204	46	33	8	0	0	12	3	191	43	452
Epworth Eastern Hospital	51	0	0	0	0	0	0	0	0	51	100	49
Epworth Geelong Hospital	21	0	0	0	0	0	0	0	0	21	100	22
Epworth Richmond Hospital	40	0	0	0	0	0	0	0	0	40	100	39
Forest Hill Dialysis Centre	42	0	0	0	0	0	0	0	0	42	100	44
Malvern Dialysis Centre	59	0	0	0	0	0	0	1	2	58	98	65
Monash Medical Centre	1837	1084	59	138	8	0	0	74	4	541	29	1790
North Melbourne B.Braun Renal Care Centre	23	0	0	0	0	0	0	0	0	23	100	24
Northern Health Service Melbourne	284	63	22	37	13	0	0	10	4	174	61	272
South Eastern Private Hospital Dialysis Centre	35	0	0	0	0	0	0	0	0	35	100	25
St Vincent's Hospital Melbourne	597	286	48	77	13	0	0	10	2	224	38	591
Sunshine Private Dialysis Centre Fresenius	31	0	0	0	0	0	0	0	0	31	100	30
The Royal Melbourne Hospital	1799	1211	67	93	5	0	0	37	2	458	25	1778
University Hospital Geelong Barwon Health	358	190	53	26	7	0	0	29	8	113	32	351
Western Health Service	552	144	26	82	15	3	1	22	4	301	55	518

continued on next page

continued from previous page

Centre	N KRT	N TX	% TX	N PD	% PD	N Hybrid	% Hybrid	N HHD*	% HHD*	N FacHD	% FacHD	2023 N KRT
<b>Tasmania</b>	<b>557</b>	<b>327</b>	<b>59</b>	<b>45</b>	<b>8</b>	<b>0</b>	<b>0</b>	<b>7</b>	<b>1</b>	<b>178</b>	<b>32</b>	<b>563</b>
Launceston General Hospital	297	160	54	33	11	0	0	6	2	98	33	305
Royal Hobart Hospital	260	167	64	12	5	0	0	1	0	80	31	258
<b>South Australia</b>	<b>2228</b>	<b>1156</b>	<b>52</b>	<b>167</b>	<b>7</b>	<b>8</b>	<b>0</b>	<b>35</b>	<b>2</b>	<b>862</b>	<b>39</b>	<b>2214</b>
Central Northern Adelaide Renal Service	1736	896	52	125	7	7	0	34	2	674	39	1726
Flinders Medical Centre	492	260	53	42	9	1	0	1	0	188	38	488
<b>Northern Territory</b>	<b>978</b>	<b>165</b>	<b>17</b>	<b>47</b>	<b>5</b>	<b>0</b>	<b>0</b>	<b>35</b>	<b>4</b>	<b>731</b>	<b>75</b>	<b>958</b>
Alice Springs Hospital	472	65	14	5	1	0	0	3	1	399	85	468
Royal Darwin Hospital	506	100	20	42	8	0	0	32	6	332	66	490
<b>Western Australia</b>	<b>3142</b>	<b>1342</b>	<b>43</b>	<b>267</b>	<b>8</b>	<b>0</b>	<b>0</b>	<b>103</b>	<b>3</b>	<b>1430</b>	<b>46</b>	<b>3047</b>
Fiona Stanley Hospital	1216	553	45	88	7	0	0	42	3	533	44	1167
Royal Perth Hospital	917	279	30	71	8	0	0	33	4	534	58	882
Sir Charles Gairdner Hospital	1009	510	51	108	11	0	0	28	3	363	36	998
<b>New Zealand</b>	<b>5638</b>	<b>2375</b>	<b>42</b>	<b>757</b>	<b>13</b>	<b>4</b>	<b>0</b>	<b>378</b>	<b>7</b>	<b>2124</b>	<b>38</b>	<b>5514</b>
Auckland City Hospital	665	270	41	39	6	0	0	54	8	302	45	647
Bay of Plenty Renal Unit	229	95	41	53	23	0	0	0	0	81	35	226
Christchurch Hospital	518	359	69	71	14	0	0	18	3	70	14	501
Dunedin Hospital	219	137	63	28	13	1	0	30	14	23	11	230
Hawkes Bay Hospital	189	90	48	22	12	0	0	8	4	69	37	185
Middlemore Hospital	1120	288	26	160	14	0	0	90	8	582	52	1088
Palmerston North Hospital	291	105	36	33	11	3	1	27	9	123	42	296
Taranaki Hospital	112	59	53	14	12	0	0	5	4	34	30	112
Waikato Hospital	739	241	33	169	23	0	0	70	9	259	35	693
Waitemata Renal Service	614	278	45	39	6	0	0	36	6	261	43	608
Wellington Regional Hospital	666	339	51	102	15	0	0	24	4	201	30	656
Whangarei Hospital	276	114	41	27	10	0	0	16	6	119	43	272

### 5.2.2 Paediatric

This table presents the numbers (N) of prevalent kidney replacement therapy (KRT) patients at the end of the observation window by modality and centre. Modality is categorised as functioning kidney transplant (TX), peritoneal dialysis (PD), hybrid peritoneal dialysis and haemodialysis (Hybrid), home haemodialysis including community house haemodialysis (HHD\*) and facility haemodialysis (FacHD). Also presented are the percentages (%) of each modality out of the total prevalent KRT cohort. The number of prevalent patients for 31 Dec 2023 from the analysis database is also provided to allow assessment of possible under-reporting. Patients are included in this paediatric report if they were treated at a paediatric hospital. In rare cases when patients younger than 18 years are treated at an adult centre, they are included in the adult report. Any patients 18 years and older treated at a paediatric hospital are included in this report.

Centre	N KRT	N TX	% TX	N PD	% PD	N Hybrid	% Hybrid	N HHD*	% HHD*	N FacHD	% FacHD	2023 N KRT
<b>Australia</b>	<b>325</b>	<b>272</b>	<b>84</b>	<b>41</b>	<b>13</b>	<b>1</b>	<b>0</b>	<b>0</b>	<b>0</b>	<b>11</b>	<b>3</b>	<b>324</b>
<b>Queensland</b>	<b>85</b>	<b>67</b>	<b>79</b>	<b>16</b>	<b>19</b>	<b>0</b>	<b>0</b>	<b>0</b>	<b>0</b>	<b>2</b>	<b>2</b>	<b>80</b>
Child and Adolescent Renal Service	85	67	79	16	19	0	0	0	0	2	2	80
<b>New South Wales</b>	<b>102</b>	<b>96</b>	<b>94</b>	<b>5</b>	<b>5</b>	<b>0</b>	<b>0</b>	<b>0</b>	<b>0</b>	<b>1</b>	<b>1</b>	<b>100</b>
Sydney Children's Hospital	24	20	83	3	12	0	0	0	0	1	4	24
The Children's Hospital at Westmead	78	76	97	2	3	0	0	0	0	0	0	76
<b>Victoria</b>	<b>95</b>	<b>76</b>	<b>80</b>	<b>12</b>	<b>13</b>	<b>1</b>	<b>1</b>	<b>0</b>	<b>0</b>	<b>6</b>	<b>6</b>	<b>97</b>
Monash Children's Centre	26	17	65	3	12	1	4	0	0	5	19	26
Royal Children's Hospital	69	59	86	9	13	0	0	0	0	1	1	71
<b>South Australia</b>	<b>17</b>	<b>13</b>	<b>76</b>	<b>4</b>	<b>24</b>	<b>0</b>	<b>0</b>	<b>0</b>	<b>0</b>	<b>0</b>	<b>0</b>	<b>18</b>
Women's and Children's Hospital	17	13	76	4	24	0	0	0	0	0	0	18
<b>Western Australia</b>	<b>26</b>	<b>20</b>	<b>77</b>	<b>4</b>	<b>15</b>	<b>0</b>	<b>0</b>	<b>0</b>	<b>0</b>	<b>2</b>	<b>8</b>	<b>29</b>
Perth Children's Hospital	26	20	77	4	15	0	0	0	0	2	8	29
<b>New Zealand</b>	<b>58</b>	<b>49</b>	<b>84</b>	<b>7</b>	<b>12</b>	<b>0</b>	<b>0</b>	<b>0</b>	<b>0</b>	<b>2</b>	<b>3</b>	<b>58</b>
Starship Children's Hospital	58	49	84	7	12	0	0	0	0	2	3	58