



The Australia and New Zealand Dialysis and Transplant Registry (ANZDATA) records the incidence, prevalence and outcomes of dialysis and transplant treatment for patients with end-stage kidney disease

COLLECTS

- Data on chronic dialysis and transplantation
- Indicators of clinical process
- Outcome Data

REPORTS

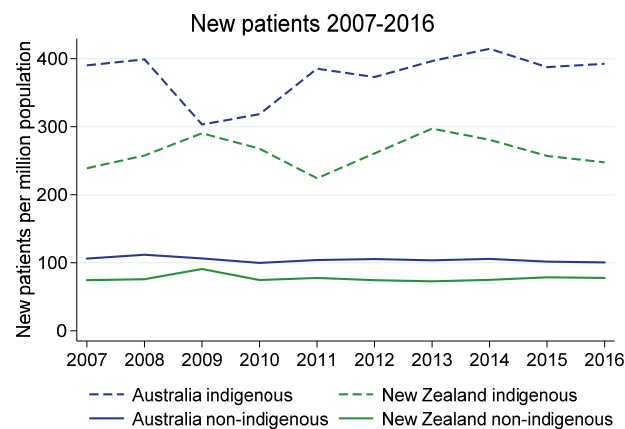
- Outcome of treatment
- Individual Hospital activity
- Australian and New Zealand data

PROVIDES

For widespread use of its data for Quality Assurance, Audits, Surveys, Service Planning and Research Projects

INTRODUCTION

This brochure provides an introduction to ANZDATA and includes data collected to the end of 2016 and reported in the 2017 Annual Report. The ANZDATA Registry collects information on renal replacement therapy (dialysis and transplantation) for end-stage kidney disease in Australia and New Zealand. Much more information can be found at our website, including our Annual Report, data forms and dictionaries, list of publications and guidelines for requesting data.



NEW PATIENTS

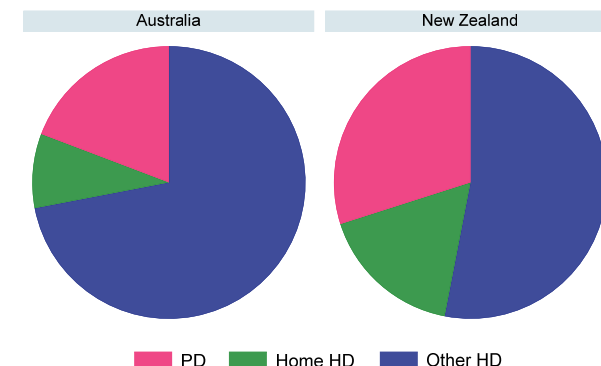
There were 2823 patients who commenced treatment for end-stage kidney disease in Australia in 2016, a rate of 117 per million population. In New Zealand, the number of new patients commencing renal replacement treatment was 559, a rate of 119 per million of population. Rates of treated end-stage kidney disease are substantially higher in Indigenous than non-Indigenous populations in both Australia and New Zealand.

PREVALENT PATIENTS

Australia Total	23,840 (988)
No. Functioning Transplants	11,134 (461)
No. Dialysis Patients	12,706 (527)
<i>Proportion Home Haemodialysis</i>	9%
<i>Proportion Facility Haemodialysis</i>	72%
<i>Proportion Peritoneal Dialysis</i>	19%
New Zealand Total	4,532 (966)
No. Functioning Transplants	1,782 (38)
No. Dialysis Patients	2,750 (586)
<i>Proportion Home Haemodialysis</i>	17%
<i>Proportion Facility Haemodialysis</i>	53%
<i>Proportion Peritoneal Dialysis</i>	30%

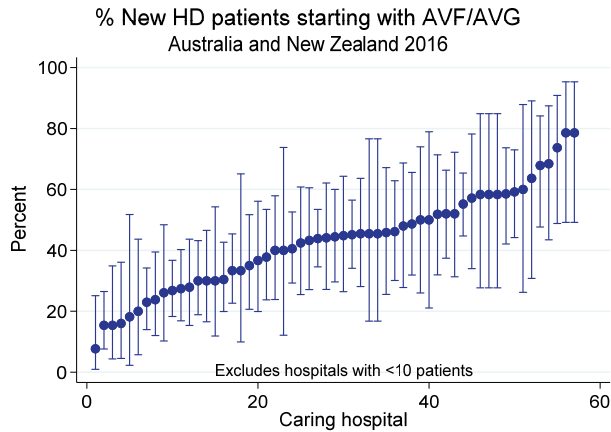
At the end of 2016 there were almost 24,000 patients receiving renal replacement therapy in Australia and around 4,500 in NZ.

Dialysis modality by country
31 December 2016

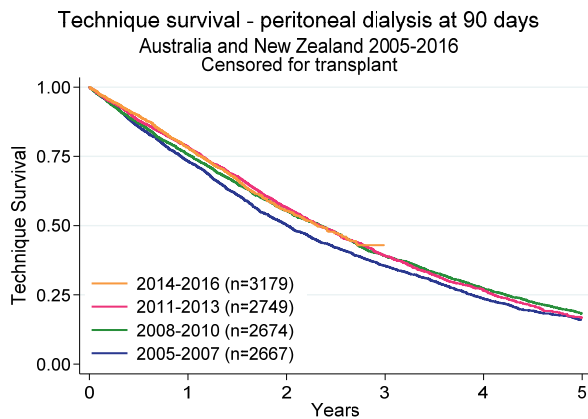


Australia and New Zealand have a strong focus on home dialysis, with 28% of Australian and 47% of New Zealand dialysis patients receiving dialysis at home.

DIALYSIS

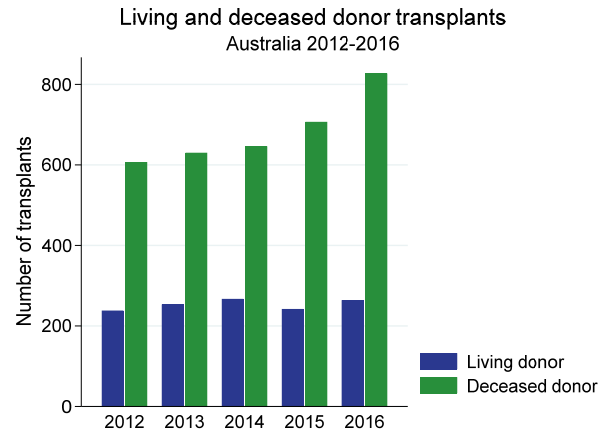


ANZDATA has been reporting real-time and annual “key process indicators” (KPIs) for haemodialysis (HD) and peritoneal dialysis (PD) since 2011. At present for HD we report the proportion of new patients starting HD with a fistula or graft. There is a large variation between treating hospitals.

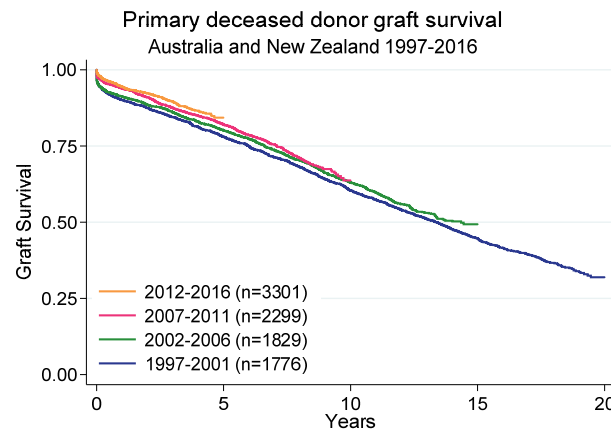


A relatively large proportion of dialysis patients in Australia and New Zealand use PD. The main reasons for technique failure are death, infective complications and inadequate dialysis.

TRANSPLANTATION



The majority of kidney transplants performed in Australia are from deceased donors. In recent years there has been a large increase in the deceased donor rate. The living donor rate has been relatively stable over 2011 to 2016.



Transplant outcomes in Australia and New Zealand are excellent and getting even better over time. In the above graph, graft failure includes both death and loss of function.

PUBLICATIONS

ANZDATA is the source of a large number of scientific and other publications. Some selected recent publications are listed here.

Center Effects and Peritoneal Dialysis Peritonitis Outcomes: Analysis of a National Registry. Htay H et al, Am J Kidney Dis. 2017 Dec 28.

Risk Predictors and Causes of Technique Failure Within the First Year of Peritoneal Dialysis: An Australia and New Zealand Dialysis and Transplant Registry (ANZDATA) Study. See EJ et al, Am J Kidney Dis. 2017 Dec 22.

Fatal Dialysis Vascular Access Hemorrhage. Jose MD et al. Am J Kidney Dis. 2017 Oct; 70(4):570-575

Allen PJ et al. Recurrent glomerulonephritis after kidney transplantation: risk factors and allograft outcomes. Kidney Int. 2017 Jun 7

Mohammadi F. Pregnancy outcomes and impact of pregnancy on graft function in women after kidney transplantation. Clin Transplant. 2017 Aug 14

CONTACT US

ANZDATA Registry
South Australian Health and Medical Research Institute (SAHMRI)
Level 4 South, North Terrace
Adelaide, South Australia
Phone: +61 8 8128 4758
Fax: +61 8 8128 4769
Email: anzdata@anzdata.org.au
Website: www.anzdata.org.au