

## **CHAPTER 16**

# **LONG TERM GRAFT OUTCOME BY EARLY RENAL FUNCTION**

**Graeme R Russ**



## GRAFT OUTCOME ACCORDING TO RENAL FUNCTION AT SIX AND TWELVE MONTHS

Primary cadaveric grafts performed from 1st January 1995 to 31st December 1999 were studied (n=1455). The mean serum creatinine at six and twelve months was 143 and 145  $\mu\text{mol/L}$  respectively. Mean GFR calculated according to the Cockcroft-Gault formula for each interval was 52.4 and 52.5 ml/min.

Graft survival according to the level of renal function at six and twelve months as assessed by serum creatinine and calculated GFR is shown in Figures 16.1-4.

Figure 16.1

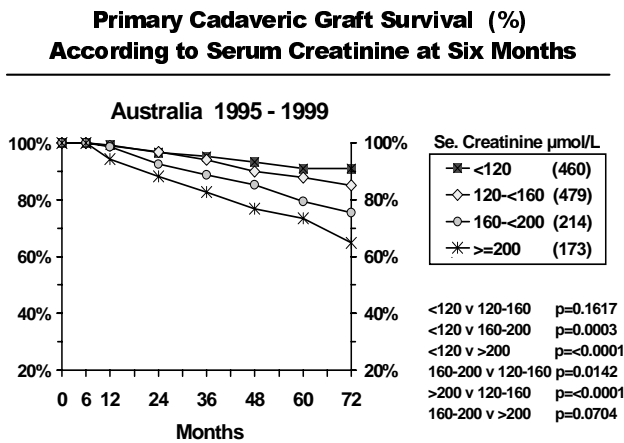


Figure 16.2

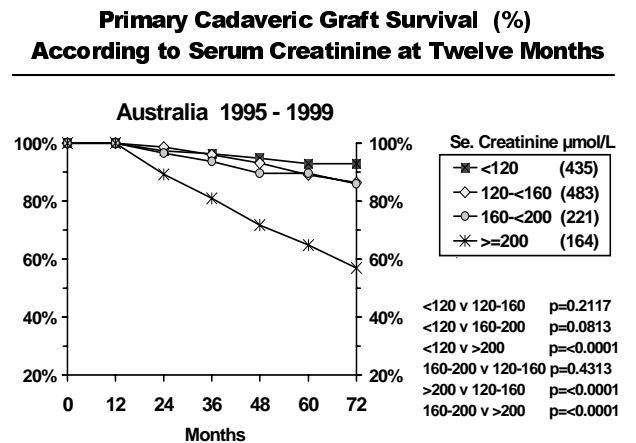


Figure 16.3

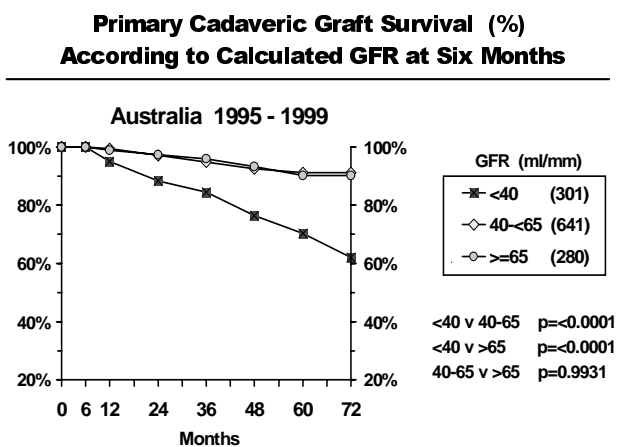


Figure 16.4

